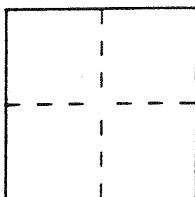


CORNER RECORD

City of LAGUNA BEACH

Document Number _____
County of ORANGE, California

Brief Legal Description _____



CORNER TYPE

Government Corner Control
Meander Property
Rancho Other
Date of Survey AUGUST 1996

COORDINATES (Optional)

N. _____
E. _____
Zone _____ Datum _____
Elev. _____

Corner — Left as found Found and tagged Established Reestablished Rebuilt

Identification and type of corner found: Evidence used to identify or procedure used to establish or reestablish the corner:

TIED OUT EXISTING CENTERLINE MONUMENTS TO BE DESTROYED BY CITY A.C. OVERLAY PROJECT AND RESET WITH A SPIKE AND WASHER "R.C.E. 24668".

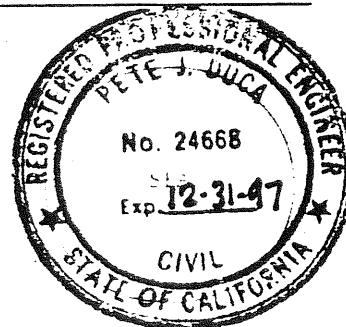
A description of the physical condition of the monument as found and as set or reset: _____

N/A

SURVEYOR'S STATEMENT

This Corner Record was prepared by me or under my direction in conformance with the Land Surveyors' Act on AUGUST 20, 19 96.

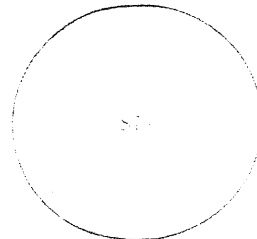
Signed Pete J. Duca R.C.E. Number 24668



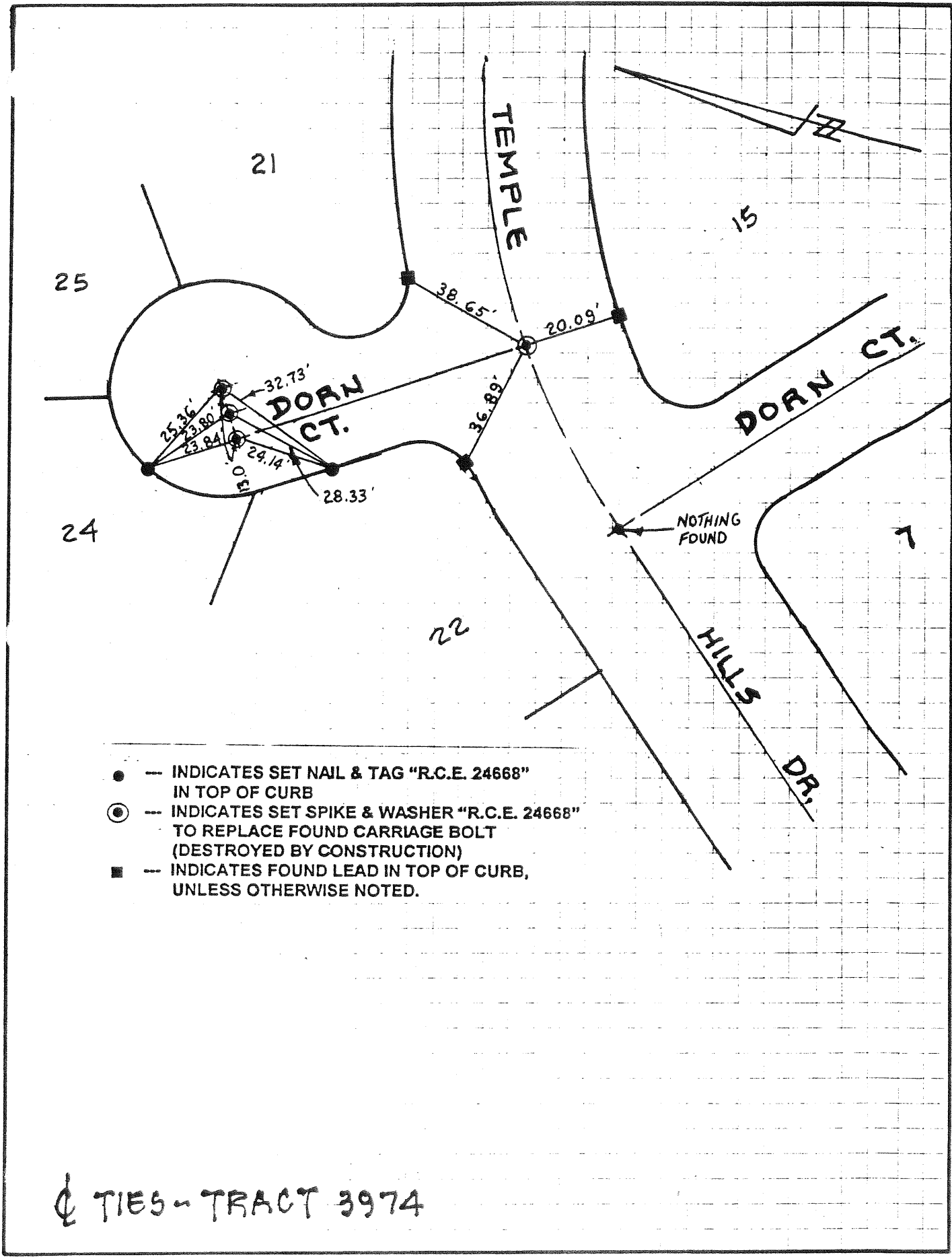
COUNTY SURVEYOR'S STATEMENT

This Corner Record was received _____ 19 ____ and examined and filed _____ 19 ____.

Signed _____ Title _____



County Surveyor's Comment _____



- --- INDICATES SET NAIL & TAG "R.C.E. 24668" IN TOP OF CURB
- ⊙ --- INDICATES SET SPIKE & WASHER "R.C.E. 24668" TO REPLACE FOUND CARRIAGE BOLT (DESTROYED BY CONSTRUCTION)
- --- INDICATES FOUND LEAD IN TOP OF CURB, UNLESS OTHERWISE NOTED.

⊕ TIES - TRACT 3974