

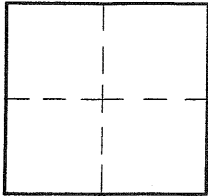
# CORNER RECORD

Document Number 2003-1584 B

City of LAGUNA BEACH

County of ORANGE, California

Brief Legal Description EL TORO ROAD @ RTE. 73



### CORNER TYPE

Govt. Corner  Control   
 Meander  Property   
 Rancho  Other   
 Date of Survey 8-6-03

### COORDINATES (Optional)

N. \_\_\_\_\_  
 E. \_\_\_\_\_  
 Zone \_\_\_\_\_ NAD27  NAD83   
 NAD83 Epoch \_\_\_\_\_  
 Elev. \_\_\_\_\_  
 Vert. Datum: NGVD29  NAVD88   
 Meas. Units: Metric  Imperial

Corner - Left as found  Found & tagged  Established  Reestablished  Rebuilt

Identification and type of corner found: Evidence used to identify or procedure used to establish or reestablish the corner:

FD. NOTHING - RE-ESTABLISHED PER CORNER  
RECORD 2003-984A

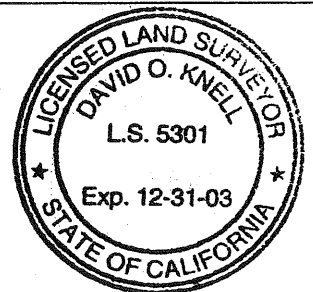
A description of the physical condition of the monument as found and as set or reset:

SEE PAGE 2

### SURVEYOR'S STATEMENT

This Corner Record was prepared by me or under my direction in conformance with the Land Surveyors' Act on AUGUST 6 2003

Signed David O. Knell (P.L.S.) or R.C.E. No. 5301



### COUNTY SURVEYOR'S STATEMENT

This Corner Record was received AUG 18 2003

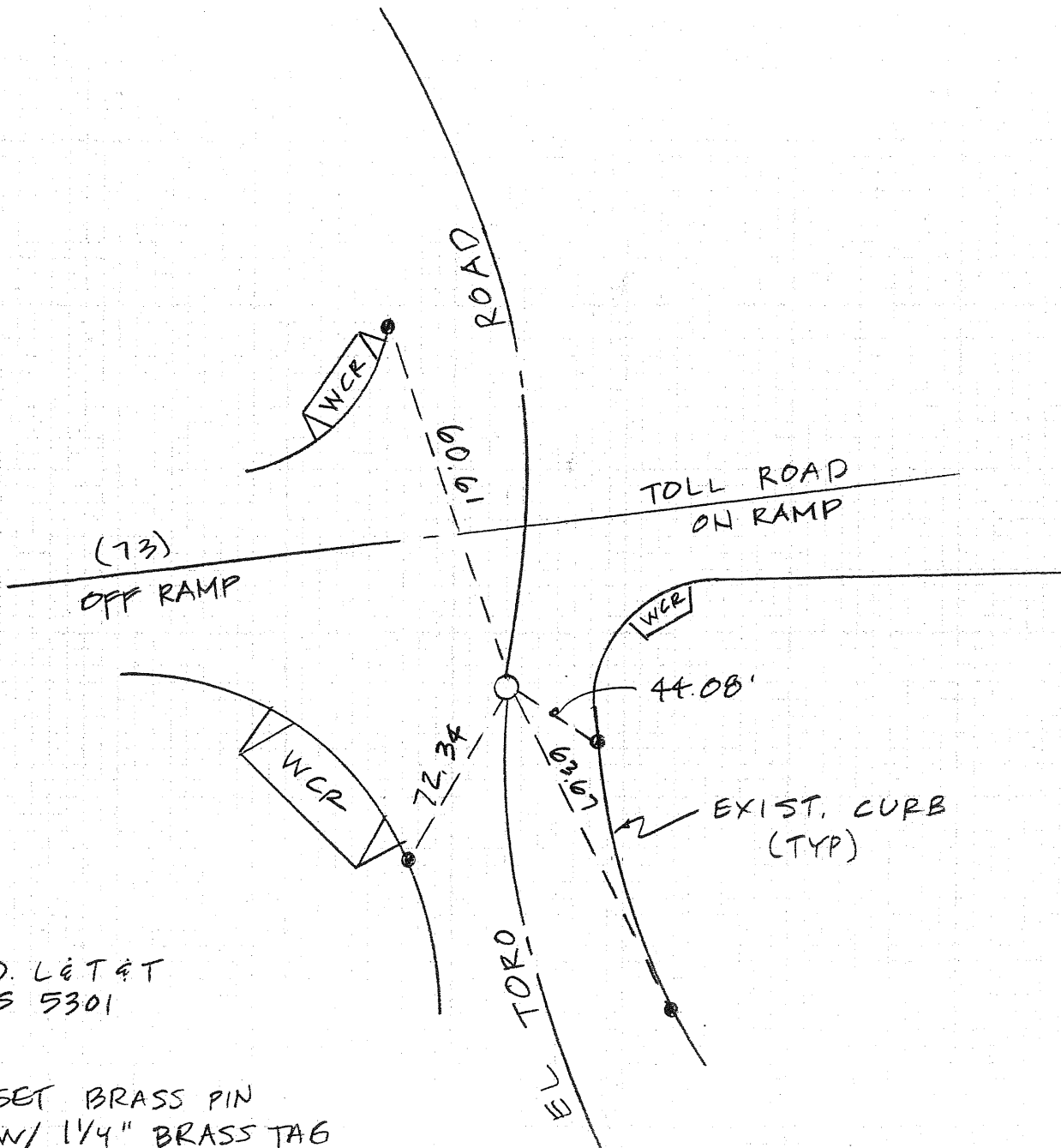
and examined and filed SEP 05 2003

Signed Michael K. Sullivan P.L.S. or R.C.E. No. CS. 6254

Title: DEPUTY COUNTY SURVEYOR



County Surveyor's Comment \_\_\_\_\_



● FD. LET & T  
LS 5301

○ SET BRASS PIN  
W/ 1/4" BRASS TAG  
LS 5301  
IN CONC

WCR - WHEEL CHAIR RAMP