

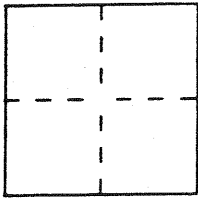
CORNER RECORD

Document Number _____

City of LAGUNA BEACH

County of ORANGE, California

Brief Legal Description _____



CORNER TYPE

COORDINATES (Optional)

Government Corner Control
 Meander Property
 Rancho Other
 Date of Survey AUGUST 1996

N. _____
 E. _____
 Zone _____ Datum _____
 Elev. _____

Corner — Left as found Found and tagged Established Reestablished Rebuilt

Identification and type of corner found: Evidence used to identify or procedure used to establish or reestablish the corner:

TIED OUT EXISTING CENTERLINE MONUMENTS TO BE DESTROYED BY CITY A.C. OVERLAY PROJECT AND RESET WITH A SPIKE AND WASHER "R.C.E. 24668".

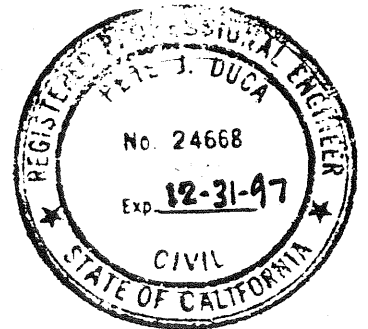
A description of the physical condition of the monument as found and as set or reset: _____

N/A

SURVEYOR'S STATEMENT

This Corner Record was prepared by me or under my direction in conformance with the Land Surveyors' Act on AUGUST 20, 19 96.

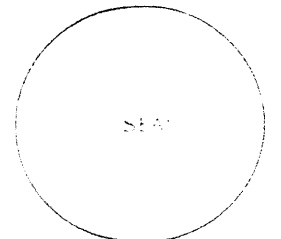
Signed Pete J. Duca ~~is a~~ R.C.E. Number 24668



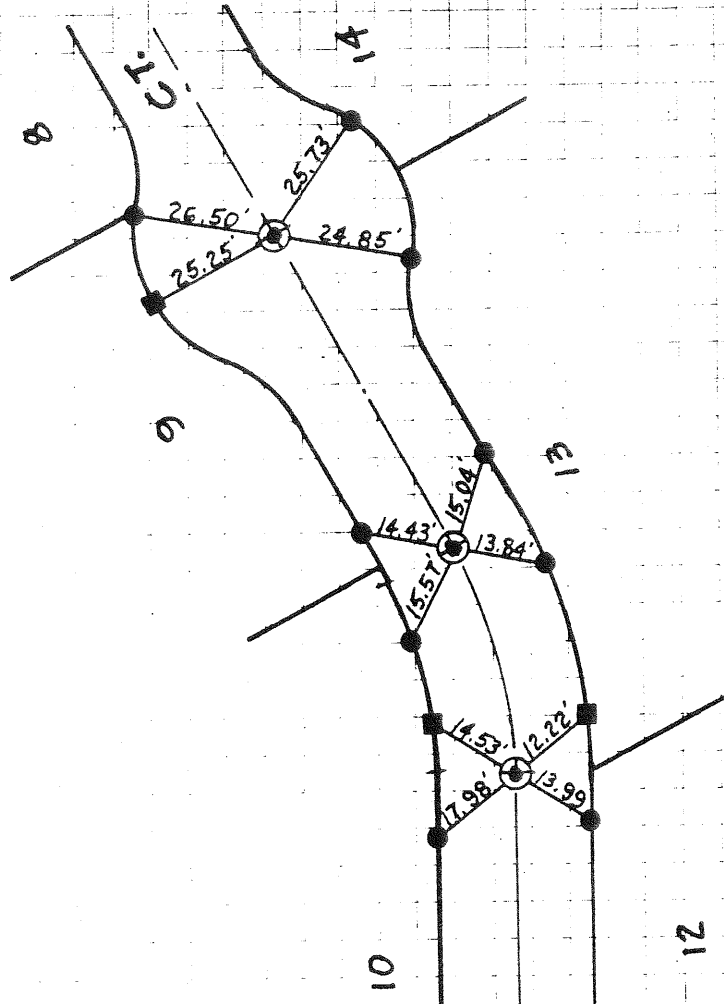
COUNTY SURVEYOR'S STATEMENT

This Corner Record was received _____ 19 ____ and examined and filed _____ 19 ____.

Signed _____ Title _____



County Surveyor's Comment _____



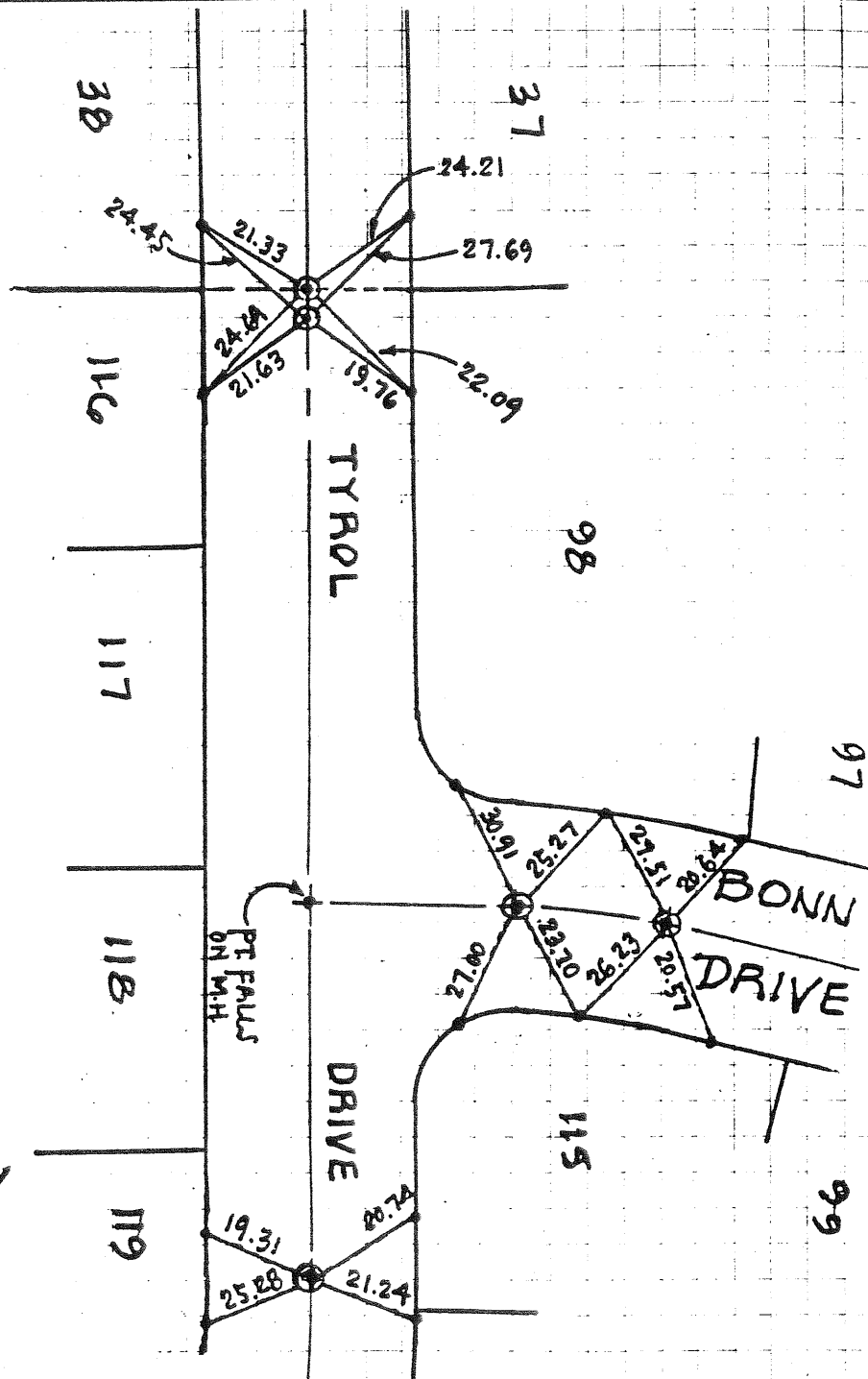
- — INDICATES SET NAIL & TAG "R.C.E. 24668" IN TOP OF CURB
- ⊙ — INDICATES SET SPIKE & WASHER "R.C.E. 24668" TO REPLACE FOUND CARRIAGE BOLT (DESTROYED BY CONSTRUCTION)
- — INDICATES FOUND LEAD IN TOP OF CURB, UNLESS OTHERWISE NOTED.

DORN

TRACT BOUND.

NOTHING FOUND

① TIES-TRACT 1954



- — INDICATES SET NAIL & TAG "R.C.E. 24668" IN TOP OF CURB
- ⊙ — INDICATES SET SPIKE & WASHER "R.C.E. 24668" TO REPLACE FOUND CARRIAGE BOLT (DESTROYED BY CONSTRUCTION)
- — INDICATES FOUND LEAD IN TOP OF CURB, UNLESS OTHERWISE NOTED.

☪ TIES-TRACT 4989