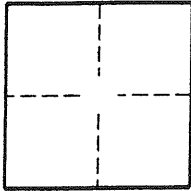


**CORNER RECORD**

Document Number 2002-1930 A

City of LAGUNA BEACH County of ORANGE, California

Brief Legal Description TRACT NO. 3359



**CORNER TYPE**

Government Corner  Control   
Meander  Property   
Rancho  Other   
Date of Survey 9-1-02

**COORDINATES (OPTIONAL)**

N. \_\_\_\_\_  
E. \_\_\_\_\_  
Zone \_\_\_\_\_ NAD27  NAD83   
NAD83 Epoch \_\_\_\_\_  
Elev. \_\_\_\_\_  
Vert. Datum: NGVD29  NAVD88   
Meas. Units: Metric  Imperial

Corner- Left as found  Found and tagged  Established  Reestablished  Rebuilt

Identification and type of corner found: Evidence used to identify or procedure used to establish or reestablish the corner:

FD. S/W TAGGED LS 4653

A description of the physical condition of the monument as found and as set or reset: \_\_\_\_\_

**SURVEYOR'S STATEMENT**

This Corner Record was prepared by me or under my direction in conformance with the Land Surveyors' Act on 9-20-02

Signed Ron Miedema P.L.S. or R.C.E. Number 4653



**COUNTY SURVEYOR'S STATEMENT**

This Corner Record was received FEB 05 2003

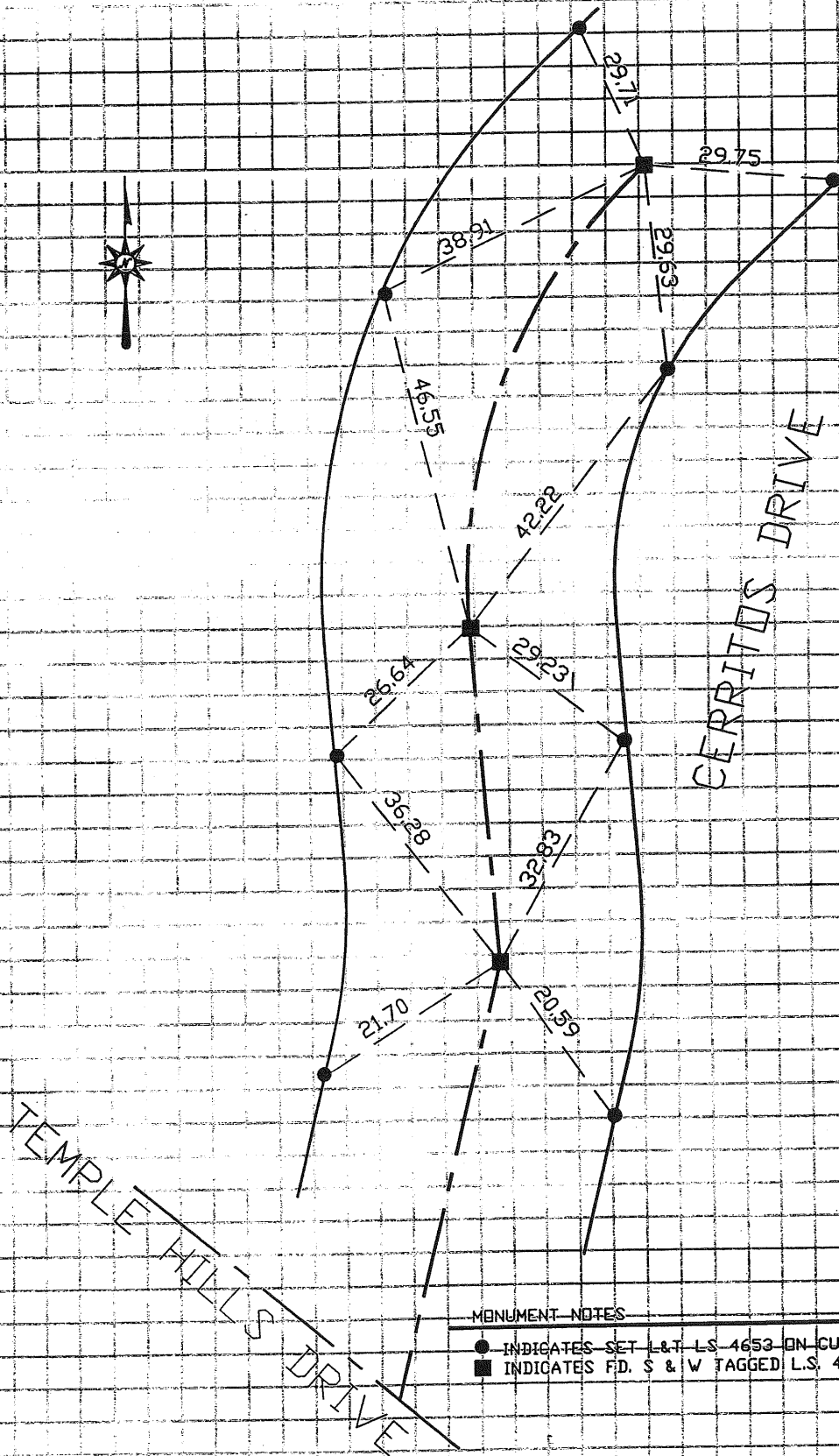
and examined and filed 03-07-03

Signed Michael K. Sullivan P.L.S. or R.C.E. Number LS. 6254

Title DEPUTY COUNTY SURVEYOR



County Surveyor's Comment \_\_\_\_\_



MONUMENT NOTES

- INDICATES SET L&T L.S. 4653 ON CURB.
- INDICATES F.D. S & W TAGGED L.S. 4653, NO REF.