

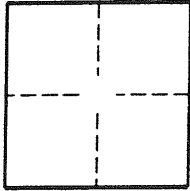
CORNER RECORD

Document Number 2002-1924A

City of LAGUNA BEACH

County of ORANGE, California

Brief Legal Description TRACT NO. 2531 & TRACT NO. 3860



CORNER TYPE

Government Corner Control
Meander Property
Rancho Other
Date of Survey 9-1-02

COORDINATES (OPTIONAL)

N. _____
E. _____
Zone NAD83 NAD27 NAD83
NAD83 Epoch _____
Elev. _____
Vert. Datum: NGVD29 NAVD88
Meas. Units: Metric Imperial

Corner- Left as found Found and tagged Established Reestablished Rebuilt

Identification and type of corner found: Evidence used to identify or procedure used to establish or reestablish the corner:

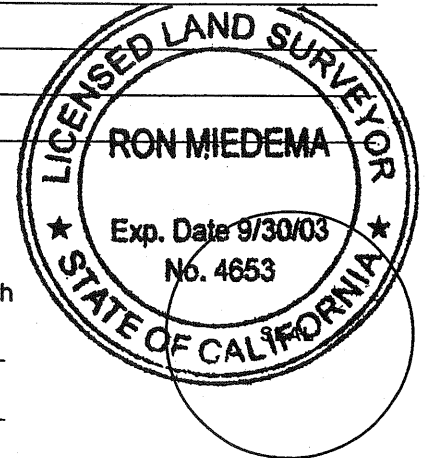
FD. 5' W TAGGED 65 4653

A description of the physical condition of the monument as found and as set or reset:

SURVEYOR'S STATEMENT

This Corner Record was prepared by me or under my direction in conformance with the Land Surveyors' Act on 9-20-02

Signed Ron Miedema P.L.S. or R.C.E. Number 4653



COUNTY SURVEYOR'S STATEMENT

This Corner Record was received FEB 05 2003

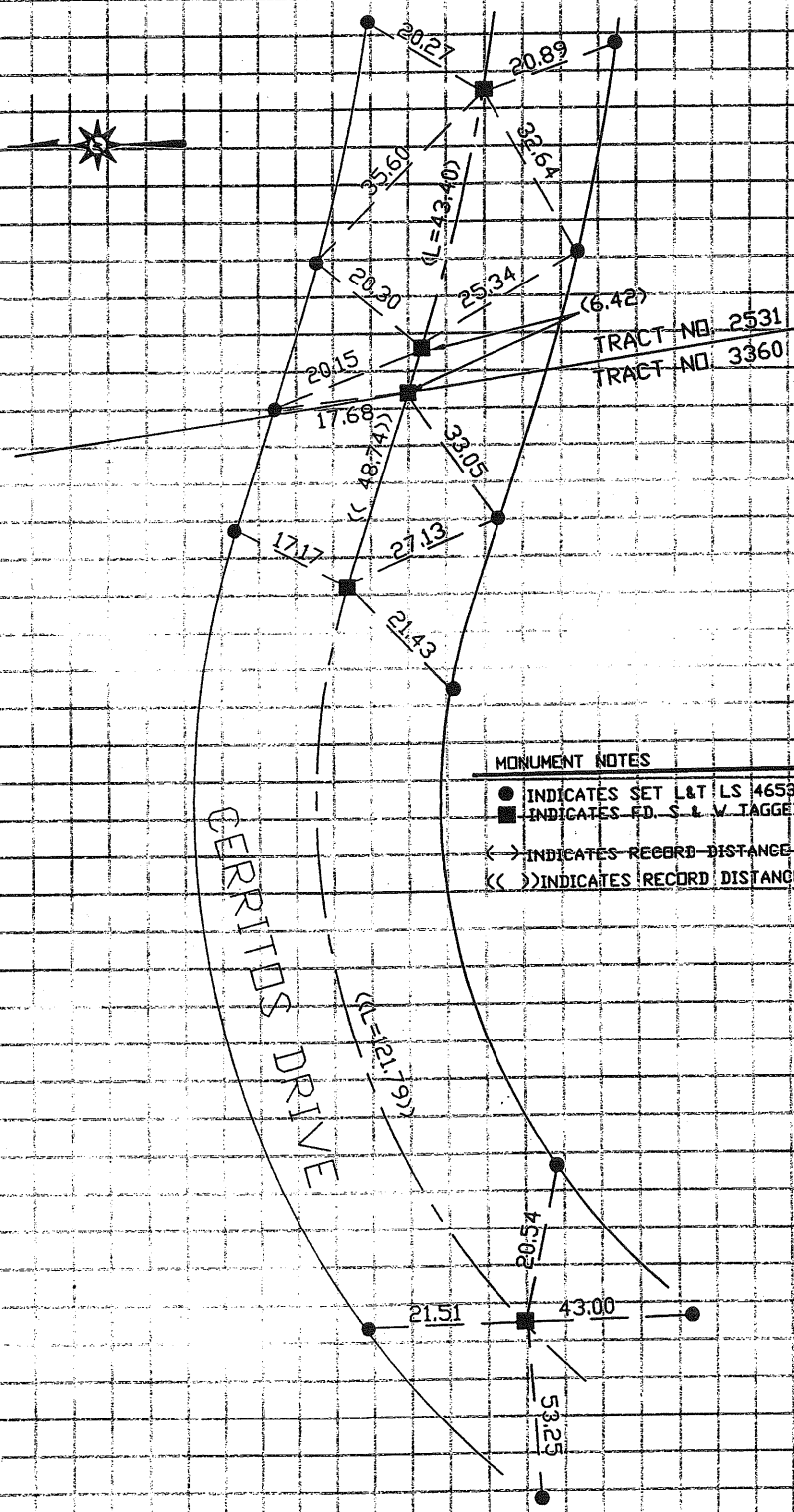
and examined and filed 03-07-03

Signed Michael K. Sullivan P.L.S. or R.C.E. Number LS. 6254

Title DEPUTY COUNTY SURVEYOR



County Surveyor's Comment _____



MONUMENT NOTES

- INDICATES SET L&T ILS 4653 ON CURB.
- INDICATES F.D. S. & V. TAGGED ILS 4653 NO REF.
- < > INDICATES RECORD DISTANCE PER TRACT NO. 2531
- << >> INDICATES RECORD DISTANCE PER TRACT NO. 3360