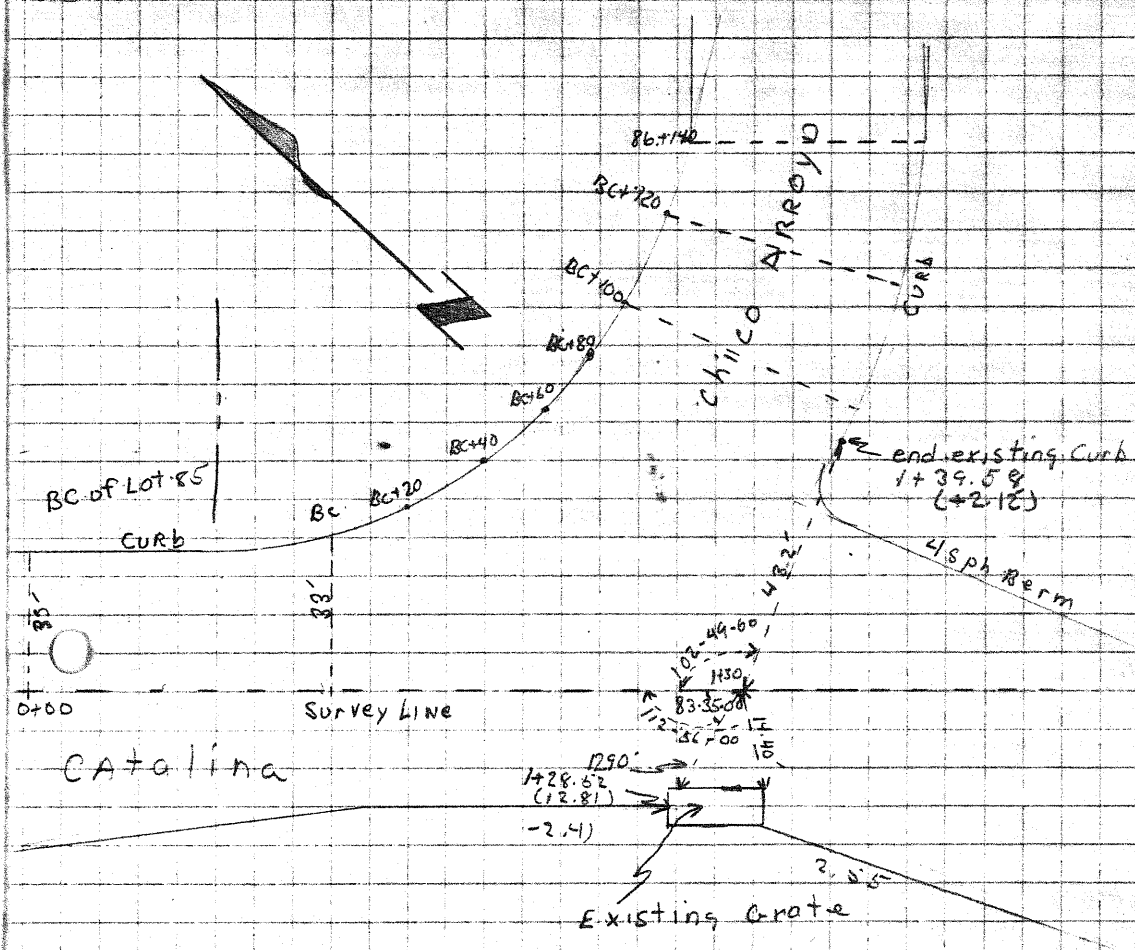


# x-sections Catalina at Arroyo Chico (Drainage Problem at Intersection)



Note: "Group I" x-sections were taken using survey line as shown.  
 "Group II" Profiles & radial x-sections were to both Catalina st. & Arroyo Chico as a base for measurements. Station origin being BC of Arroyo Chico. Measurements are of Circular Curb length.