

CORNER RECORD

Document Number 2005-0481

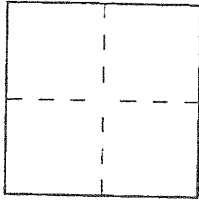
City of LAGUNA BEACH

County of ORANGE, California

Brief Legal Description TRACT NO. 4515, M.M. 192/17-18,

BC AND EC OF STARLIT DRIVE, SOUTHWEST OF MORNINGSIDE DR.

COORDINATES (Optional)



CORNER TYPE

- Government Corner Control
- Meander Property
- Rancho Other

Date of Survey JAN 2005

N. _____
 E. _____
 Zone _____ NAD27 NAD83
 NAD83 Epoch _____
 Elev. _____
 Vert. Datum: NGVD29 NAVD88
 Meas. Units: Metric Imperial
 U.S. Survey foot

Corner — Left as found Found and tagged Established Reestablished Rebuilt

Identification and type of corner found; Evidence used to identify or procedure used to establish or reestablish the corner:

SEE REVERSE FOR PARTICULARS.

A description of the physical condition of the monument as found and as set or reset:

SEE REVERSE FOR PARTICULARS.

SURVEYOR'S STATEMENT

This Corner Record was prepared by me or under my direction in conformance with the Land Surveyor's Act on APRIL 1, 2005

Signed [Signature] (L.S.) or R.C.E. No. 6178



COUNTY SURVEYOR'S STATEMENT

This Corner Record was received APR 11 2005

and examined and filed OCT 17 2005

Signed [Signature] (L.S.) or R.C.E. No. 7212

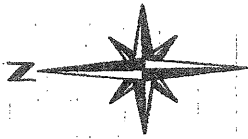
Title DEPUTY COUNTY SURVEYOR



County Surveyor's Comment _____

NOTE: UNLESS NOTED, FOUND CROSSES ARE NO REFERENCE.

SEE CR 2005-0480



SCALE: 1"=20'

TR. NO 4515

LOT 2

LOT 28

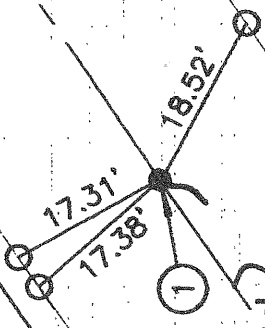
STABLET DR. $R=555', 00"$ $\Delta=115.5911'$

M.M 192/17--18.

LOT 3

LOT 27

SEE CR 2005-0482



INDICATES FOUND GEAR SPIKE AND WASHER STAMPED LS 4653, NO REF.

INDICATES FOUND CROSS IN TOP CURB, SET LEAD, TACK AND TAG STAMPED LS 6178.

