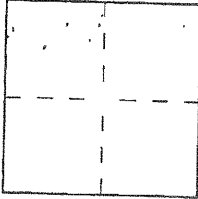


CORNER RECORD

Document Number 2005-0486  
City of LAGUNA BEACH County of ORANGE, California

Brief Legal Description TRACT No 3617, M.M. 137/41-43.  
MORNINGSIDE DRIVE, EC LOT 54 AND INTERSECTION  
MORNINGSIDE DRIVE WITH LAVENDER LANE. COORDINATES (Optional)



CORNER TYPE

Government Corner  Control   
Meander  Property   
Rancho  Other   
Date of Survey JAN 2005

N. \_\_\_\_\_  
E. \_\_\_\_\_  
Zone \_\_\_\_\_ NAD27  NAD83   
NAD83 Epoch \_\_\_\_\_  
Elev. \_\_\_\_\_  
Vert. Datum: NGVD29  NAVD88   
Meas. Units: Metric  Imperial   
U.S. Survey foot

Corner — Left as found  Found and tagged  Established  Reestablished  Rebuilt

Identification and type of corner found; Evidence used to identify or procedure used to establish or reestablish the corner:  
SEE REVERSE FOR PARTICULARS.

A description of the physical condition of the monument as found and as set or reset:  
SEE REVERSE FOR PARTICULARS.

SURVEYOR'S STATEMENT

This Corner Record was prepared by me or under my direction in conformance with the Land Surveyor's Act on APRIL 4, 2005  
Signed [Signature] (L.S.) or R.C.E. No. 6178



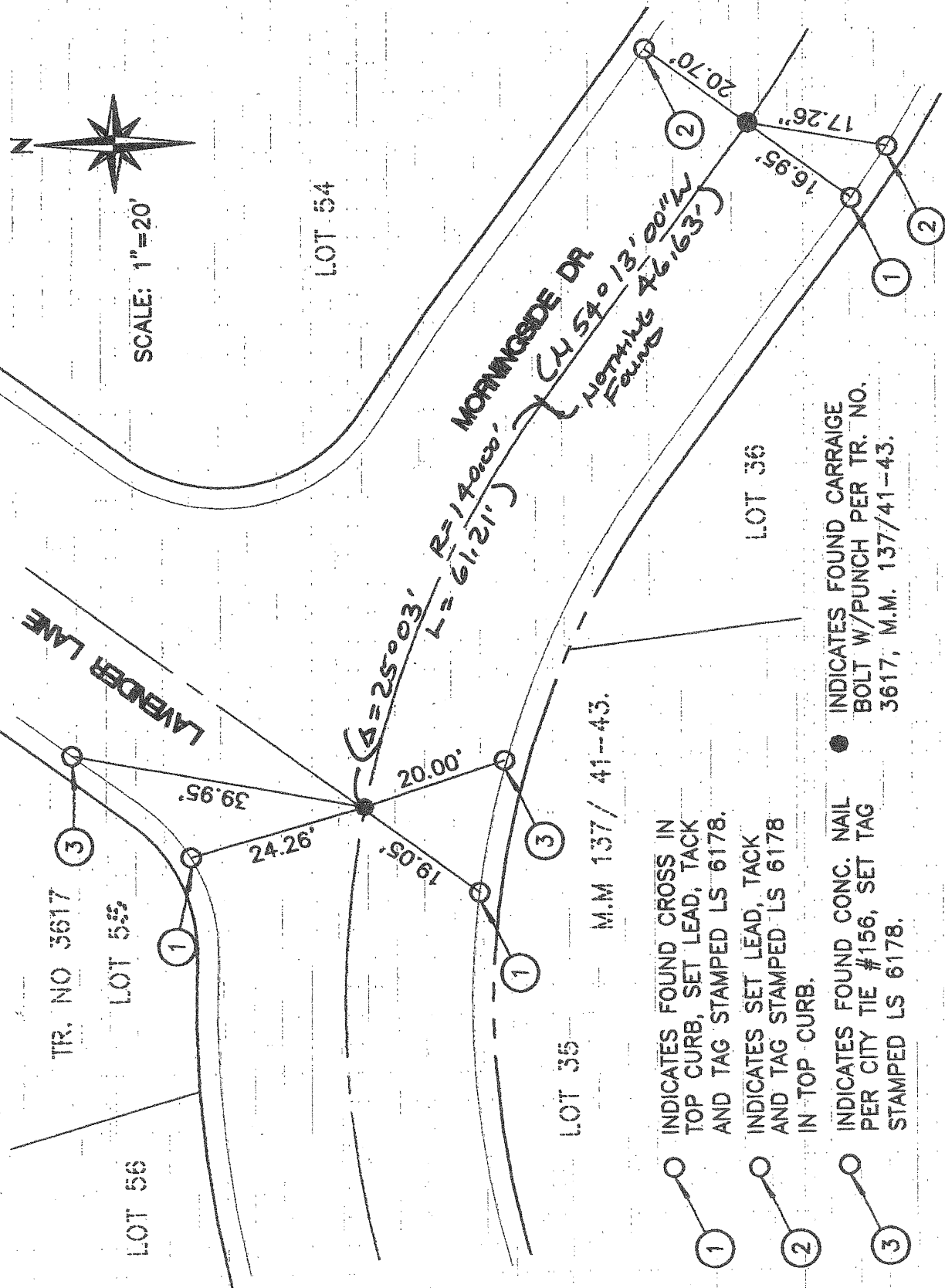
COUNTY SURVEYOR'S STATEMENT

This Corner Record was received APR 11 2005  
and examined and filed OCT 17 2005  
Signed [Signature] (L.S.) or R.C.E. No. 7212  
Title DEPUTY COUNTY SURVEYOR



County Surveyor's Comment \_\_\_\_\_  
\_\_\_\_\_  
\_\_\_\_\_

NOTE: UNLESS NOTED, FOUND CROSSES ARE NO REFERENCED.  
 2) (---) INDICATES RECORDS PER TR. NO. 3617, M.M. 137/41-43.



- ① INDICATES FOUND CROSS IN TOP CURB, SET LEAD, TACK AND TAG STAMPED LS 6178.
- ② INDICATES SET LEAD, TACK AND TAG STAMPED LS 6178 IN TOP CURB.
- ③ INDICATES FOUND CONC. NAIL PER CITY TIE #156, SET TAG STAMPED LS 6178.
- INDICATES FOUND CARRIAGE BOLT W/PUNCH PER TR. NO. 3617, M.M. 137/41-43.