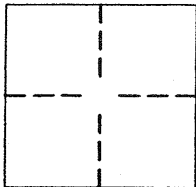


**CORNER RECORD**

Document Number 2004-0851 A

City of LAGUNA BEACH County of ORANGE, California

Brief Legal Description AT THE APPARENT CENTERLINE INTERSECTION OF ENSENADA AVENUE and LA MIRADA STREET.



**CORNER TYPE**

Government corner  Control   
Meander  Property   
Rancho  Other   
Date of Survey 9/02/03

**COORDINATES (OPTIONAL)**

N. \_\_\_\_\_  
E. \_\_\_\_\_  
Zone \_\_\_\_\_ NAD27  NAD83   
NAD83 Epoch \_\_\_\_\_  
Elev. \_\_\_\_\_  
Vert. Datum:  NCV29  NAVD88   
Meas. Units:  Metric  Imperial

Corner- Left as found  Found and tagged  Established  Reestablished  Rebuilt

Identification and type of corner found: Evidence used to identify or procedure used to establish or reestablish the corner:  
**SEE SHEET 2 OF THIS RECORD**

**THESE TIES ARE FOR THE PURPOSE OF PERPETUATING THE FOUND MONUMENTATION. NO CLAIM IS MADE AS TO THE RELATIONSHIP OF THE POINTS OR LINES SHOWN HEREON TO TRUE BOUNDARY LOCATIONS.**

A description of the physical condition of the monument as found and as set or reset:  
**SEE SHEET 2 OF THIS RECORD**

**SURVEYOR'S STATEMENT**

This Corner Record was prepared by me or under my direction in conformance with the Land Surveyors' Act on 7/19/04

Signed Richard C. Maher P.L.S. or R.C.E. Number 7564



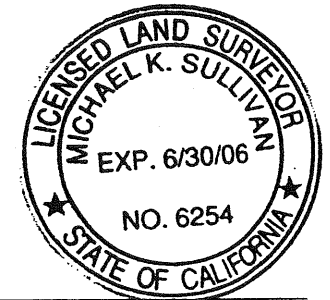
**COUNTY SURVEYOR'S STATEMENT**

This Corner Record was received MAY 17 2004

and examined and filed JUL 30 2004

Signed Michael K. Sullivan P.L.S. or R.C.E. Number C.S. 6254

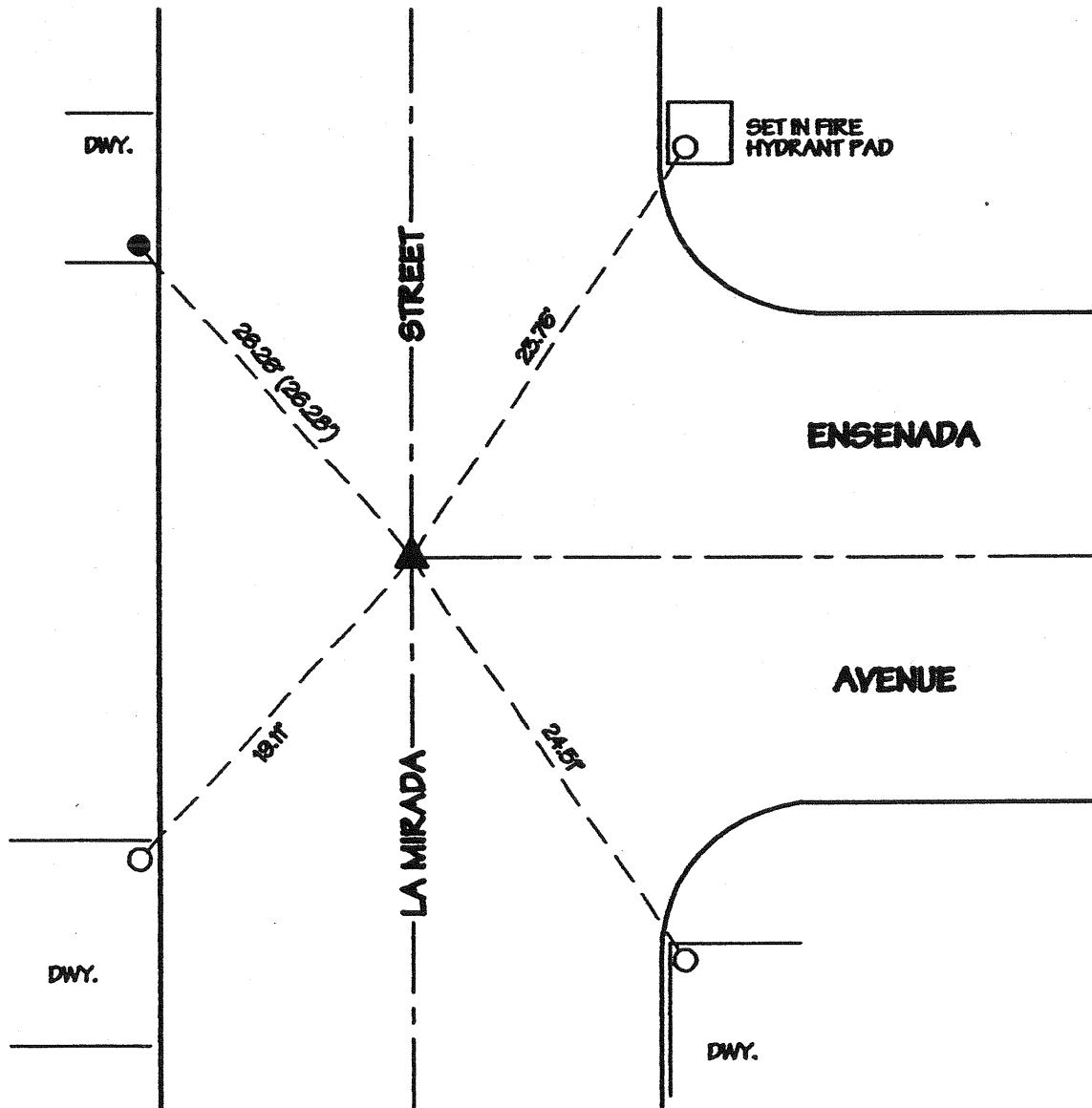
Title DEPUTY COUNTY SURVEYOR



County Surveyor's Comment \_\_\_\_\_

**LEGEND**

- ▲ FD. SPIKE, DOWN 0.10', NO RECORD, IN LIEU OF BOLT PER CITY OF LAGUNA BEACH TIE NOTES IN BOOK T-407, PAGE 80.
- FD. CHISLED "X" PER CITY OF LAGUNA BEACH TIE NOTES IN BOOK T-407, PAGE 80. SET LEAD & BRASS TAG STAMPED "P.L.S. 7564."
- SET LEAD & BRASS TAG STAMPED "P.L.S. 7564" IN CONCRETE PAD OF DRIVEWAY, UNLESS OTHERWISE NOTED.
- ( ) RECORD DATA PER CITY OF LAGUNA BEACH TIE NOTES IN BOOK T-407, PAGE 80.



**GLENNEYRE STREET  
REHABILITATION – 2002**

**CORNER RECORDS**

