

CORNER RECORD

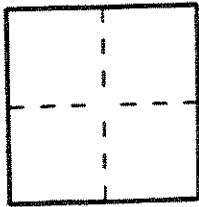
Document Number 2007-1151A

City of LAGUNA BEACH

County of ORANGE, California

Brief Legal Description CENTER LINE OF BLUEBIRD CANYON ROAD

COORDINATES (Optional)



CORNER TYPE

Government Corner Control
 Meander Property
 Rancho Other
 Date of Survey MARCH 19, 2007

N. _____
 E. _____
 Zone NAD27 NAD83
 NAD83 Epoch _____
 Elevation. _____
 Vertical Datum: NGVD29 NAVD88
 Units: Metric Imperial U.S. Survey

Corner — Left as found Found and tagged Established Reestablished Rebuilt

Identification and type of corner found; Evidence used to identify or procedure used to establish or reestablish the corner.
FOUND SPIKE & WASHER "L.S. 5301"

THE PURPOSE OF THIS SURVEY WAS TO TIE OUT MONUMENT PRIOR TO PAVEMENT REHAB PROJECT.

A description of the physical condition of the monument as found and as set or reset: SEE PAGE 2.
ACCEPTED AS MONUMENT SHOWN ON CORNER RECORD 2003-1582 B.

SURVEYOR'S STATEMENT

This Corner Record was prepared by me or under my direction in conformance with the Professional Land Surveyors' Act on JULY 5, 2007

Signed [Signature] P.L.S. or R.C.E. No. 8072



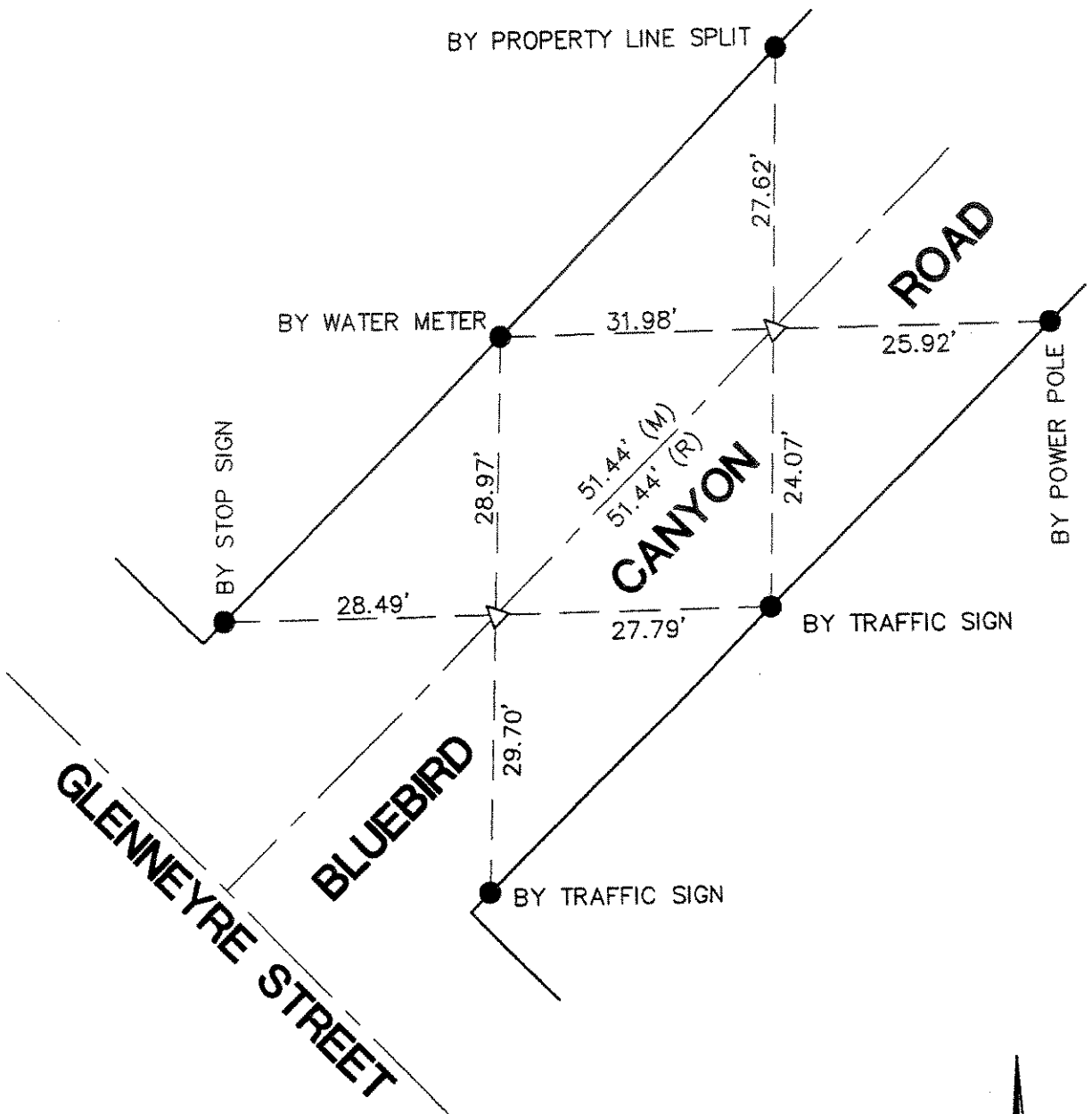
COUNTY SURVEYOR'S STATEMENT

This Corner Record was received JUL 25 2007
 examined and filed AUG 17 2007

Signed [Signature] P.L.S. or R.C.E. No. 7212
 Title DEPUTY COUNTY SURVEYOR



County Surveyor's Comment _____



- △ FOUND SPIKE & WASHER "L.S. 5301"
- SET PK
- (M) MEASURED DISTANCE
- (R) RECORDED DISTANCE



NOTE: ALL TIES ARE TEMPORARY. PERMANANT TIES WILL BE SET AFTER CONSTRUCTION.