

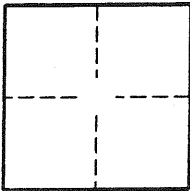
CORNER RECORD

Document Number 2002-1936A

City of LAGUNA BEACH

County of ORANGE, California

Brief Legal Description MC KNIGHTS ADDITION, TRACT NO. 3620



CORNER TYPE

Government Corner Control
Meander Property
Rancho Other
Date of Survey 9-1-02

COORDINATES (OPTIONAL)

N. _____
E. _____
Zone NAD27 NAD83
NAD83 Epoch _____
Elev. _____
Vert. Datum: NGVD29 NAVD88
Meas. Units: Metric Imperial

Corner- Left as found Found and tagged Established Reestablished Rebuilt

Identification and type of corner found; Evidence used to identify or procedure used to establish or reestablish the corner:

FD. RR SPIKE OR S 9' W TAGGED LS 4653

A description of the physical condition of the monument as found and as set or reset:

SURVEYOR'S STATEMENT

This Corner Record was prepared by me or under my direction in conformance with the Land Surveyors' Act on 9-20-02

Signed Ron Miedema P.L.S. or R.C.E. Number 4653



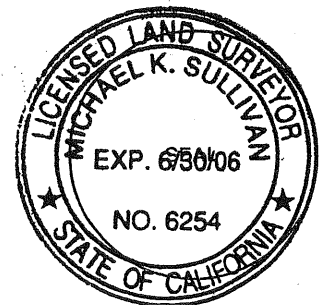
COUNTY SURVEYOR'S STATEMENT

This Corner Record was received FEB 05 2003

and examined and filed 03-07-03

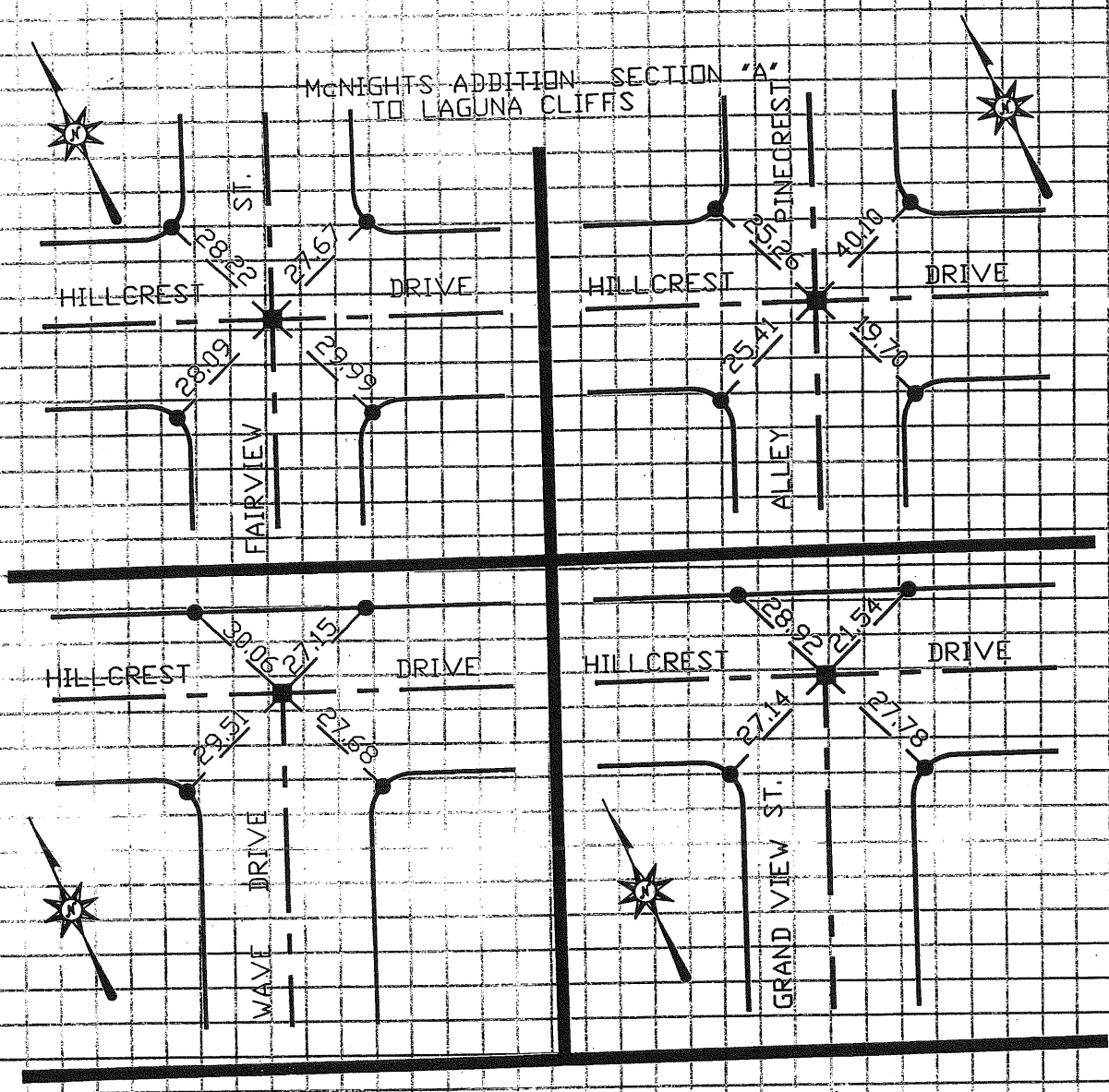
Signed Michael K. Sullivan P.L.S. or R.C.E. Number LS. 6254

Title DEPUTY COUNTY SURVEYOR

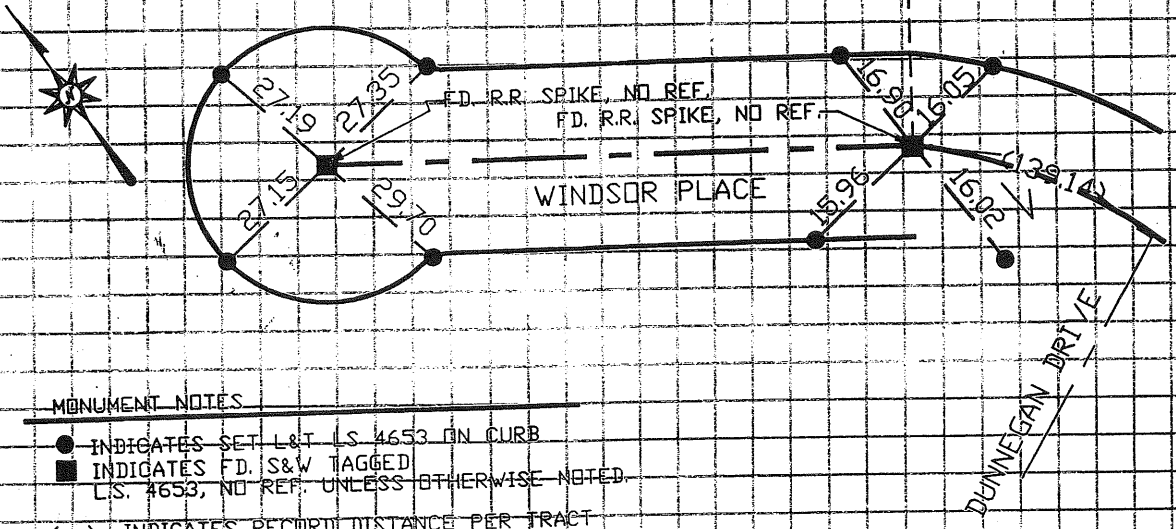


County Surveyor's Comment _____

McNIGHTS ADDITION SECTION "A"
TO LAGUNA CLIFFS



TRACT NO. 3620



MONUMENT NOTES

- INDICATES SET L&T LS 4653 ON CURB
- INDICATES FD. S&W TAGGED
LS. 4653, NO REF. UNLESS OTHERWISE NOTED.
- () INDICATES RECORD DISTANCE PER TRACT
NO. 3620