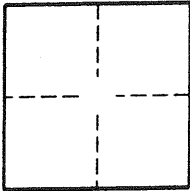


CORNER RECORD

Document Number 2002-1921 A

City of LAGUNA BEACH County of ORANGE, California

Brief Legal Description TRACT No. 1099



CORNER TYPE

Government Corner Control
 Meander Property
 Rancho Other
 Date of Survey 9-1-02

COORDINATES (OPTIONAL)

N. _____
 E. _____
 Zone NAD27 NAD83
 NAD83 Epoch _____
 Elev. _____
 Vert. Datum: NGVD29 NAVD88
 Meas. Units: Metric Imperial

Corner- Left as found Found and tagged Established Reestablished Rebuilt

Identification and type of corner found: Evidence used to identify or procedure used to establish or reestablish the corner:

FD. SW TAGGED LS 4653

A description of the physical condition of the monument as found and as set or reset:

SURVEYOR'S STATEMENT

This Corner Record was prepared by me or under my direction in conformance with the Land Surveyors' Act on 9-20-02

Signed Rm Miedema P.L.S. or R.C.E. Number 4653



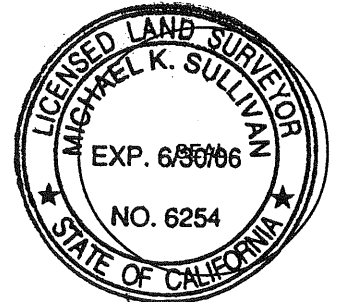
COUNTY SURVEYOR'S STATEMENT

This Corner Record was received FEB 05 2003

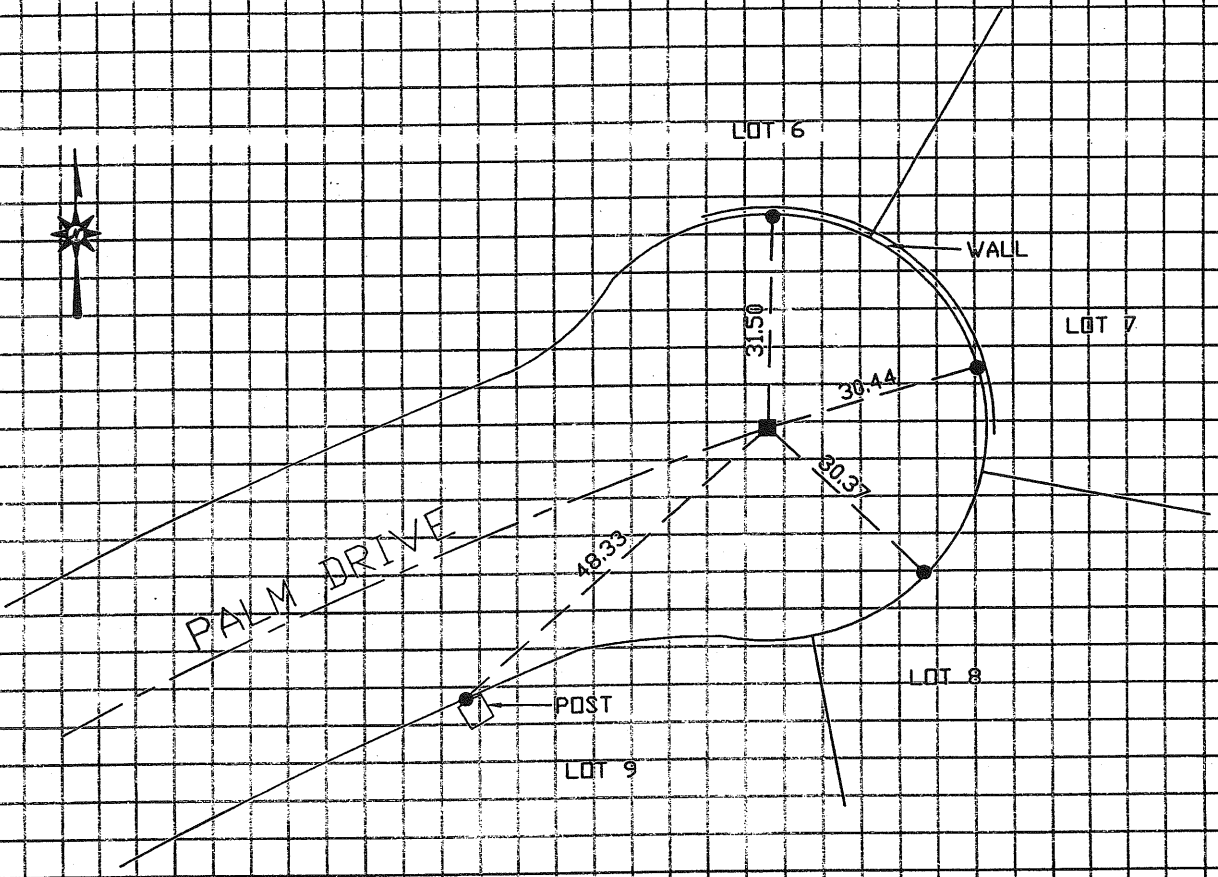
and examined and filed 03-07-03

Signed Michael K. Sullivan P.L.S. or R.C.E. Number LS. 6254

Title DEPUTY COUNTY SURVEYOR



County Surveyor's Comment _____



MONUMENT NOTES

- INDICATES SET L&T L.S. 4653.
- INDICATES F.D. S & V TAGGED L.S. 4653, NO REF.