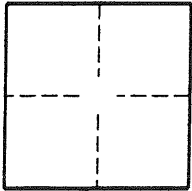


CORNER RECORD

Document Number 2002-1926A

City of LAGUNA BEACH County of ORANGE, California

Brief Legal Description TRACT NO. 2531



CORNER TYPE

Government Corner Control
Meander Property
Rancho Other
Date of Survey 9-1-02

COORDINATES (OPTIONAL)

N. _____
E. _____
Zone _____ NAD27 NAD83
NAD83 Epoch _____
Elev. _____
Vert. Datum: NGVD29 NAVD88
Meas. Units: Metric Imperial

Corner- Left as found Found and tagged Established Reestablished Rebuilt

Identification and type of corner found; Evidence used to identify or procedure used to establish or reestablish the corner:

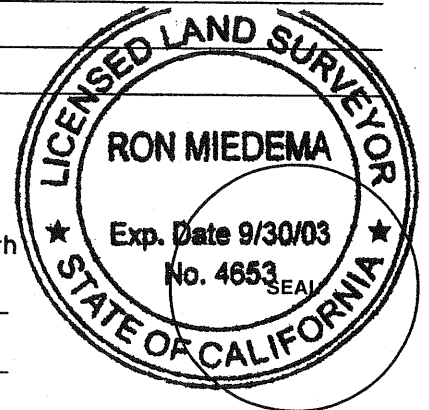
FD. S&W TAGGED LS 4653

A description of the physical condition of the monument as found and as set or reset: _____

SURVEYOR'S STATEMENT

This Corner Record was prepared by me or under my direction in conformance with the Land Surveyors' Act on 9-20-02

Signed Ron Miedema P.L.S. or R.C.E. Number 4653



COUNTY SURVEYOR'S STATEMENT

This Corner Record was received FEB 05 2003

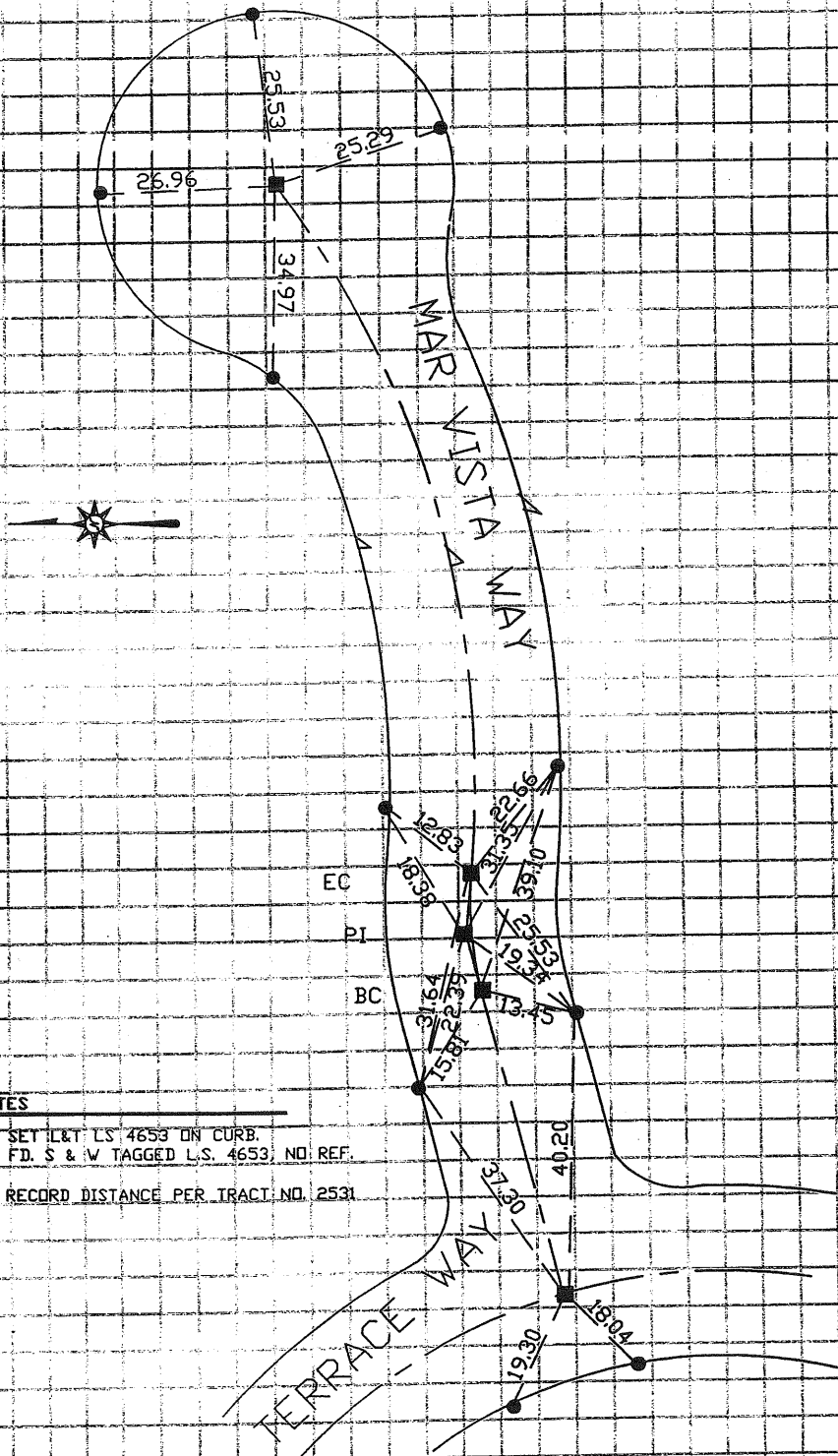
and examined and filed 03-07-03

Signed Michael K. Sullivan P.L.S. or R.C.E. Number LS. 6254

Title DEPUTY COUNTY SURVEYOR



County Surveyor's Comment _____



MONUMENT NOTES

- INDICATES SET I&T L.S. 4653 ON CURB.
- INDICATES F.D. S & W TAGGED L.S. 4653; NO REF.
- () INDICATES RECORD DISTANCE PER TRACT NO. 2531