

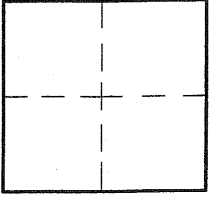
CORNER RECORD

City of LAGUNA BEACH

Document Number 2003-1581 B

County of ORANGE, California

Brief Legal Description APPARENT & INTX. GLENNEYRE & EL CAMINO DEL MAR



CORNERTYPE

Govt. Corner Control
 Meander Property
 Rancho Other
 Date of Survey 6-6-03

COORDINATES (Optional)

N. _____
 E. _____
 Zone _____ NAD27 NAD83
 NAD83 Epoch _____
 Elev. _____
 Vert. Datum: NGVD29 NAVD88
 Meas. Units: Metric Imperial

Corner - Left as found Found & tagged Established Reestablished Rebuilt

Identification and type of corner found: Evidence used to identify or procedure used to establish or reestablish the corner:

FD. NOTHING - RE-ESTABLISHED PER
CORNER RECORD 2003-981A

A description of the physical condition of the monument as found and as set or reset: _____

SEE PAGE 2

SURVEYOR'S STATEMENT

This Corner Record was prepared by me or under my direction in conformance
 with the Land Surveyors' Act on AUGUST 6 2003

Signed David O. Knell (P.L.S.) or R.C.E. No. 5301



COUNTY SURVEYOR'S STATEMENT

This Corner Record was received AUG 18 2003

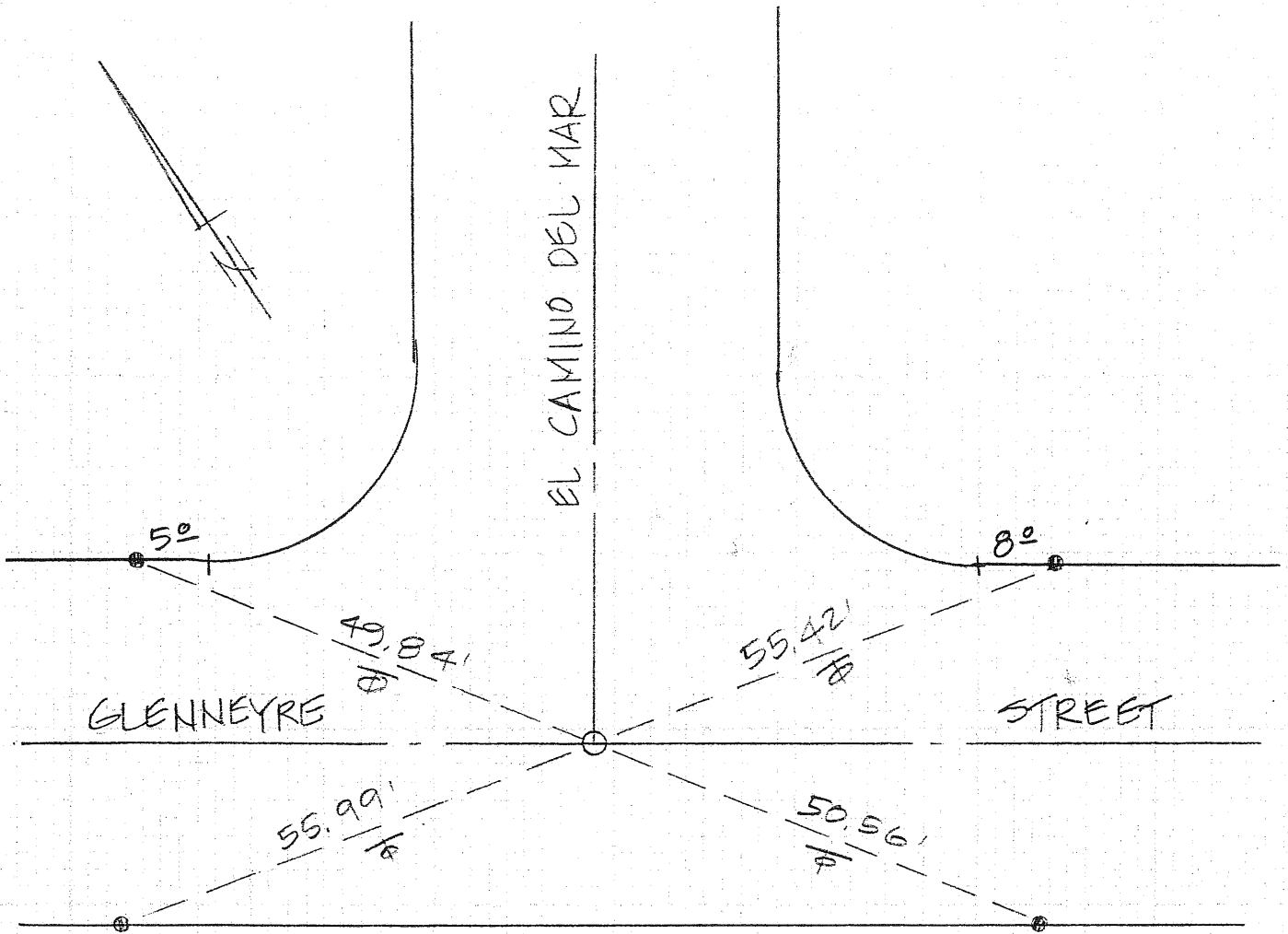
and examined and filed SEP 05 2003

Signed Michael K. Sullivan P.L.S. or R.C.E. No. LS. 6254

Title: DEPUTY COUNTY SURVEYOR



County Surveyor's Comment _____



- FD. LET & TIE
LS 5301
- SET SPIKE & WASHER
LS 5301 (FLUSH)