

CORNER RECORD

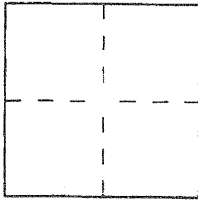
Document Number 2005-1185A

City of LAGUNA BEACH

County of ORANGE, California

Brief Legal Description TRACT No. 4514, M.M. 193/1-2; RADIUS POINT MORNINGSIDE CIRCLE AND INTERSECTION WITH MORNINGSIDE DRIVE.

COORDINATES (Optional)



CORNER TYPE

- Government Corner Control
- Meander Property
- Rancho Other

Date of Survey AUGUST 2005

N. _____
 E. _____
 Zone _____ NAD27 NAD83
 NAD83 Epoch _____
 Elev. _____
 Vert. Datum: NGVD29 NAVD88
 Meas. Units: Metric Imperial
 U.S. Survey foot

Corner — Left as found Found and tagged Established Reestablished Rebuilt

Identification and type of corner found; Evidence used to identify or procedure used to establish or reestablish the corner:

SEE REVERSE FOR PARTICULARS

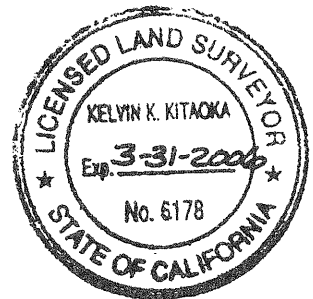
A description of the physical condition of the monument as found and as set or reset:

SEE REVERSE FOR PARTICULARS

SURVEYOR'S STATEMENT

This Corner Record was prepared by me or under my direction in conformance with the Land Surveyor's Act on SEPTEMBER 8, 2005

Signed [Signature] (L.S.) or R.C.E. No. 6178



COUNTY SURVEYOR'S STATEMENT

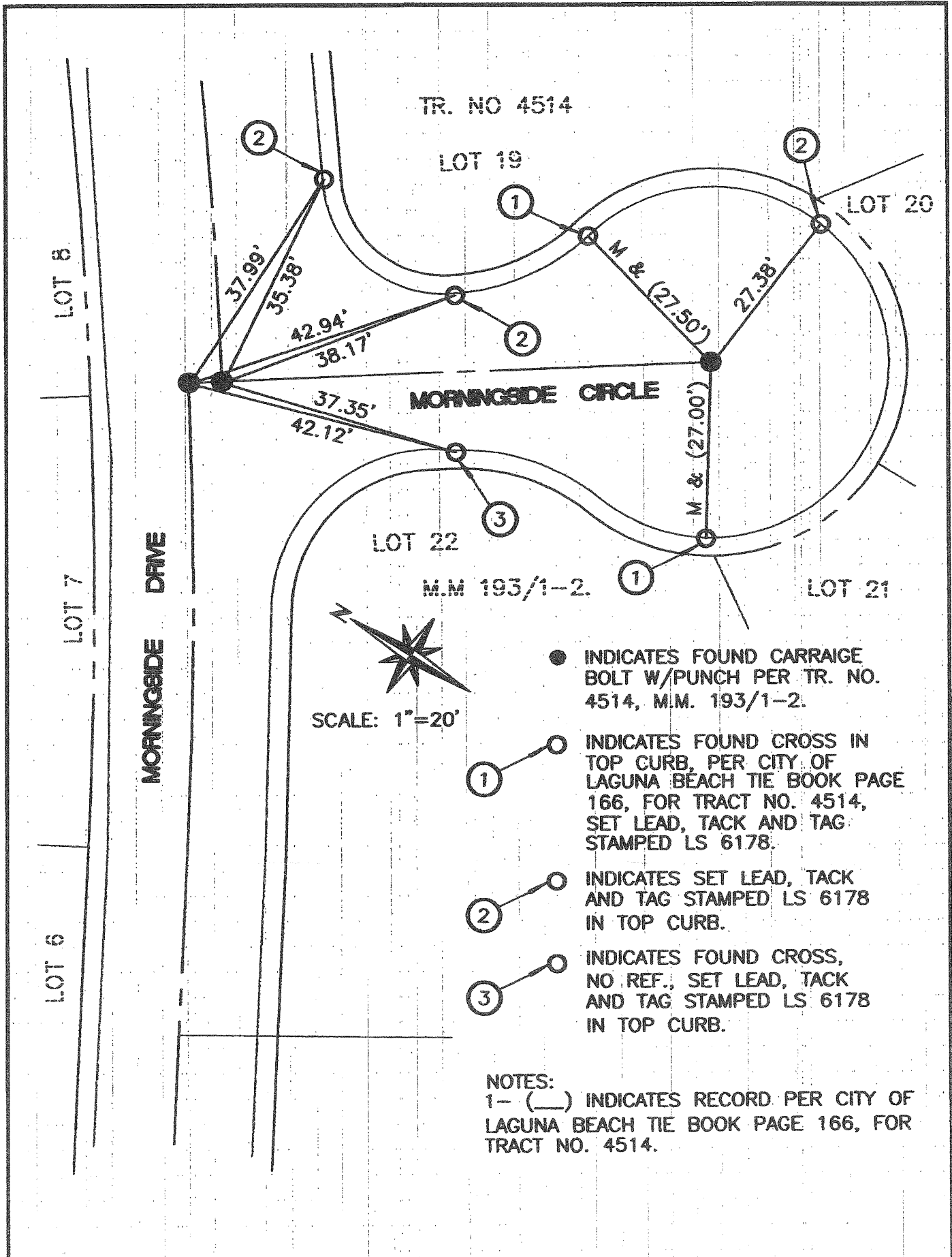
This Corner Record was received OCT 06 2005 and examined and filed DEC 21 2005

Signed [Signature] (L.S.) or R.C.E. No. 7212

Title DEPUTY COUNTY SURVEYOR



County Surveyor's Comment _____



TR. NO 4514

LOT 19

LOT 20

MORNINGSIDE CIRCLE

LOT 22

M.M 193/1-2.

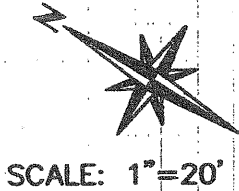
LOT 21

MORNINGSIDE DRIVE

LOT 8

LOT 7

LOT 6



● INDICATES FOUND CARRIAGE BOLT W/PUNCH PER TR. NO. 4514, M.M. 193/1-2.

① INDICATES FOUND CROSS IN TOP CURB, PER CITY OF LAGUNA BEACH TIE BOOK PAGE 166, FOR TRACT NO. 4514, SET LEAD, TACK AND TAG STAMPED LS 6178.

② INDICATES SET LEAD, TACK AND TAG STAMPED LS 6178 IN TOP CURB.

③ INDICATES FOUND CROSS, NO REF., SET LEAD, TACK AND TAG STAMPED LS 6178 IN TOP CURB.

NOTES:
1- () INDICATES RECORD PER CITY OF LAGUNA BEACH TIE BOOK PAGE 166, FOR TRACT NO. 4514.