

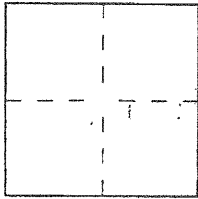
CORNER RECORD

Document Number 2005-0484

City of LAGUNA BEACH County of ORANGE, California

Brief Legal Description TRACT No. 3617, M.M. 137/41-43, MORNINGSIDE DRIVE, BC AT LOT 48 AND EC AT LOT 49.

COORDINATES (Optional)



CORNER TYPE

- Government Corner Control
- Meander Property
- Rancho Other

Date of Survey JAN, 2005

N. _____
 E. _____
 Zone NAD27 NAD83
 NAD83 Epoch _____
 Elev. _____
 Vert. Datum: NGVD29 NAVD88
 Meas. Units: Metric Imperial
 U.S. Survey foot

Corner — Left as found Found and tagged Established Reestablished Rebuilt

Identification and type of corner found; Evidence used to identify or procedure used to establish or reestablish the corner:

SEE REVERSE FOR PARTICULARS

A description of the physical condition of the monument as found and as set or reset: _____

SEE REVERSE FOR PARTICULARS.

SURVEYOR'S STATEMENT

This Corner Record was prepared by me or under my direction in conformance with the Land Surveyor's Act on APRIL 1, 2005

Signed [Signature] (LS) or R.C.E. No. 6178



COUNTY SURVEYOR'S STATEMENT

This Corner Record was received APR 11 2005

and examined and filed OCT 17 2005

Signed [Signature] (LS) or R.C.E. No. 7212

Title DEPUTY COUNTY SURVEYOR

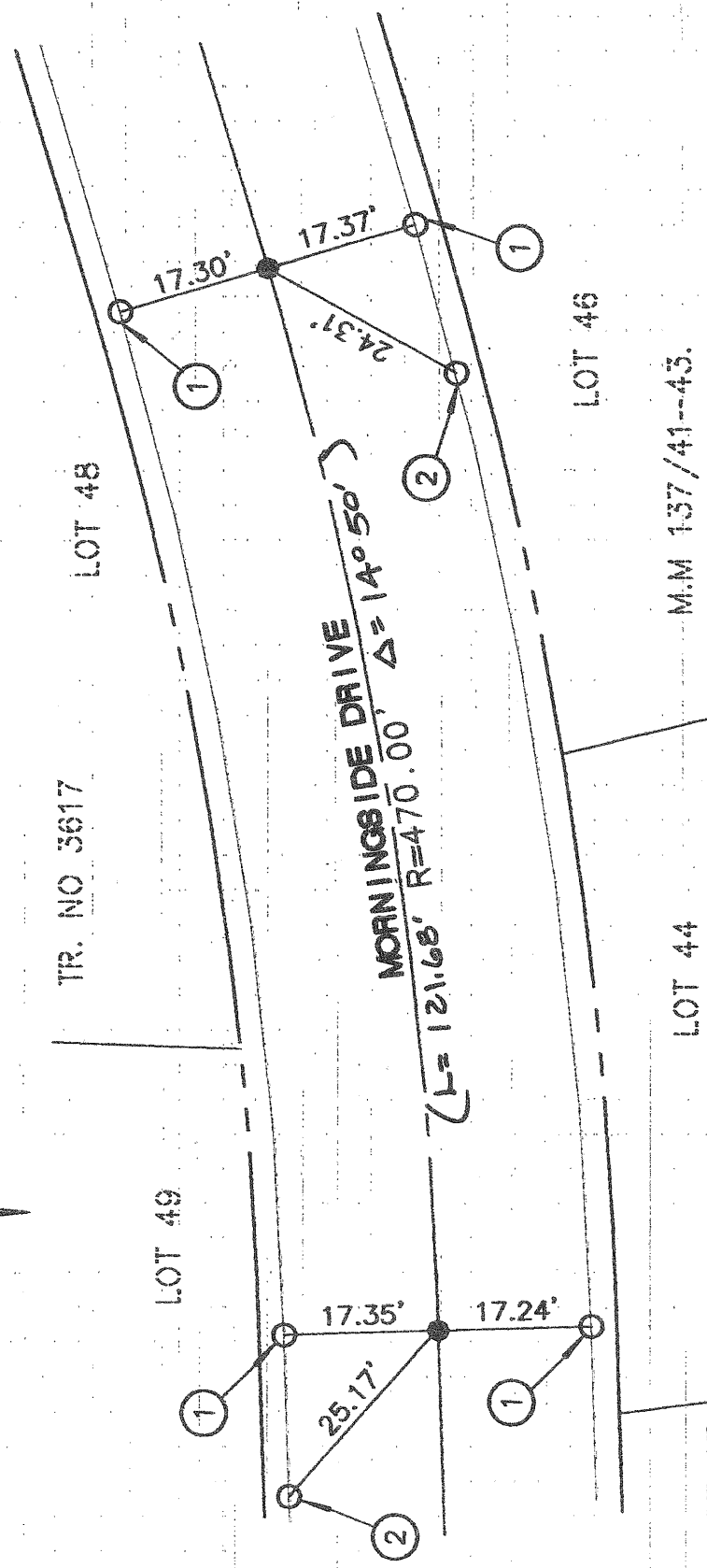


County Surveyor's Comment _____

NOTE:
 1- UNLESS NOTED, FOUND MONUMENTS ARE NO REFERENCE.
 2- (...) INDICATES RECORD PER TR. NO. 3617, M.M. 137/41-43.



SCALE: 1"=20'



INDICATES FOUND CROSS IN TOP CURB, SET LEAD, TACK AND TAG STAMPED LS 6178.

● INDICATES FOUND CARRIAGE BOLT W/PUNCH PER TR. NO. 3617, M.M. 137/41-43.

INDICATES SET LEAD, TACK AND TAG STAMPED LS 6178 IN TOP CURB.

