

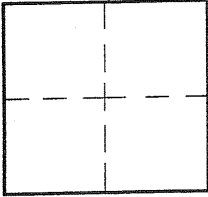
# CORNER RECORD

City of LAGUNA BEACH

Document Number 2003-1580 B

County of ORANGE, California

Brief Legal Description ± INTX. GLENNEYRE STREET & BROOKS STREET



### CORNERTYPE

Govt. Corner  Control   
 Meander  Property   
 Rancho  Other   
 Date of Survey 6-6-03

### COORDINATES (Optional)

N. \_\_\_\_\_  
 E. \_\_\_\_\_  
 Zone \_\_\_\_\_ NAD27  NAD83   
 NAD83 Epoch \_\_\_\_\_  
 Elev. \_\_\_\_\_  
 Vert. Datum: NGVD29  NAVD88   
 Meas. Units: Metric  Imperial

Corner - Left as found  Found & tagged  Established  Reestablished  Rebuilt

Identification and type of corner found: Evidence used to identify or procedure used to establish or reestablish the corner:

FD. NOTHING - RE-ESTABLISHED PER  
CORNER RECORD 2003-980A

A description of the physical condition of the monument as found and as set or reset: \_\_\_\_\_

SEE PAGE 2

### SURVEYOR'S STATEMENT

This Corner Record was prepared by me or under my direction in conformance with the Land Surveyors' Act on AUGUST 6 2003

Signed David O. Knell P.L.S. or R.C.E. No. 5301



### COUNTY SURVEYOR'S STATEMENT

This Corner Record was received AUG 18 2003

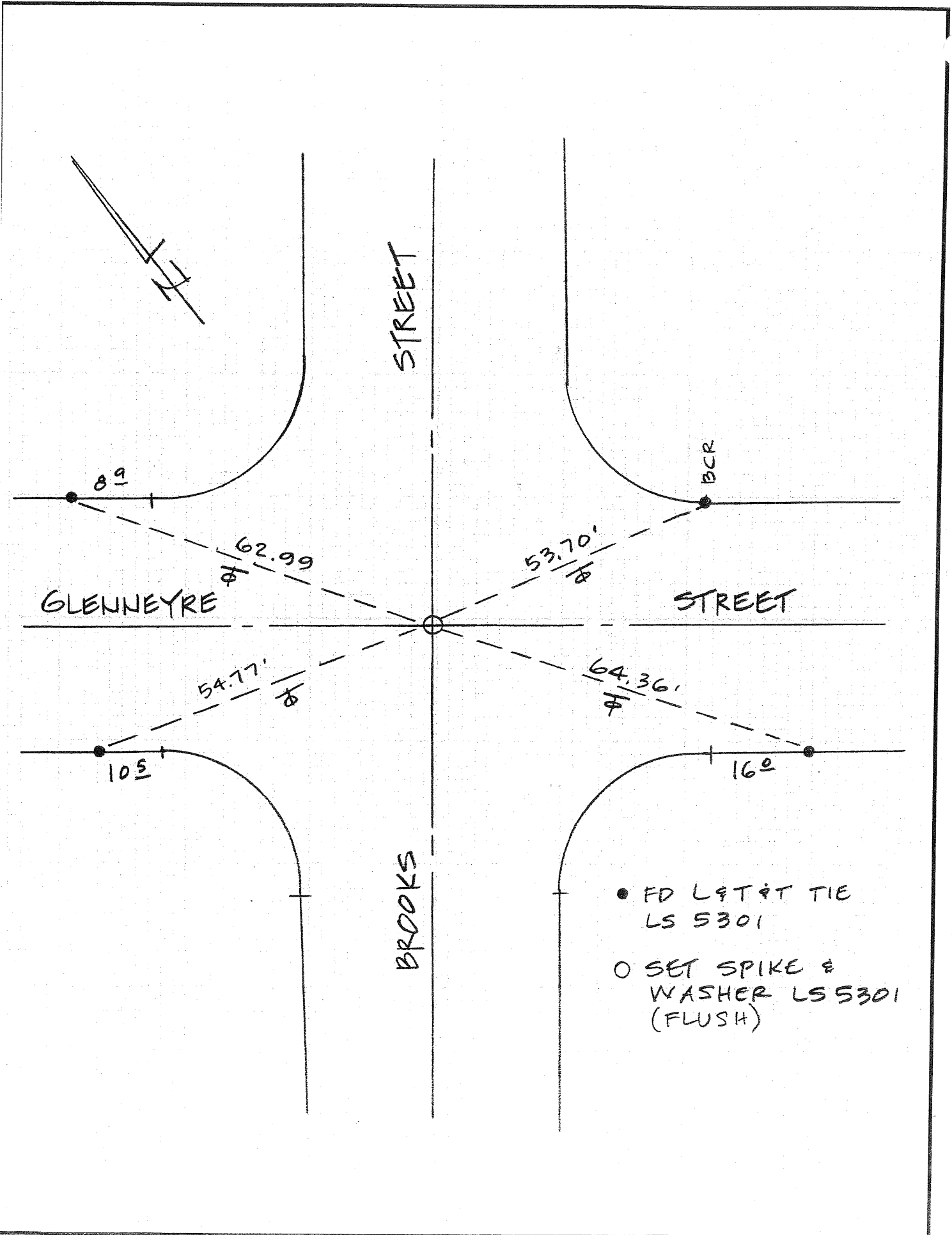
and examined and filed SEP 05 2003

Signed Michael K. Sullivan P.L.S. or R.C.E. No. LS. 6254

Title: DEPUTY COUNTY SURVEYOR



County Surveyor's Comment \_\_\_\_\_



EL TORO ROAD  
REHABILITATION – 2002

CORNER RECORDS

