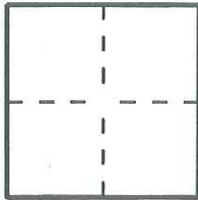


# CORNER RECORD

Document Number 2007-1150A

City of LAGUNA BEACH County of ORANGE, California

Brief Legal Description CENTER LINE INTERSECTION OF CATALINA STREET AND PALMER PLACE



### CORNER TYPE

- Government Corner  Control
- Meander  Property
- Rancho  Other

Date of Survey MARCH 19, 2007

### COORDINATES (Optional)

N. \_\_\_\_\_  
 E. \_\_\_\_\_  
 Zone \_\_\_\_\_ NAD27  NAD83   
 NAD83 Epoch \_\_\_\_\_  
 Elevation \_\_\_\_\_  
 Vertical Datum: NGVD29  NAVD88   
 Units: Metric  Imperial  U.S. Survey

Corner — Left as found  Found and tagged  Established  Reestablished  Rebuilt

Identification and type of corner found; Evidence used to identify or procedure used to establish or reestablish the corner:  
FOUND SPIKE & WASHER "L.S. 4653"

THE PURPOSE OF THIS SURVEY WAS TO TIE OUT MONUMENT PRIOR TO PAVEMENT REHAB PROJECT.

A description of the physical condition of the monument as found and as set or reset: SEE PAGE 2.

FOUND SPIKE AND WASHER ACCEPTED AS CENTERLINE INTERSECTION OF CATALINA STREET AND PALMER PLACE. NO REFERENCE.

### SURVEYOR'S STATEMENT

This Corner Record was prepared by me or under my direction in conformance with the Professional Land Surveyors' Act on JULY 5, 2007

Signed [Signature] P.L.S. or R.C.E. No. 8072



### COUNTY SURVEYOR'S STATEMENT

This Corner Record was received \_\_\_\_\_

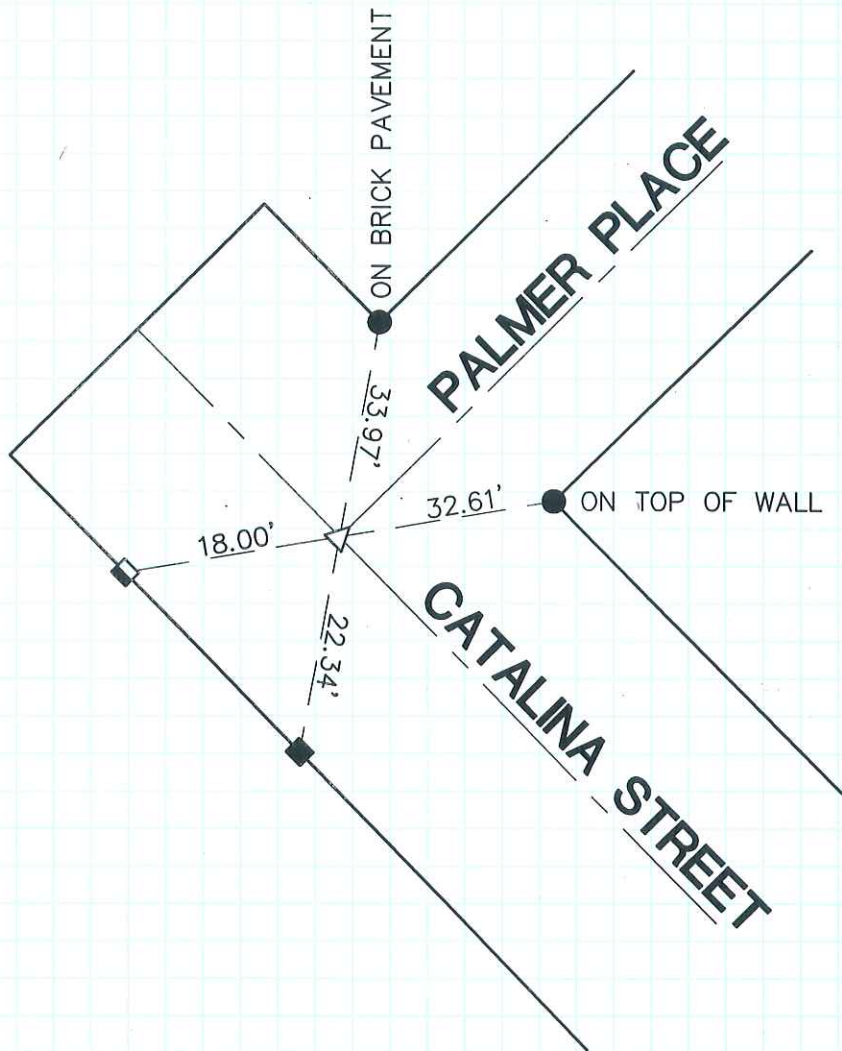
examined and filed \_\_\_\_\_

Signed \_\_\_\_\_ P.L.S. or R.C.E. No. \_\_\_\_\_

Title \_\_\_\_\_

County Surveyor's Comment \_\_\_\_\_





- △ FOUND SPIKE & WASHER "L.S. 4653", NO REF., ACCEPTED AS CENTERLINE INTERSECTION.
- SET CHISELED "X"
- SET PK IN TREE TRUNK
- ▣ FOUND NAIL IN RAILROAD TIE, NO REF.



N.T.S.

NOTE: ALL TIES ARE TEMPORARY. PERMANANT TIES WILL BE SET AFTER CONSTRUCTION.