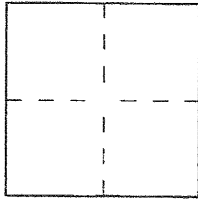


CORNER RECORD

Document Number 2005-1194A

City of LAGUNA BEACH County of ORANGE, California

Brief Legal Description TRACT No 4514, M.M. 193/1-2; BLUEBIRD CANYON ROAD, EC AND BC LOT 20, EC LOT 21 AND TRACT
COORDINATES (Optional) CORNER



CORNER TYPE

Government Corner Control
Meander Property
Rancho Other
Date of Survey AUGUST 2005

N. _____
E. _____
Zone _____ NAD27 NAD83
NAD83 Epoch _____
Elev. _____
Vert. Datum: NGVD29 NAVD88
Meas. Units: Metric Imperial
U.S. Survey foot

Corner — Left as found Found and tagged Established Reestablished Rebuilt

Identification and type of corner found; Evidence used to identify or procedure used to establish or reestablish the corner:
SEE REVERSE FOR FULL PARTICULARS

A description of the physical condition of the monument as found and as set or reset:
SEE REVERSE FOR FULL PARTICULARS.

SURVEYOR'S STATEMENT

This Corner Record was prepared by me or under my direction in conformance with the Land Surveyor's Act on OCTOBER 2, 2005
Signed [Signature] (L.S.) or R.C.E. No. 6178

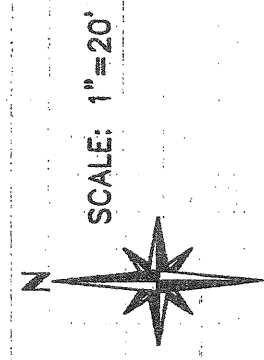
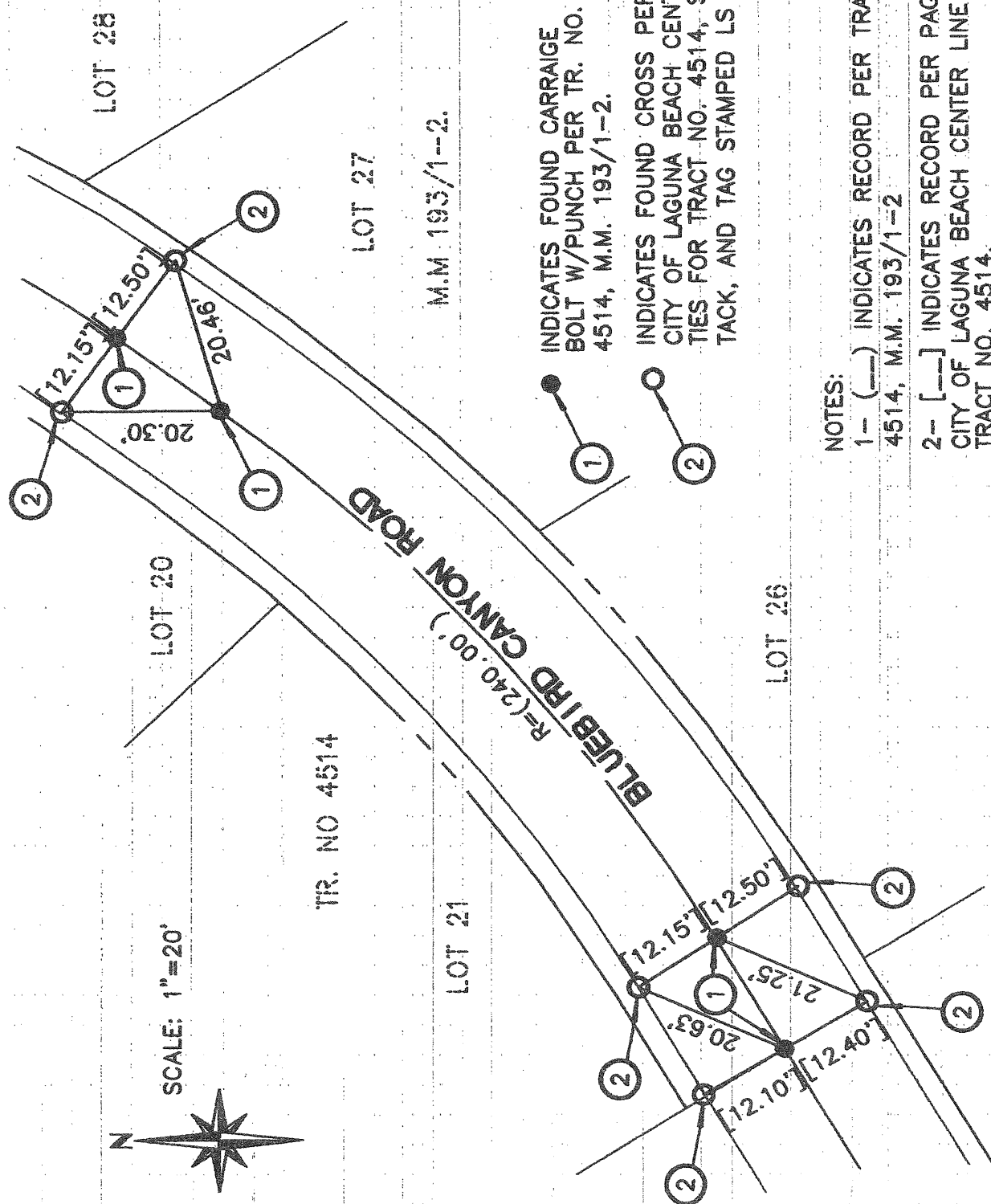


COUNTY SURVEYOR'S STATEMENT

This Corner Record was received OCT 06 2005
and examined and filed DEC 21 2005
Signed [Signature] (L.S.) or R.C.E. No. 7212
Title DEPUTY COUNTY SURVEYOR



County Surveyor's Comment _____



M.M. 193/1-2.

INDICATES FOUND CARRIAGE
BOLT W/PUNCH PER TR. NO.
4514, M.M. 193/1-2.

INDICATES FOUND CROSS PER PAGE 4
CITY OF LAGUNA BEACH CENTER LINE
TIES FOR TRACT NO. 4514, SET LEAD,
TACK, AND TAG STAMPED LS 6178.

- NOTES:
- 1- (—) INDICATES RECORD PER TRACT NO. 4514, M.M. 193/1-2
 - 2- [---] INDICATES RECORD PER PAGE 4, CITY OF LAGUNA BEACH CENTER LINE TIES FOR TRACT NO. 4514.