

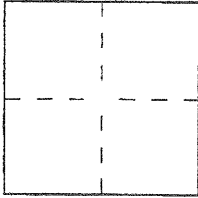
CORNER RECORD

Document Number 2005-1193A

City of LAGUNA BEACH County of ORANGE, California

Brief Legal Description TRACT No. 451A, M.M. 193/1-2;
BLUEBIRD CANYON ROAD, EC LOT 15 AND BC LOT 17

COORDINATES (Optional)



CORNER TYPE

Government Corner Control
Meander Property
Rancho Other

Date of Survey AUGUST 2005

N. _____
E. _____
Zone _____ NAD27 NAD83
NAD83 Epoch _____
Elev. _____
Vert. Datum: NGVD29 NAVD88
Meas. Units: Metric Imperial
U.S. Survey foot

Corner — Left as found Found and tagged Established Reestablished Rebuilt

Identification and type of corner found; Evidence used to identify or procedure used to establish or reestablish the corner:

SEE REVERSE FOR PARTICULARS

A description of the physical condition of the monument as found and as set or reset:

SEE REVERSE FOR PARTICULARS

SURVEYOR'S STATEMENT

This Corner Record was prepared by me or under my direction in conformance with the Land Surveyor's Act on SEPTEMBER 29, 2005

Signed [Signature] (L.S.) or R.C.E. No. 6178



COUNTY SURVEYOR'S STATEMENT

This Corner Record was received OCT 06 2005
and examined and filed DEC 21 2005

Signed [Signature] (L.S.) or R.C.E. No. 7212

Title DEPUTY COUNTY SURVEYOR

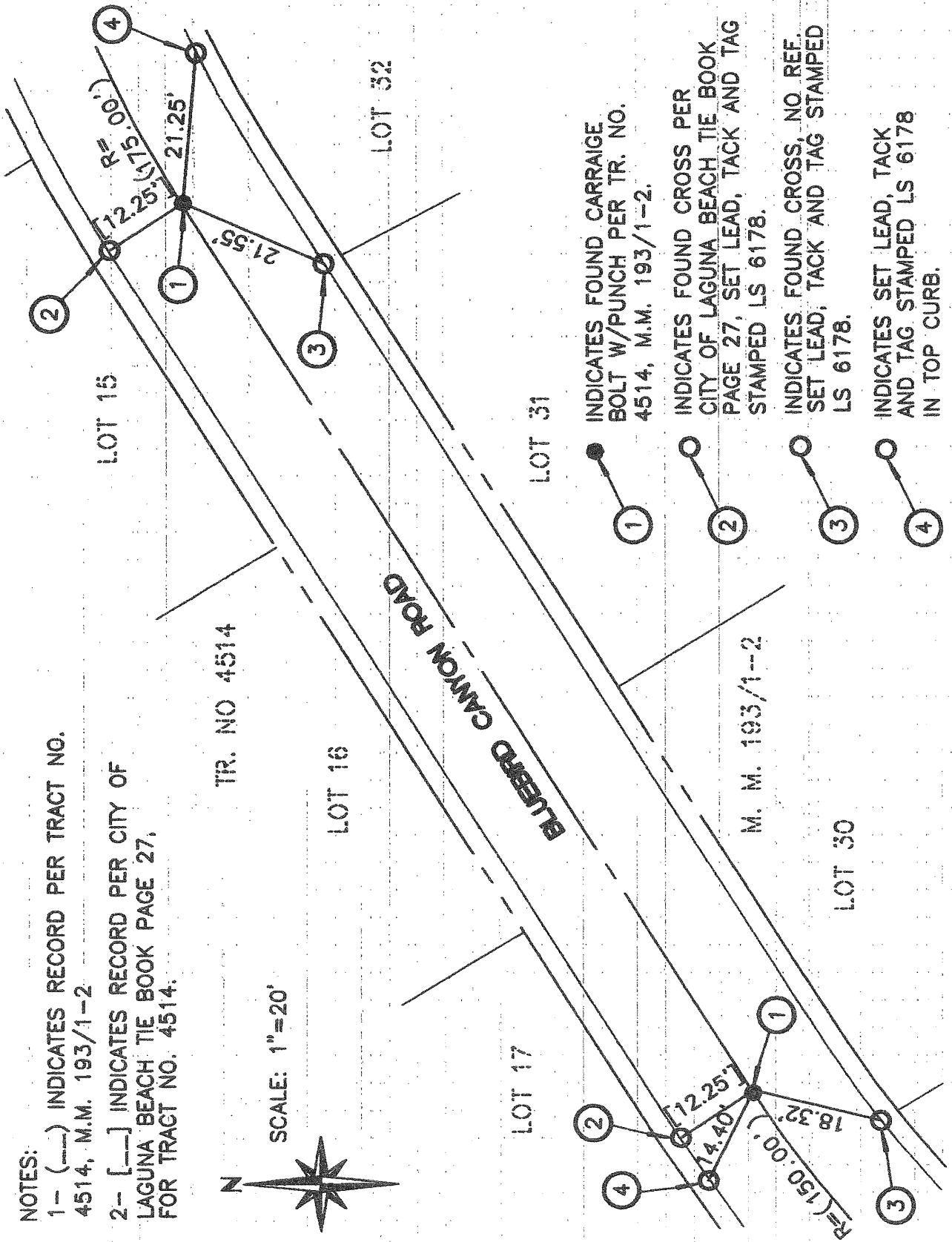


County Surveyor's Comment _____

NOTES:
 1- (---) INDICATES RECORD PER TRACT NO. 4514, M.M. 193/1-2
 2- [---] INDICATES RECORD PER CITY OF LAGUNA BEACH TIE BOOK PAGE 27, FOR TRACT NO. 4514.

TR. NO 4514

SCALE: 1"=20'



INDICATES FOUND CARRIAGE BOLT W/PUNCH PER TR. NO. 4514, M.M. 193/1-2.

INDICATES FOUND CROSS PER CITY OF LAGUNA BEACH TIE BOOK PAGE 27, SET LEAD, TACK AND TAG STAMPED LS 6178.

INDICATES FOUND CROSS, NO REF. SET LEAD, TACK AND TAG STAMPED LS 6178.

INDICATES SET LEAD, TACK AND TAG STAMPED LS 6178 IN TOP CURB.

