

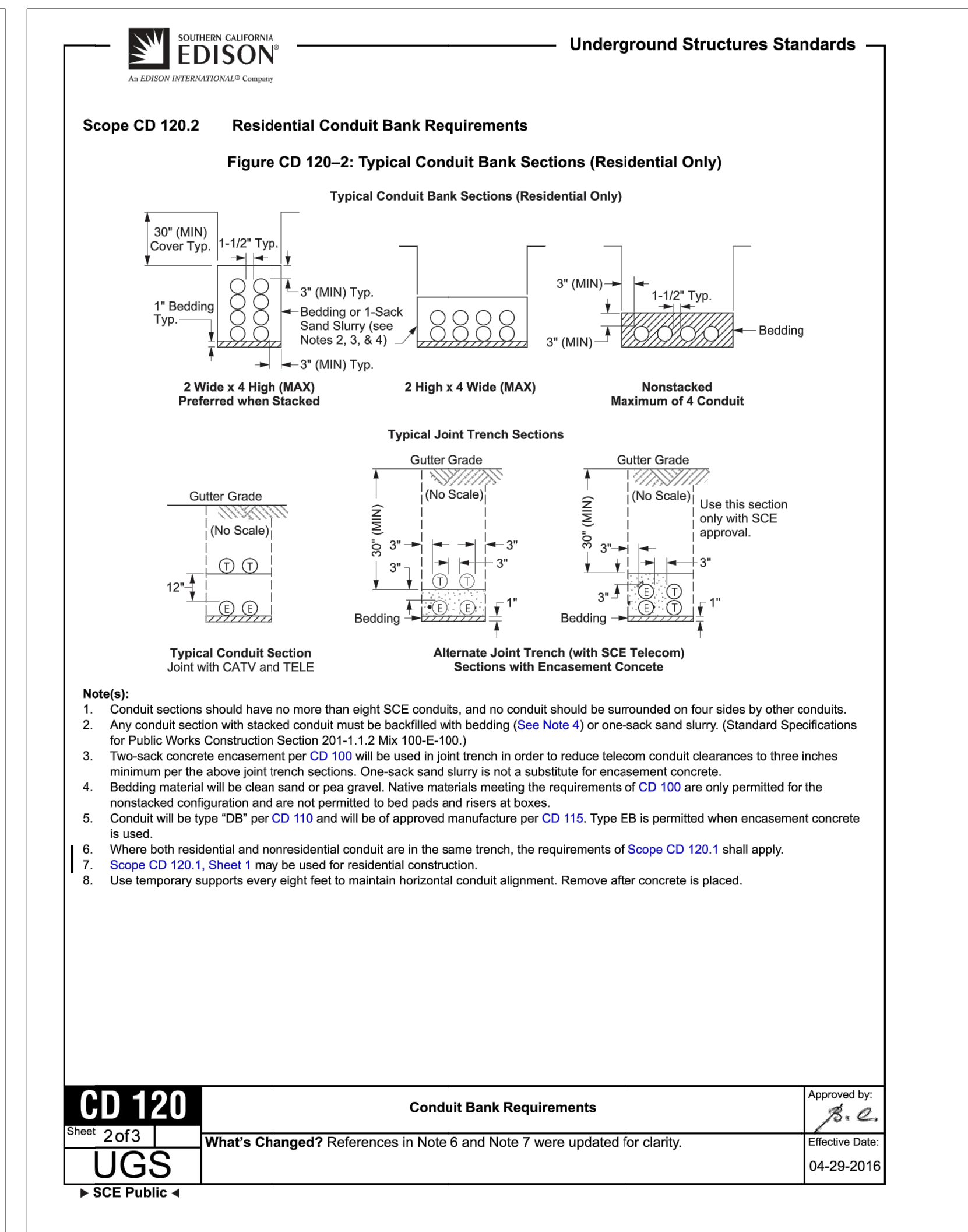
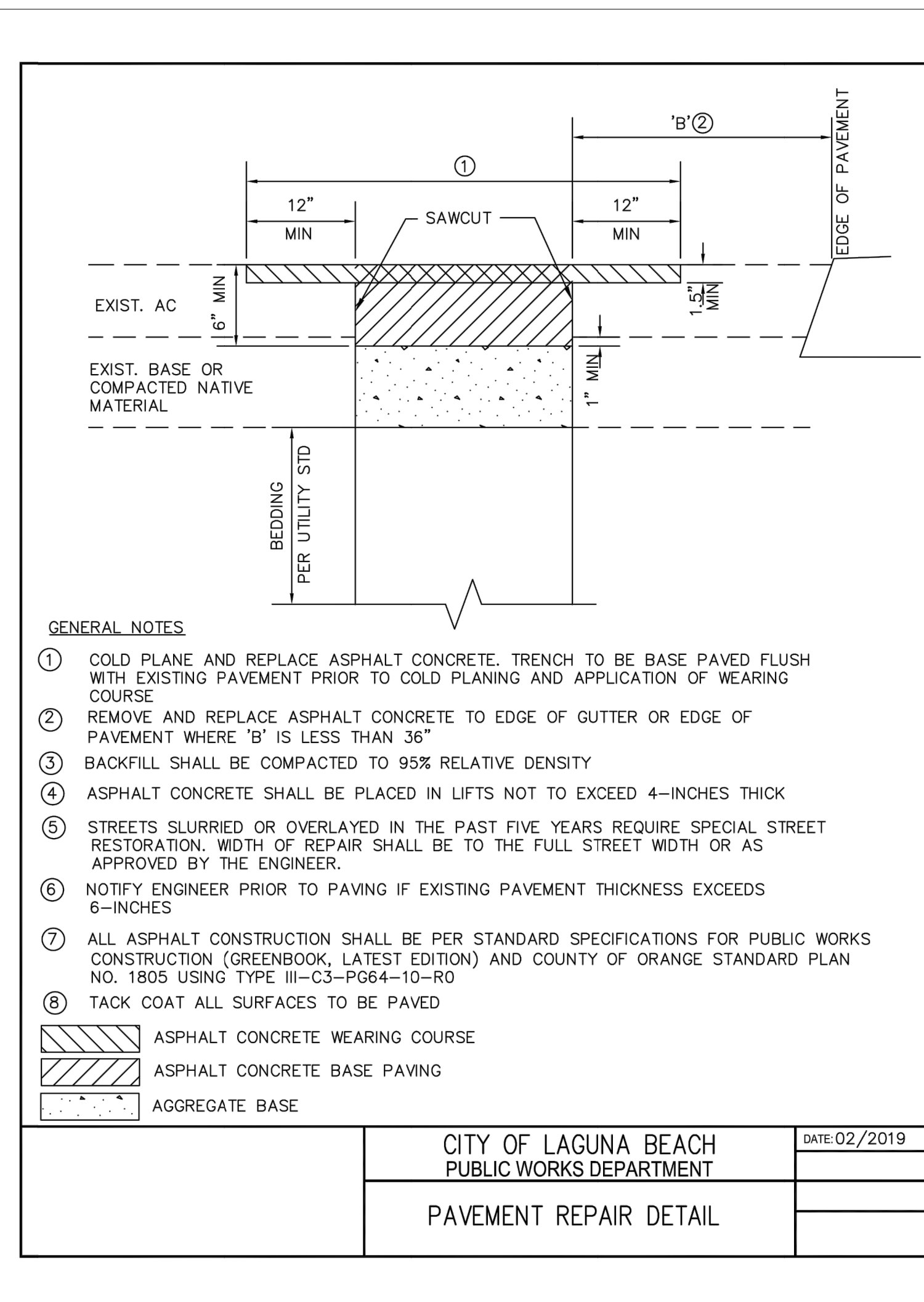
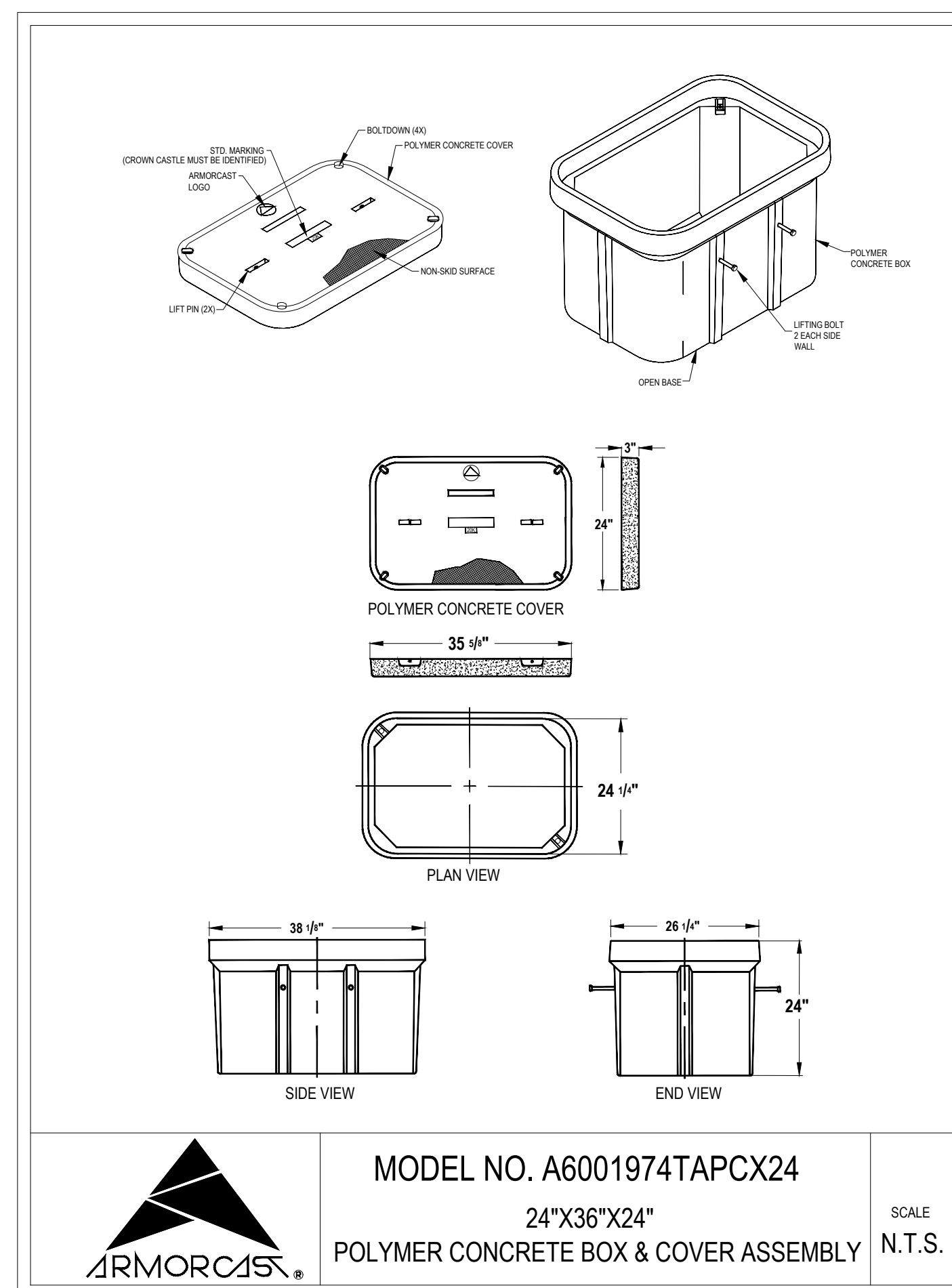
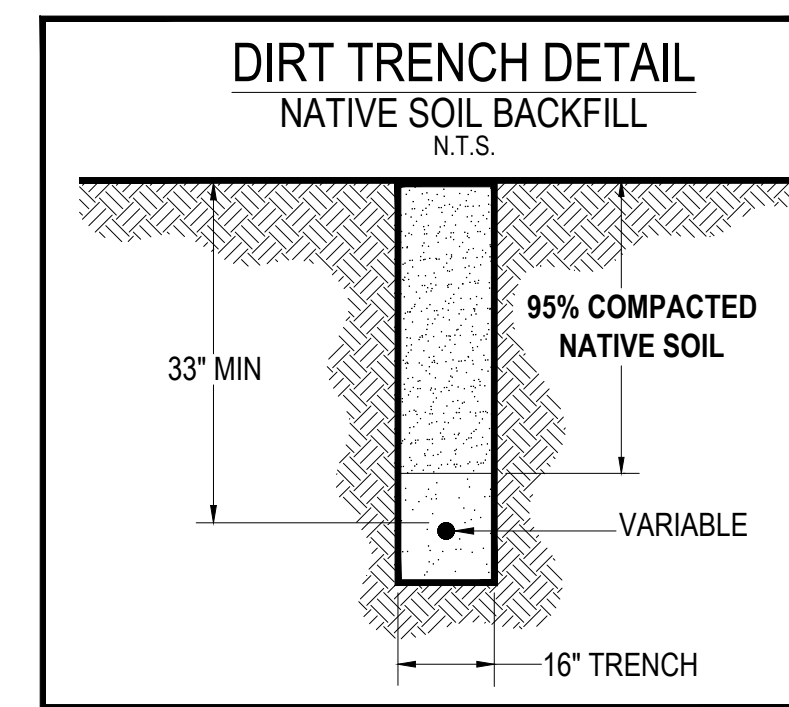
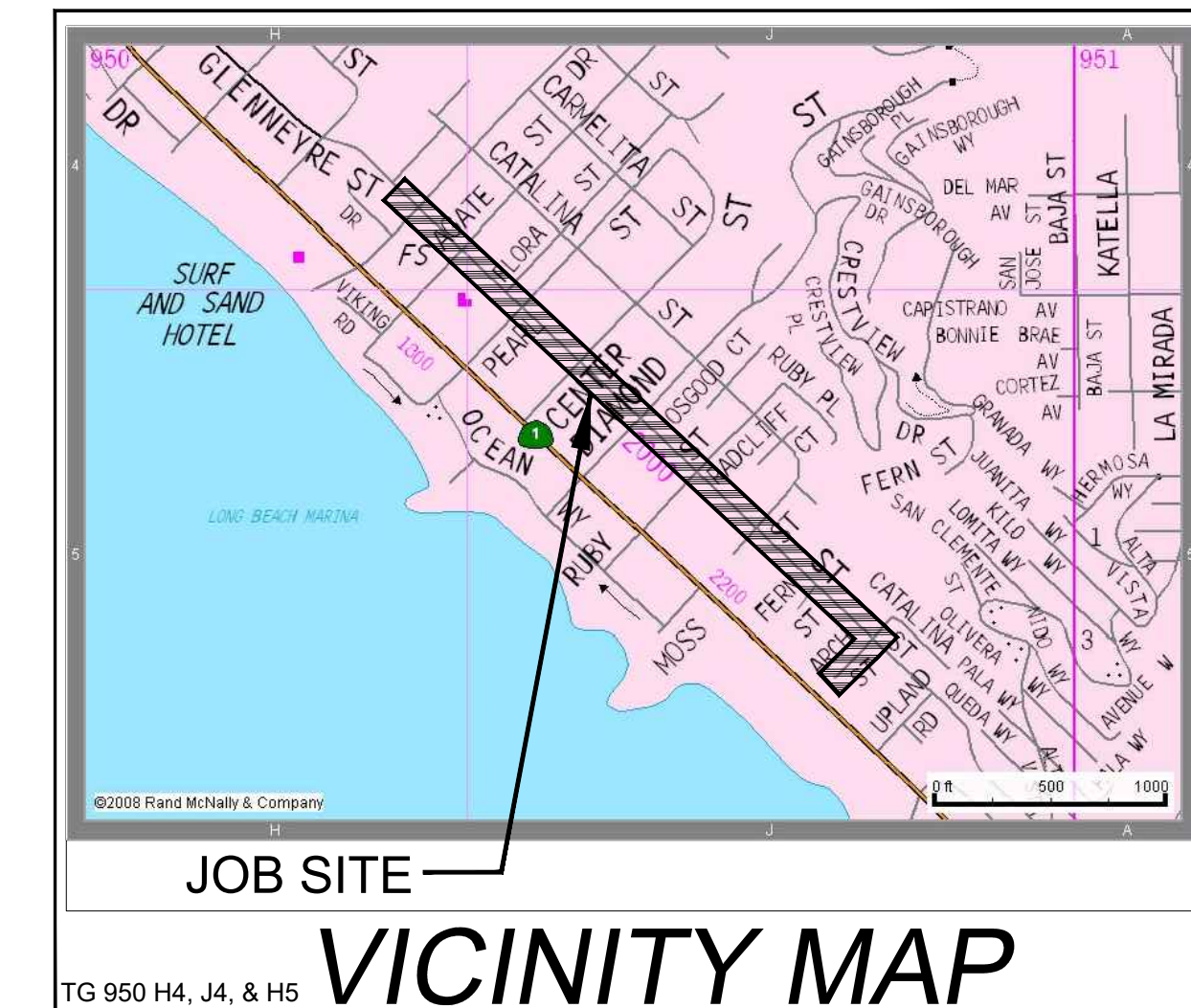
GENERAL NOTES:

- ALL WORK SHALL CONFORM TO THE "STANDARD PLANS AND SPECIFICATIONS FOR PUBLIC WORKS CONSTRUCTION" (GREENBOOK), LATEST EDITION, INCLUDING SUPPLEMENTS, ORANGE COUNTY RESOURCES & DEVELOPMENT MANAGEMENT DEPARTMENT (OC RDMD) AND TO THE CALTRANS STANDARD PLANS AND SPECIFICATIONS, 2006 EDITION.
- NO WORK SHALL BE DONE WITHOUT APPROVAL FROM THE CITY ENGINEER.
- THE CONTRACTOR SHALL IMPLEMENT ALL CITY, COUNTY, STATE, AND FEDERAL JOB SITE SAFETY REQUIREMENTS AS THEY RELATE TO DUST CONTROL, EQUIPMENT MOVEMENT, NOISE, HOURS OF WORK AND CONSTRUCTION HAZARDOUS MATERIALS AND SHALL MINIMIZE ANY INCONVENIENCE TO THE PUBLIC.
- THE CONTRACTOR SHALL NOT CONDUCT ANY NOISY OPERATIONS OR WORK PERTAINING TO THE PROJECT BETWEEN THE HOURS OF 6:00 PM AND 7:30 AM MONDAY THRU FRIDAY, NOR ANYTIME SATURDAY, SUNDAY, OR ANY HOLIDAY WITHOUT PRIOR APPROVAL BY THE CITY ENGINEER.
- THE CONTRACTOR SHALL BE RESPONSIBLE FOR THE COST OF CLEANING AND HAULING ANY HAZARDOUS AND DETRIMENTAL MATERIAL, DISCOVERED DURING AND AFTER THE WORK, FROM THE SITE.
- THESE NOTES SHALL TAKE PRECEDENCE OVER THE INFORMATION APPEARING ON THE PLANS.
- THE LOCATION OF A CONSTRUCTION WATER METER IS AVAILABLE FROM THE LAGUNA BEACH COUNTY WATER DISTRICT, LOCATED AT 306 THIRD STREET, LAGUNA BEACH, CA 92651. THE CONTRACTOR IS RESPONSIBLE FOR THE COST OF THE WATER.
- IT SHALL BE THE RESPONSIBILITY OF THE CONTRACTOR TO CLEAR THE RIGHT OF WAY IN ACCORDANCE WITH THE PROVISIONS OF THE LAW AS IT AFFECTS EACH UTILITY INCLUDING IRRIGATION LINES AND APPURTENANCES AND AT NO COST TO THE CITY.
- CONTRACTOR SHALL VERIFY THE LOCATIONS OF THE UNDERGROUND UTILITY LINE OR STRUCTURES WHETHER SHOWN OR NOT SHOWN ON THIS PLAN, AND SHALL BE RESPONSIBLE FOR PROTECTING THEM FROM DAMAGE. THE CONTRACTOR SHALL CALL UNDERGROUND SERVICE ALERT (USA), 1-800-227-2600, A MINIMUM OF TWO WORKING DAYS BEFORE DIGGING.
- ANY CONTRACTOR WORKING WITHIN THE PUBLIC RIGHT OF WAY IS SUBJECT TO THE LICENSING AND INSURANCE REQUIREMENTS OF THE CITY.
- THE CONTRACTOR SHALL TAKE ALL NECESSARY AND PROPER PRECAUTIONS TO PROTECT ADJACENT PROPERTIES FROM ANY DAMAGE THAT MAY OCCUR FROM STORM WATER RUNOFF, DEPOSIT OF WATER RUNOFF, DEBRIS RESULTING FROM ANY CONSTRUCTION WORK.
- TREES, FOLIAGE, SIGNS, AND OTHER IMPROVEMENTS SHALL BE PROTECTED IN PLACE, UNLESS OTHERWISE NOTED, AND ANY DAMAGE TO THE EXISTING IMPROVEMENTS SHALL BE REPAIRED OR REPLACED IN KIND TO THE SATISFACTION OF THE CITY ENGINEER.
- IT SHALL BE THE RESPONSIBILITY OF THE CONTRACTOR TO LOCATE ALL SUBSTRUCTURES WITHIN THE ALIGNMENT OF THE PROPOSED IMPROVEMENTS, AND IN THE EVENT OF SUBSTRUCTURE DAMAGE, THE CONTRACTOR SHALL BEAT THE TOTAL COST OF REPAIR OR REPLACEMENT.
- IF ANY UTILITIES OR FACILITIES CONFLICT WITH PROPOSED IMPROVEMENTS, ALL WORK SHALL STOP, AND THE CITY ENGINEER SHALL BE NOTIFIED IMMEDIATELY.
- THE CONTRACTOR IS ADVISED THAT ALL EXCAVATED MATERIALS SHALL BECOME HIS PROPERTY AND SHALL BE REMOVED FROM THE JOB SITE UNLESS INSTRUCTED BY THE CITY ENGINEER, IN WRITING, TO DO OTHERWISE.
- NO TRENCHES, REGARDLESS OF DEPTH OR WIDTH AND WHETHER ON-SITE OR OFF-SITE, MAY BE LEFT OPEN OVERNIGHT UNLESS PRIOR APPROVAL IS SECURED, IN WRITING, FROM THE CITY ENGINEER.
- TRENCHES DEEPER THAN 5'-0" WILL FOLLOW CAL-OSHA REQUIREMENTS.
- THE CONTRACTOR SHALL BE RESPONSIBLE DURING ALL PHASES OF THE WORK TO PROVIDE FOR PUBLIC SAFETY AND CONVENIENCE. THE CONTRACTOR SHALL ESTABLISH ADEQUATE ACCESS TO DRIVEWAYS AT THE END OF EACH WORKING DAY TO THE SATISFACTION OF THE CITY ENGINEER.
- THE CONTRACTOR SHALL PROVIDE A 72-HOUR NOTIFICATION TO THE AFFECTED PROPERTIES, THE POLICE DEPARTMENT, STREETS DIVISION (SWEEPING), AND THE FIRE DEPARTMENT IN THE EVENT OF A CHANGE IN THE STREET CLOSURE TO TRAFFIC AND/OR PUBLIC SAFETY VEHICLES, PARKING RESTRICTIONS, AND ON EACH MONDAY DURING THE CONSTRUCTION PERIOD.
- ALL PORTLAND CEMENT CONCRETE (PCC) AND ASPHALTIC (AC) SHALL BE SAWCUT TO A NEAT CLEAN EDGE.
- ALL TRAFFIC CONTROL DEVICES, SIGNS, MARKINGS, TEMPORARY STRIPING MARKERS SHALL BE IN PLACE PRIOR TO THE PAVING PER TRAFFIC CONTROL PLANS
- THE CONTRACTOR SHALL ADJUST ALL MANHOLE AND VALVE COVERS TO FINISHED GRADE, AS NOTED ON THE PLANS.
- AS REQUIRED BY THE CITY ENGINEER, THE CONTRACTOR SHALL FURNISH AND OPERATE A SELF-LOADING MOTOR SWEEPER WITH SPRAY NOZZLES AT LEAST TWICE WORKING DAY TO KEEP PAVED AREAS ACCEPTABLY CLEAN WHEREVER CONSTRUCTION, INCLUDING RESTORATION, IS COMPLETE.
- THE CONTRACTOR SHALL COMPLY WITH THESE REQUIREMENTS AND THE CITY ENGINEER'S DIRECTIONS DURING THE COURSE OF CONSTRUCTION.

TOTAL EXCAVATION: 2,847'		
BORE	0	LF
ASPHALT TRENCH	2,588	LF
DIRT TRENCH	259	LF
S/W R&R	0	SF
BORE PITS (PAVEMENT)	0	
POTHLES (PAVEMENT)	0	

CONTRACTOR NOTICE:
THE EXISTENCE AND LOCATION OF ANY UNDERGROUND UTILITY PIPES OR STRUCTURES SHOWN ON THESE PLANS WERE OBTAINED BY FIELD INSPECTION AND A SEARCH OF THE AVAILABLE CITY OR COUNTY RECORDS. SINCE THE ACTUAL LOCATION AND NATURE OF THE UNDERGROUND FACILITIES MAY BE SOMEWHAT DIFFERENT FROM THAT SHOWN, THE CONTRACTOR IS REQUIRED TO VERIFY THE INFORMATION THROUGH UNDERGROUND SERVICE ALERT (USA) OR BY CONTACTING THE UTILITY COMPANIES DIRECTLY, PRIOR TO EXCAVATION.

CROWN CASTLE FIBER LLC (LAGUNA BEACH RULE 20) INSTALLATION OF FIBER OPTIC CONDUIT GLENNEYRE ST. & ARCH ST.



PROPOSED WORK		EXISTING STRUCTURES		MISC.	
SYMBOL/LINETYPE	ABBREV. DESCRIPTION	SYMBOL	ABBREV. DESCRIPTION	SYMBOL/LINETYPE	ABBREV. DESCRIPTION
[Symbol]	CONCRETE REPLACEMENT	[Symbol]	POLE	[Symbol]	C/L CENTER LINE
[Symbol]	ASPHALT RESURFACE / OPEN TRENCH	[Symbol]	UTILITY POLE	[Symbol]	R/W RIGHT OF WAY
[Symbol]	PROPOSED TRENCH	[Symbol]	MANHOLE	[Symbol]	EOP EDGE OF PAVEMENT
[Symbol]	PROPOSED BORE	[Symbol]	HH HAND HOLE	[Symbol]	FOC FRONT OF CURB
[Symbol]	HDD SETBACK	[Symbol]	PEDESTAL	[Symbol]	P/L PROPERTY LINE
[Symbol]	BORE PIT DIRT / ASPHALT (3'X6')	[Symbol]	F/H FIRE HYDRANT	[Symbol]	C&G CURB & GUTTER
[Symbol]	POT HOLE ASPHALT (2'X2')	[Symbol]	VLV VALVE	[Symbol]	R/R RAILROAD
[Symbol]	EXPOSE UTILITY	[Symbol]	TS TRAFFIC SIGNAL	[Symbol]	
[Symbol]	PROPOSED UNDERGROUND ENCLOSURE (SEE DETAIL)	[Symbol]	SL STREET LIGHT	[Symbol]	
[Symbol]	PLACE (INSTALL NEW)	[Symbol]	VENT	[Symbol]	
[Symbol]	R&R - REMOVE & REPLACE	[Symbol]	MTR METER	[Symbol]	
[Symbol]		[Symbol]	TREE	[Symbol]	

DESIGNED BY.....

 290 CORPORATE TERRACE CIRCLE
 STE. 200, GORDON, CA 92627
 WWW.KBENG.NET
 TEL. 951-808-9501
 FAX. 951-808-9518

PLAN REVISIONS:	
REV #	DESCRIPTION

EXCAVATION PLAN

APPLICANT: **CROWN CASTLE FIBER**

AGENCY/CITY: **CITY OF LAGUNA BEACH**

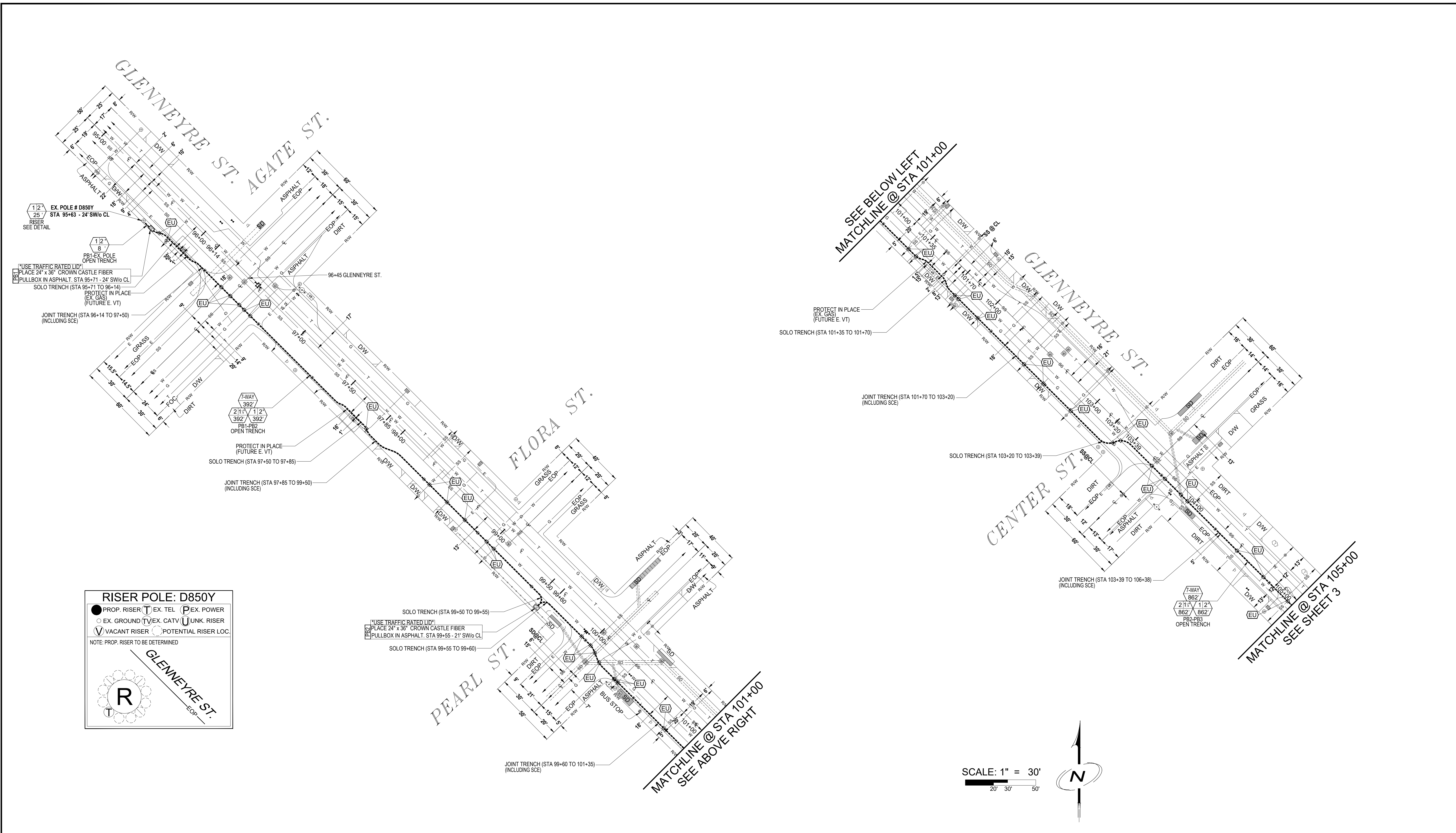
PERMIT TRACKING NUMBER: **635-LGBR20-B01-LGB**

LOCATION: **GLENNEYRE ST. & ARCH ST.**

DATE: 1-21-21
 DRAWN: RC
 DATE: 1/27/21
 CHECKED BY: KB
 DATE: 2/9/21

PHONE NO. 8-1-1

PLOTTED: 5/17/22 BY: DANIEL SOLORZANO



1/2" EX. POLE # D850Y
25'
RISER
SEE DETAIL

1/2" 8'
PB1-EX. POLE
OPEN TRENCH

USE TRAFFIC RATED LID!
PLACE 24" x 36" GROWN CASTLE FIBER
PULLBOX IN ASPHALT. STA 95-71 - 24' SW/O CL
SOLO TRENCH (STA 95-71 TO 96-14)
PROTECT IN PLACE
(EX. GAS)
(FUTURE E. VT)

JOINT TRENCH (STA 96-14 TO 97+50)
(INCLUDING SCE)

7-WAY
392
392
PB1-PB2
OPEN TRENCH

PROTECT IN PLACE
(FUTURE E. VT)

SOLO TRENCH (STA 97+50 TO 97+85)
(INCLUDING SCE)

JOINT TRENCH (STA 97+85 TO 99+50)
(INCLUDING SCE)

USE TRAFFIC RATED LID!
PLACE 24" x 36" GROWN CASTLE FIBER
PULLBOX IN ASPHALT. STA 99+55 - 21' SW/O CL

SOLO TRENCH (STA 99+50 TO 99+55)
(INCLUDING SCE)

SOLO TRENCH (STA 99+55 TO 99+60)
(INCLUDING SCE)

7-WAY
392
392
PB1-PB2
OPEN TRENCH

PROTECT IN PLACE
(FUTURE E. VT)

SOLO TRENCH (STA 97+50 TO 97+85)
(INCLUDING SCE)

JOINT TRENCH (STA 97+85 TO 99+50)
(INCLUDING SCE)

PROTECT IN PLACE
(EX. GAS)
(FUTURE E. VT)

SOLO TRENCH (STA 101+35 TO 101+70)
(INCLUDING SCE)

JOINT TRENCH (STA 101+70 TO 103+20)
(INCLUDING SCE)

SOLO TRENCH (STA 103+20 TO 103+39)
(INCLUDING SCE)

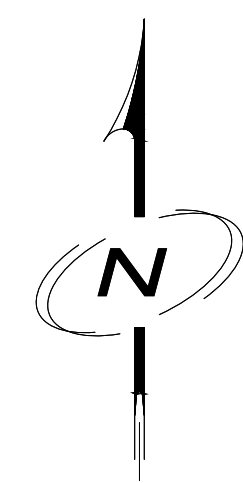
JOINT TRENCH (STA 103+39 TO 106+38)
(INCLUDING SCE)

RISER POLE: D850Y

● PROP. RISER (T) EX. TEL. (P) EX. POWER
○ EX. GROUND (V) EX. CATV (U) UNK. RISER
▽ VACANT RISER (O) POTENTIAL RISER LOC.

NOTE: PROP. RISER TO BE DETERMINED

SCALE: 1" = 30'



PROPOSED WORK		EXISTING STRUCTURES		MISC.	
SYMBOL/LINETYPE	ABBREV. DESCRIPTION	SYMBOL	ABBREV. DESCRIPTION	SYMBOL/LINETYPE	ABBREV. DESCRIPTION
	CONCRETE REPLACEMENT		POLE		U/G TRANSFORMER
	ASPHALT RESURFACE / OPEN TRENCH		MANHOLE		STREET SIGN
	PROPOSED TRENCH		HAND HOLE		GROUND HAND HOLE
	PROPOSED BORE		PEDESTAL		PARKING METER
	HDD SETBACK		FIRE HYDRANT		RAILROAD SIGNAL
	BORE PIT DIRT / ASPHALT (3'X6')		VALVE		SANITARY SEWER
	POTHOLE ASPHALT (2'X2')		TRAFFIC SIGNAL		WATER
	EXPOSE UTILITY		STREET LIGHT		CATV
	PROPOSED UNDERGROUND ENCLOSURE (SEE DETAIL)		VENT		TRAFFIC CONDUIT
	PLACE (INSTALL NEW)		METER		FIBER OPTIC CONDUIT
	R&R - REMOVE & REPLACE		TREE		UNKNOWN CONDUIT

DESIGNED BY.....

290 CORPORATE TERRACE CIRCLE
STE. 200, GORDON, CA 92875

WWW.KBENG.NET

TEL. 951-808-9501
FAX. 951-808-9518

PLAN REVISIONS:

REV #	DATE	DESCRIPTION	INT

DIGALERT
CALL TOLL FREE
48 HOURS BEFORE YOU DIG
UNDERGROUND SERVICE ALERT
PHONE NO. 8-1-1

EXCAVATION PLAN

APPLICANT: CROWN CASTLE FIBER

AGENCY/CITY: CITY OF LAGUNA BEACH

PERMIT TRACKING NUMBER: 635-LBR20-B01-LGB

LOCATION: GLENNEYRE ST. & ARCH ST.

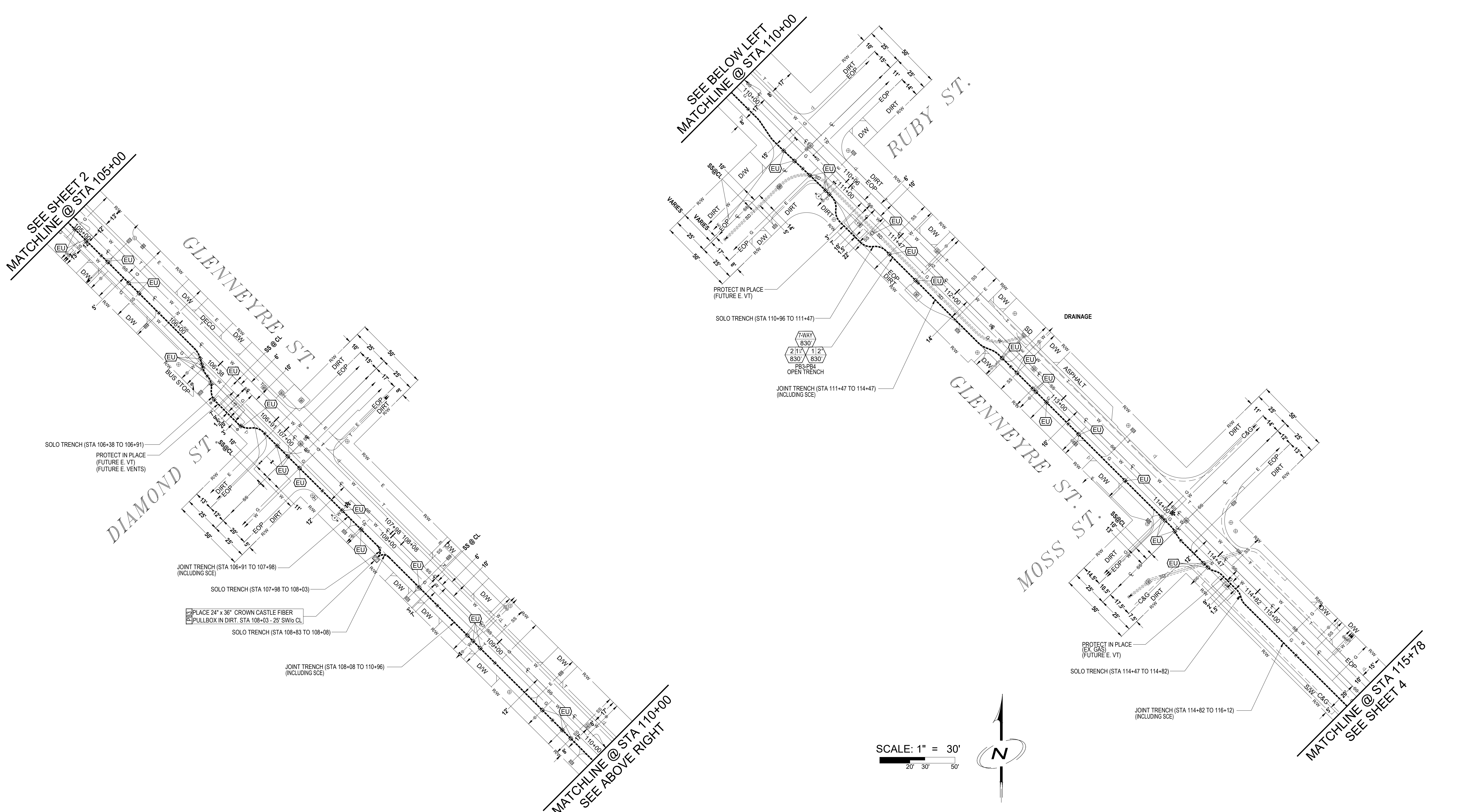
SYSTEM MAP # - DATE: 1-21-21 RC

DRAWER: DATE: 1-27-21 KB

NOTE: 2/9/21

SHEET: 2 OF 4

PLOTTED: 5/17/22 BY: DANIEL SOLORZANO



SCALE: 1" = 30'

PROPOSED WORK				EXISTING STRUCTURES				MISC.						
SYMBOL/LINETYPE	ABBREV.	DESCRIPTION		SYMBOL	ABBREV.	DESCRIPTION		SYMBOL/LINETYPE	ABBREV.	DESCRIPTION		SYMBOL/LINETYPE	ABBREV.	DESCRIPTION
[Symbol]		CONCRETE REPLACEMENT		[Symbol]	POLE	UTILITY POLE		[Symbol]	U/G TRANSFORMER	SLC	STREET LIGHT CONDUIT	[Symbol]	C/L	CENTER LINE
[Symbol]		ASPHALT RESURFACE / OPEN TRENCH		[Symbol]	MH	MANHOLE		[Symbol]	STREET SIGN	E	ELECTRIC	[Symbol]	R/W	RIGHT OF WAY
[Symbol]		PROPOSED TRENCH		[Symbol]	HH	HAND HOLE		[Symbol]	GROUND HAND HOLE	T	TELEPHONE	[Symbol]	EOP	EDGE OF PAVEMENT
[Symbol]		PROPOSED BORE		[Symbol]	PED	PEDESTAL		[Symbol]	PARKING METER	G	GAS	[Symbol]	FOC	FRONT OF CURB
[Symbol]		HDD SETBACK		[Symbol]	F/H	FIRE HYDRANT		[Symbol]	RAILROAD SIGNAL	SD	STORM DRAIN	[Symbol]	P/L	PROPERTY LINE
[Symbol]	BP	BORE PIT DIRT / ASPHALT (3'X6')		[Symbol]	VLV	VALVE		[Symbol]	RAILROAD GATE ARM	SS	SANITARY SEWER	[Symbol]	C&G	CURB & GUTTER
[Symbol]	PH	POTHOLE ASPHALT (2'X2')		[Symbol]	TS	TRAFFIC SIGNAL		[Symbol]	GUY WIRE / ANCHOR	W	WATER	[Symbol]	R/R	RAILROAD
[Symbol]	EU	EXPOSE UTILITY		[Symbol]	SL	STREET LIGHT		[Symbol]	FIRE DEPT CONNECTION	TV	CATV	[Symbol]		
[Symbol]	PB	PROPOSED UNDERGROUND ENCLOSURE (SEE DETAIL)		[Symbol]	VENT	VENT		[Symbol]	VAULT	TC	TRAFFIC CONDUIT	[Symbol]		
[Symbol]	PL	PLACE (INSTALL NEW)		[Symbol]	MTR	METER		[Symbol]		FO	FIBER OPTIC CONDUIT	[Symbol]		
[Symbol]		R&R - REMOVE & REPLACE		[Symbol]				[Symbol]		UNK	UNKNOWN CONDUIT	[Symbol]		

DESIGNED BY.....

290 CORPORATE TERRACE CIRCLE
STE. 200, GORDON, CA 92675
WWW.KBENG.NET
TEL. 951-808-9501
FAX. 951-808-9518

PLAN REVISIONS:

REV #	DATE	DESCRIPTION	INT

DIGALERT
CALL TOLL FREE
48 HOURS BEFORE YOU DIG
UNDERGROUND SERVICE ALERT
PHONE NO. 8-1-1

EXCAVATION PLAN

APPLICANT: **CROWN CASTLE FIBER**

AGENCY/CITY: **CITY OF LAGUNA BEACH**

PERMIT TRACKING NUMBER: **635-LBR20-B01-LGB**

LOCATION: **GLENNEYRE ST. & ARCH ST.**

SYSTEM MAP # - DATE: 1-21-21 | DRAFTER: RC | DATE: 1-27-21 | DATE: 2/9/21 | SHEET: 3 OF 4

PLOTTED: 5/17/22 BY: DANIEL SOLORZANO

SEE SHEET 3
MATCHLINE @ STA 115+78

SEE BELOW LEFT
MATCHLINE @ STA 12+57

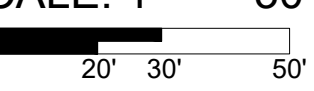
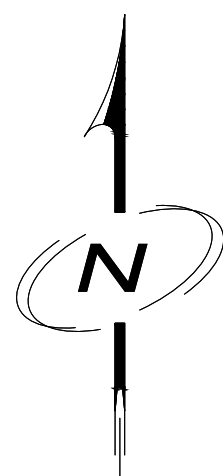
MATCHLINE @ STA 12+57
SEE ABOVE RIGHT

SOLO TRENCH (STA 116+12 TO 116+17)
SOLO TRENCH (STA 116+17 TO 116+22)
[USE TRAFFIC RATED LID]
PLACE 24" x 36" CROWN CASTLE FIBER
PULLBOX IN ASPHALT, STA 116+17 - 25' SW to CL

JOINT TRENCH (STA 11+17 TO 12+92) (INCLUDING SCE)
SOLO TRENCH (STA 10+88 TO 11+17)

REF DWG: PER SEPARATE PERMIT
COAST HWY UNDERGROUND UTILITY DISTRICT (2019-4)
TIE INTO EXISTING CROWN CASTLE FIBER
PULLBOX IN DIRT, STA 10+88 - 14' SE to CL

SCALE: 1" = 30'



PROPOSED WORK		EXISTING STRUCTURES		MISC.	
SYMBOL/LINETYPE	ABBREV. DESCRIPTION	SYMBOL	ABBREV. DESCRIPTION	SYMBOL/LINETYPE	ABBREV. DESCRIPTION
[Symbol]	CONCRETE REPLACEMENT	[Symbol]	UTILITY POLE	[Symbol]	SLC STREET LIGHT CONDUIT
[Symbol]	ASPHALT RESURFACE / OPEN TRENCH	[Symbol]	MANHOLE	[Symbol]	E ELECTRIC
[Symbol]	PROPOSED TRENCH	[Symbol]	HH HAND HOLE	[Symbol]	T TELEPHONE
[Symbol]	PROPOSED BORE	[Symbol]	PED PEDESTAL	[Symbol]	G GAS
[Symbol]	HDD SETBACK	[Symbol]	F/H FIRE HYDRANT	[Symbol]	SD STORM DRAIN
[Symbol]	BORE PIT DIRT / ASPHALT (3'X6')	[Symbol]	VLV VALVE	[Symbol]	SS SANITARY SEWER
[Symbol]	POTHOLE ASPHALT (2'X2')	[Symbol]	TS TRAFFIC SIGNAL	[Symbol]	W WATER
[Symbol]	EXPOSE UTILITY	[Symbol]	SL STREET LIGHT	[Symbol]	TV CATV
[Symbol]	PROPOSED UNDERGROUND ENCLOSURE (SEE DETAIL)	[Symbol]	VENT	[Symbol]	TC TRAFFIC CONDUIT
[Symbol]	PLACE (INSTALL NEW)	[Symbol]	MTR METER	[Symbol]	FO FIBER OPTIC CONDUIT
[Symbol]	R&R - REMOVE & REPLACE	[Symbol]	TREE	[Symbol]	UNK UNKNOWN CONDUIT

DESIGNED BY.....

290 CORPORATE TERRACE CIRCLE
STE. 200, GORDON, CA 92875
WWW.KBENG.NET
TEL. 951-808-9501
FAX. 951-808-9518

PLAN REVISIONS:

REV #	DATE	DESCRIPTION	INT

DIGALERT
CALL TOLL FREE
48 HOURS BEFORE YOU DIG
UNDERGROUND SERVICE ALERT
PHONE NO. 8-1-1

EXCAVATION PLAN

APPLICANT: CROWN CASTLE FIBER

AGENCY/CITY: CITY OF LAGUNA BEACH

PERMIT TRACKING NUMBER: 635-LBR20-B01-LGB

LOCATION: GLENNEYRE ST. & ARCH ST.

SYSTEM MAP # - DATE: 1-21-21 RC

DRAWER: DATE: 1-27-21 KB

DATE: 2/9/21

SHEET: 4 OF 4

PLOTTED: 5/17/22 BY: DANIEL SOLORZANO