

UTILITY DETAILS



SIGNATURE PEDESTAL HOUSING (SPH™) SERIES

Designed for dual trunk amplifiers
and fiber node locations.

SPH 2436

SPECIFICATIONS

Dimensions: 24" x 36" x 21" (610mm x 914mm x 533mm)
(cover interior dimensions)
24" x 36" x 18" (610mm x 914mm x 457mm)
(base interior dimensions)

Shipping: 1 per carton, 4 per pallet
Weight: 120 lbs (54.5 kg) carton

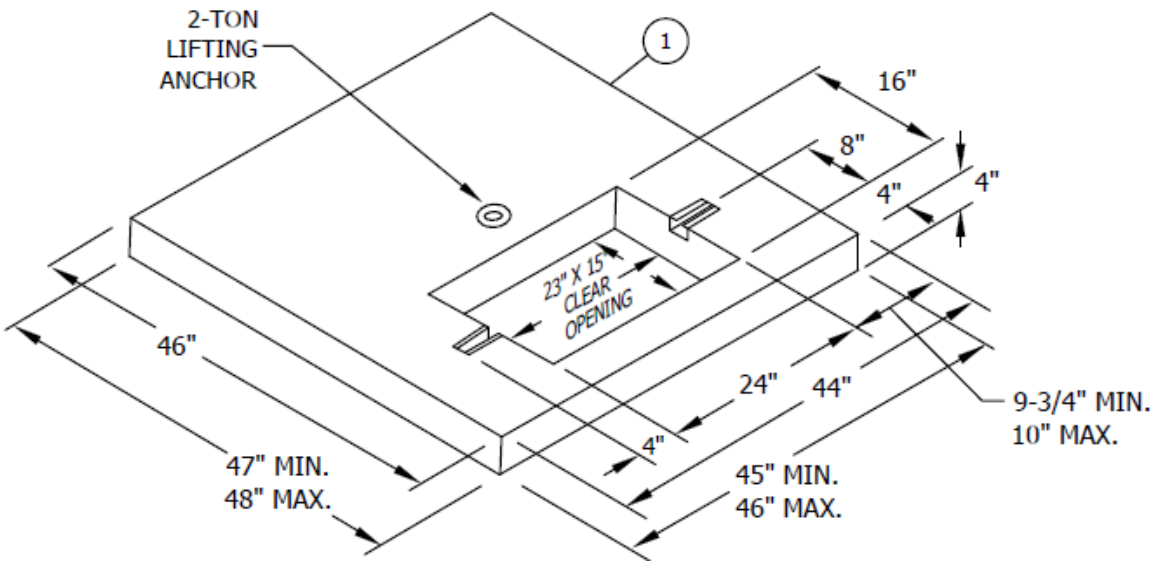


**24" X 36" X 21" COX LOWBOY PEDESTAL
(LIGHT GREEN COLOR)**



UG 3421 PAD

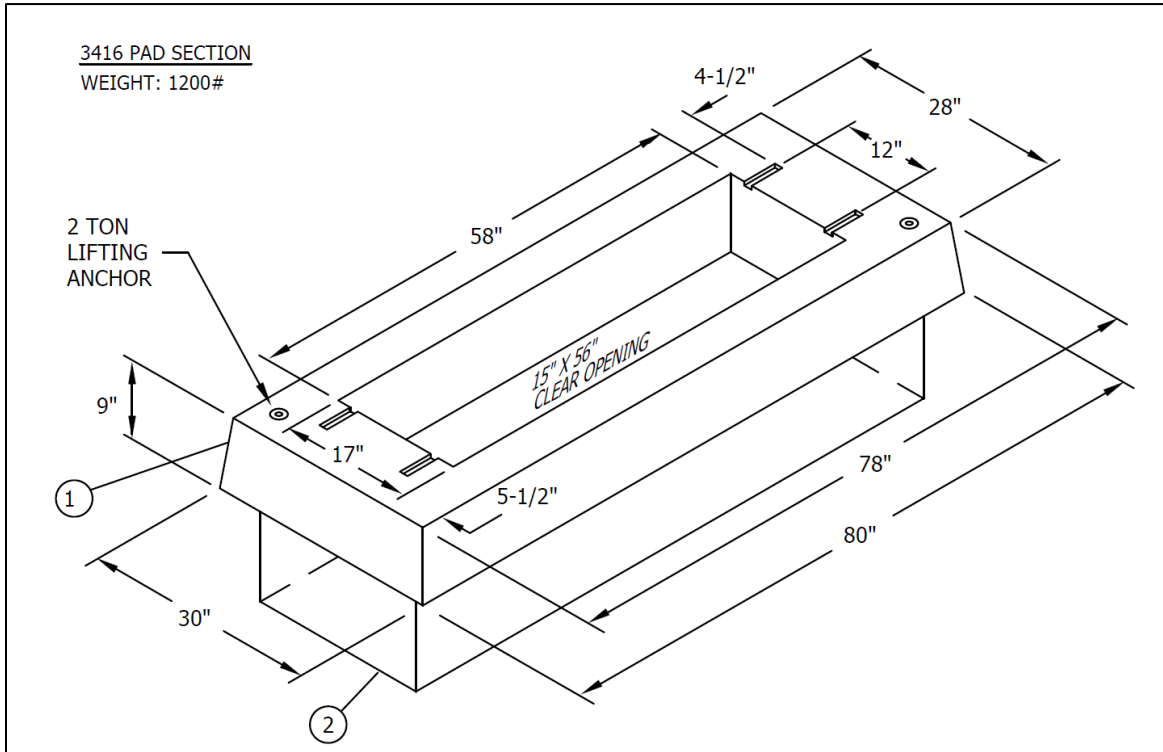
PAD WEIGHT: 619LBS. MAX.



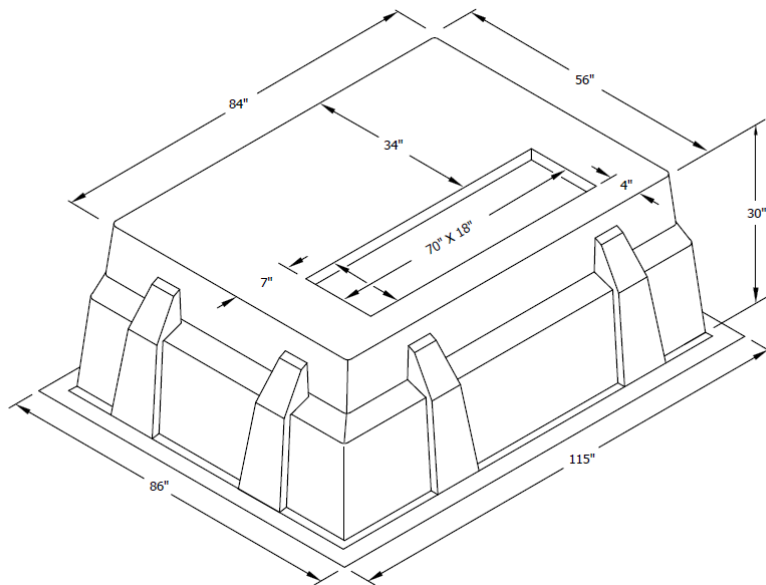
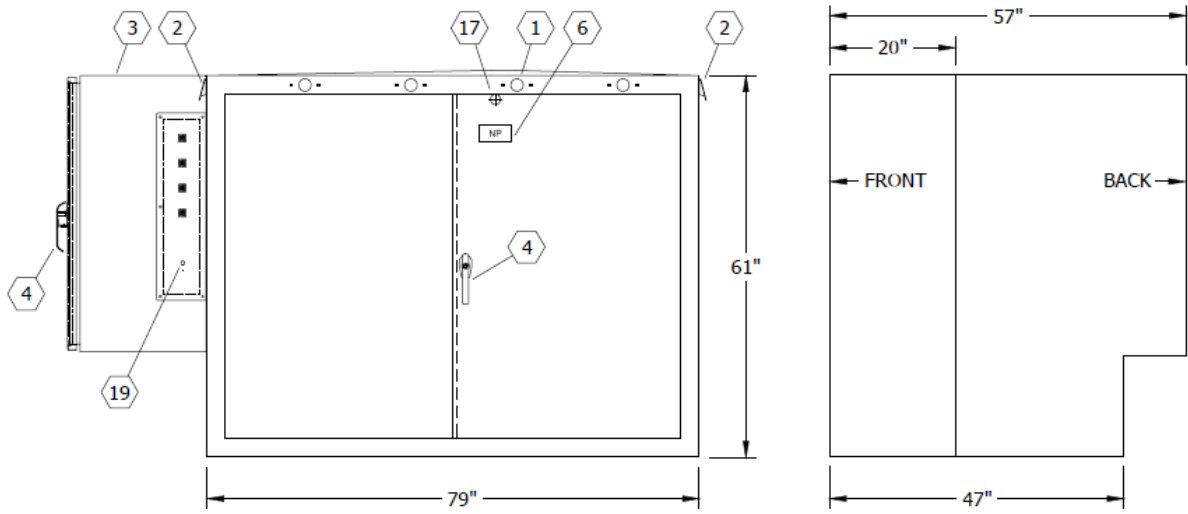
SDGE PAD-MOUNTED TRANSFORMER
 36" X 33" X 26" CABINET (DARK GREEN FINISH)
 48" X 46" CONCRETE PAD



4' HIGH RETAINING WALL ENCLOSURE
8" CONCRETE MASONRY BLOCKS
(SANDSTONE COLOR)



SDGE TERMINATOR CABINET
66" X 22" X 33" (DARK GREEN FINISH)
80" X 30" CONCRETE PAD



**4-WAY SDGE SCADA SWITCH CABINET
 102" x 57" x 61" (DARK GREEN FINISH)
 115" X 86" CONCRETE PAD**

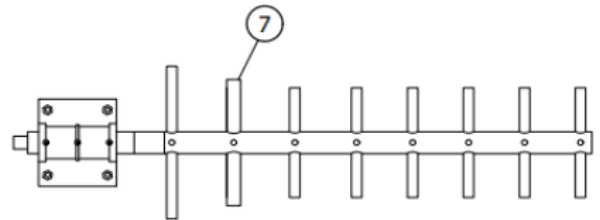
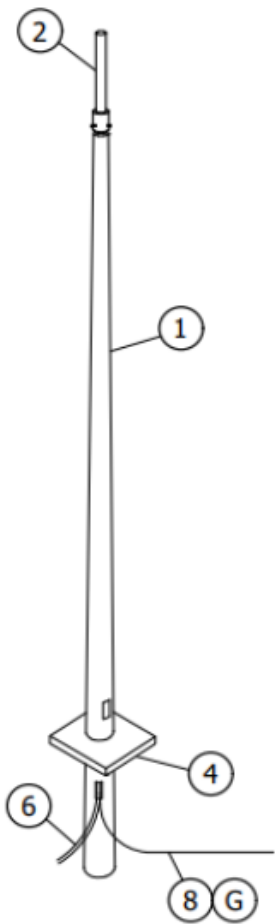
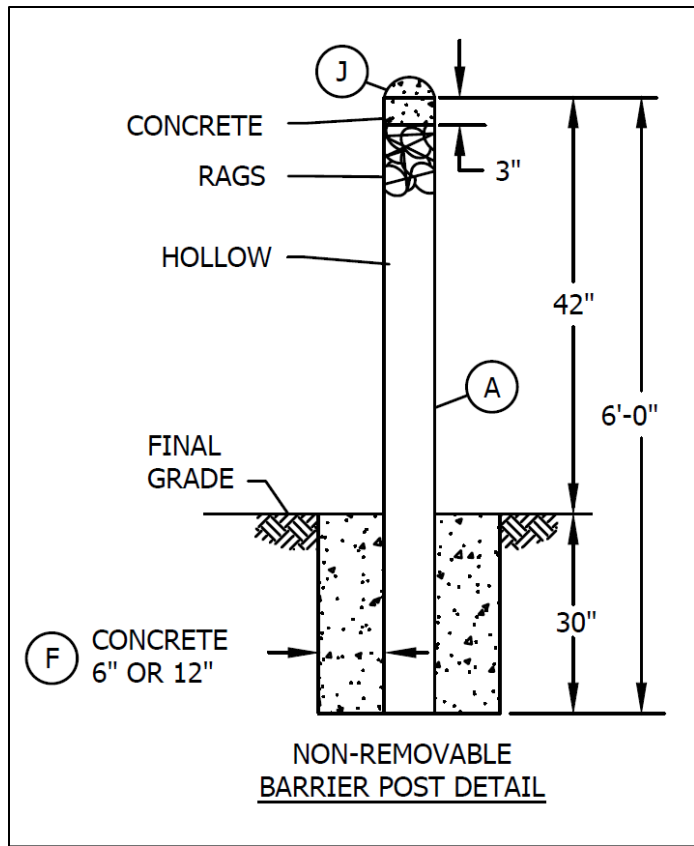


FIGURE 4



**SDGE SCADA FIBERGLASS ANTENNA POLE
20' POLE HEIGHT (BROWN COLOR)**



42" HIGH STEEL BOLLARD
(PAINTED WHITE FINISH)



**SAMPLE RISER POLE W/ GUY ANCHORS
(LENGTHS OF ANCHORS VARY)**