

OH REMOVAL
ON TD1782375

SINGLE LINE LEGEND
 CIRCUIT 1 = AGATE 12KV o/o MORRO SUB
 CIRCUIT 2 = ACRES 12KV o/o MORRO SUB

**AGATE 12KV
O/O MORRO SUB
EXISTING SINGLE LINE**

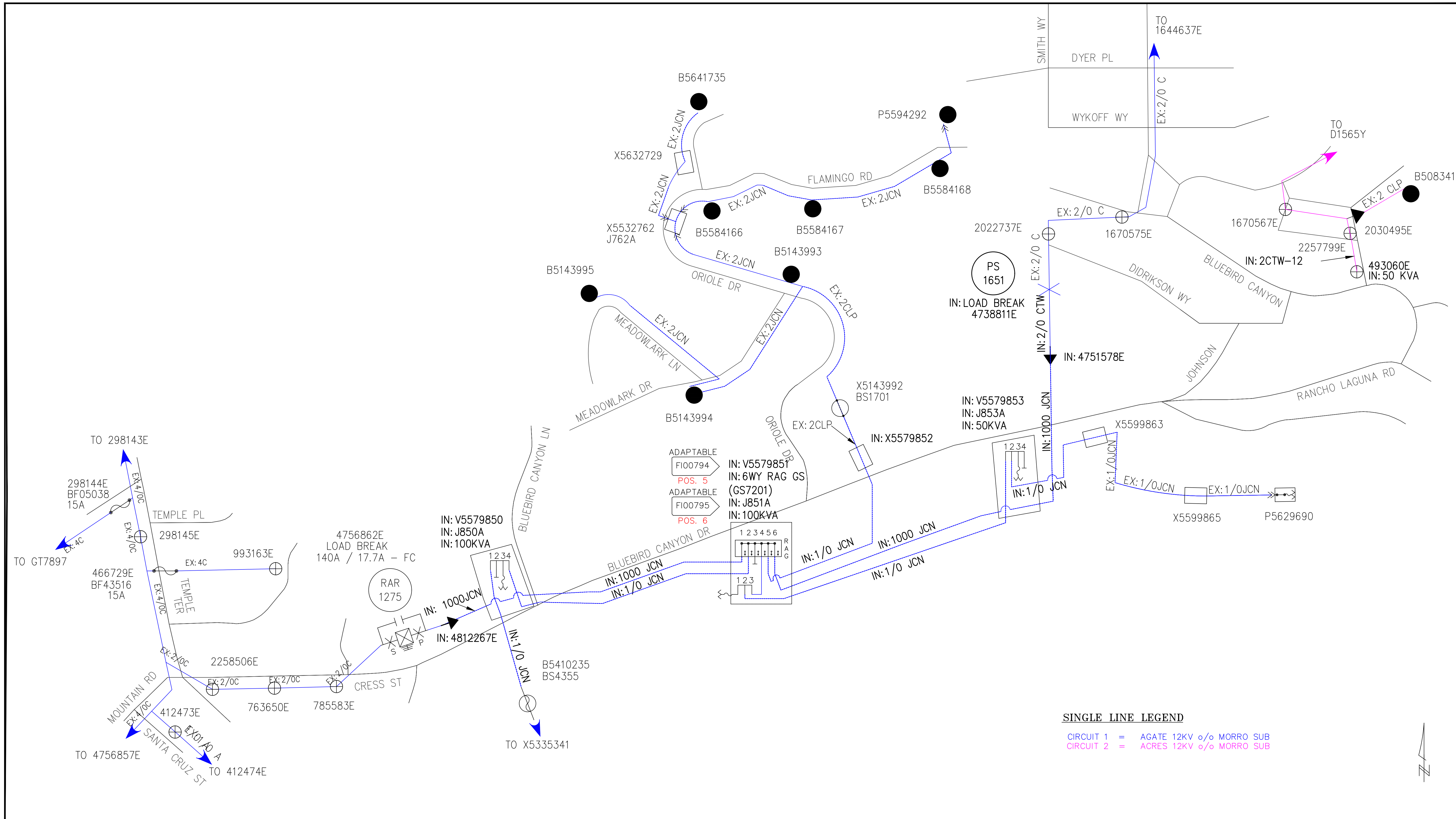
FINAL DESIGN
APPROVED FOR CONSTRUCTION

UNDERGROUND SERVICE ALERT
 Contact USA
 Dial 811 or 800-422-4133
 www.digalert.org/contact
 For Underground Locating
 Two Working Days Before You Dig
 016 Rev. 05/28/20

DATE	REVISION DESCRIPTION	APPROVED	DRAWN	CHECKED
03/21/23	ADDED DUCTS & CAPS FOR FUTURE STREET LIGHT WORK ORDERS	SLS	JLOW	JFS
08/30/22	UPDATE LBCWD TRENCH LOCATION	SS	CV	JS
07/25/22	EASEMENT CHANGES - LBCWD		CV	JS
04/26/22	CHANGE ORDER - MOVED LBCWD TRENCH LOCATION		CV	JS
04/01/22	LBCWD TRENCH RELOCATION		CV	JS
01/31/22	REVISED MANHOLE LOCATION		CV	JS
01/27/22	ADDED LBCWD DRAIN LINES TO DWG		CV	JS
04/30/21	CONVERSION TO AUD 2020		RW	TT

DISTRICT A3 - SADDLEBACK		PROJ. MGR. PEARCE, TODD B. PHONE 714-973-5637	PLANNER SPENCER, JAMES PHONE 714-796-9910	DESIGNER VIBBERT, CORY HAYES
PROJECT NO. 2096779	SERVICE REQUEST 2993069	MSR NO.	PRODUCT-1 1782378-RULE 20A-UG INSTALL	ASSOC. DESIGN 1342765
CIRCUIT / VOLTAGE AGATE 12KV	GPS	PRODUCT-2 1782375-RULE 20A-OH REMOVAL	ASSOC. DESIGN 1342763	
SUB / PG. NO. MORRO SUB	CIRCUIT CODE 00115	PRODUCT-3		
GRID MAP	SEE ABOVE	I.P.A. NO.	PROPOSED CONSTRUCTION (LOCATION) RULE 20A - AGATE 12KV % MORRO BLUEBIRD CANYON LAGUNA BEACH CA 92651	
F 08/30/22	S/E/SS	S/E/SS	S/E/CV	
F 12/23/21	S/E/SS	S/E/EZ	S/E/SS/CV	
P 08/04/21		EZ	IS	
B 04/29/21		RW/QUES/IT	QUES/EX	
TYPE	DATE	APPROVED BY	CHECKED BY	DRAWN BY
Southern California Edison Company				SHEET 1A of 7
				DESIGN/DRWG NO. 1342765_2.01

FILE NAME: I:\MORRO_2.DWG, SAVE DATE: 3/27/2023 12:31 PM, SAVED BY: LHM



**AGATE 12KV
O/O MORRO SUB
PROPOSED SINGLE LINE**

**FINAL DESIGN
APPROVED FOR CONSTRUCTION**

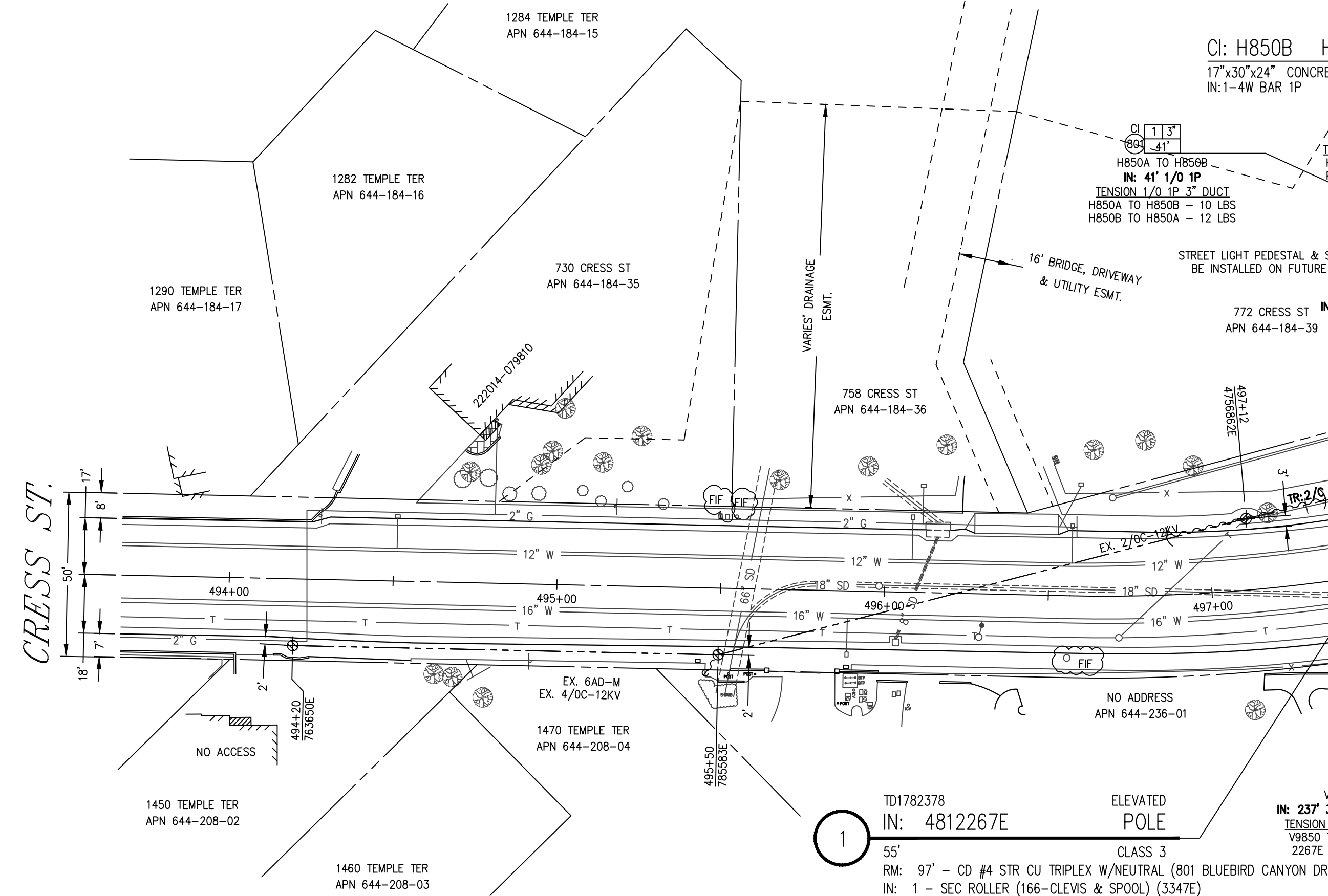
UNDERGROUND SERVICE ALERT
Contact USA
Dial 811 or 800-422-4133
www.digalert.org/contact
For Underground Locating
Two Working Days Before You Dig
016 Rev. 05/28/20

DATE	REVISION DESCRIPTION	APPROVED	DRAWN	CHECKED
03/21/23	ADDED DUCTS & CAPS FOR FUTURE STREET LIGHT WORK ORDERS	SLS	JLOW	JFS
08/30/22	UPDATE LBCWD TRENCH LOCATION	SS	CV	JS
07/25/22	EASEMENT CHANGES - LBCWD		CV	JS
04/26/22	CHANGE ORDER - MOVED LBCWD TRENCH LOCATION		CV	JS
04/01/22	LBCWD TRENCH RELOCATION		CV	JS
01/31/22	REVISED MANHOLE LOCATION		CV	JS
01/27/22	ADDED LBCWD DRAIN LINES TO DWG		CV	JS
04/30/21	CONVERSION TO AUD 2020		RW	TT

DISTRICT A3 - SADDLEBACK		PROJ. MGR. PEARCE, TODD B. PHONE 714-973-5637	PLANNER SPENCER, JAMES PHONE 714-796-9910	DESIGNER VIBBERT, CORY HAYES
PROJECT NO. 2096779	SERVICE REQUEST 12993069	MSR NO. 1782378	PRODUCT-1 RULE 20A-UG INSTALL	ASSOC. DESIGN 1342765
CIRCUIT / VOLTAGE AGATE 12KV	GPS	PRODUCT-2 1782375	PRODUCT-3 RULE 20A-OH REMOVAL	ASSOC. DESIGN 1342763
SUB / PG. NO. MORRO SUB	CIRCUIT CODE 00115	PROPOSED CONSTRUCTION (LOCATION) RULE 20A - AGATE 12KV % MORRO BLUEBIRD CANYON LAGUNA BEACH CA 92651		
GRID MAP SEE ABOVE	I.P.A. NO.	DATE	APPROVED BY	CHECKED BY
		08/30/22		
		12/23/21		
		08/04/21		
		04/29/21		
TYPE	DATE	APPROVED BY	CHECKED BY	DRAWN BY
Southern California Edison Company				SHEET 1B of 7
				DESIGN/DRWG NO. 1342765_2.01

BLUEBIRD CANYON LN. (PRIVATE RD.)
 (MATCH SHEET 7)

BLUEBIRD CANYON STA. 501+00
 MATCH LINE SHEET 3



TD1782378
 IN: 4812267E
 CLASS 3
 RM: 97' - CD #4 STR CU TRIPLEX W/NEUTRAL (801 BLUEBIRD CANYON DR)
 IN: 1 - SEC ROLLER (166-CLEVIS & SPOOL) (3347E)
 IN: 1 - RSR NEUT 3" TO 1" W/4/0 BC (3347E)
 IN: 97' - CD #2 STR CU TRIPLEX W/NEUTRAL (801 BLUEBIRD CANYON DR)
 IN: 1 - POLE 55' CL 3 WD FT /W PROT BARR WF
 IN: 1 - XA DBL HD DE COMP 10' (ATTACH @ 46'6")
 IN: 3 - FE CO MNT FOR ELF 100A 12KV 1-EA (ATTACH AT 46'6")
 IN: 3 - PH CS 10' XA 12KV 3P 3-1000 (ATTACH AT 43'6")
 IN: 1 - SA HFA POLY NON XFMR 12KV (ATTACH AT 43'6")
 IN: 1 - RSR PVC/STRAP 5" UNISTRUT APP
 IN: 3 - INS POLY DE 12KV RIG 2/0 STR
 IN: 6 - INS POLY PIN 12KV VRT VICE NYLON
 IN: 3 - KADDAS WILDLIFE CVD CND DEAD END COVER
 IN: 1 - AG DOWN GUY 3/8"-50' W/1-FGSI ALL KV (ATTACH AT 46")
 IN: 1 - AG ANCHOR ROD 1" X 10' 3-EYE W/PLATE (20' LEAD TO EAST)
 TR: 106' - 2/0 CTW XLHDP INS CABLE 17KV (2266E TO 6862E)

TD1782378
 CR: X5335340 PULL BOX
 2'-6"x4"x3'-6"
 RPM PARKWAY
 CR: 1 - S SPL BOX PB 2'6"x4"x3'6" PKWY RPM TYPE

TD1782378
 EX: B5410235 BURD SW
 4'x4'x4'
 EX: SW UG BS 2WAY (BS4355)
 RM: 3 - JJ DBE W/DE PLG 1/0 200A
 IN: 3 - JJ DBE W/DE PLG 1/0 200A

- CI: 2 - 6" GRADE RINGS
- CI: 2 - 10" POLYETHYLENE STANDPIPES
- RM: 85' - CM DUCT 2" AND UP (X5340 TO 9544E) (RUN 100) (ABND)
- RM: 21' - CM DUCT 5" (X5340 TO B0235) (RUN 101) (ABND)
- RM: 77' - CBL 1/0 AL 3-1/2 17KV CLP PJ (X5340 TO 9544E) (RUN 100)
- RM: 33' - CBL 1/0 AL 3-1/2 17KV CLP PJ (X5340 TO B0235) (RUN 101)
- CI: 1 - S V 7X14'X8" TUB 2 PIECE
- CI: 1 - SS TAX EXCV CST FOR VLT
- IN: 1 - SL CBL RACK COMP 3", 11", 36" FOR VLT/HH
- IN: 1 - TR UG BT MC F DE 100KVA 12KV 120/240 1P SN
- IN: 3 - JJ LB JUNC BAR 4WY 200A 15KV (J850A)
- CI: 780' - CM DUCT 5" (V9850 TO CAP) (RUN 1A)
- CI: 3404' - CM DUCT 5" (V9850 TO V9851) (RUN 9)
- IN: 2553' - CBL 1000 AL 1-1/2 17KV CLP PJ (V9850 TO V9851) (RUN 9)
- MI: 210' - CBL 1000 AL 1-1/2 17KV CLP PJ
- CI: 7 - S HH CONC 17'X30'X24"
- CI: 7 - SS TAX EXCV CST FOR BD/PAD/PB/PME/SB/SOE
- IN: 2 - CNN BAR INS LT DUTY #8-350 1P 6-WAY
- IN: 5 - CNN BAR INS LT DUTY #8-350 1P 4-WAY
- IN: 1 - CNN BAR INS LT DUTY #8-350 1P 8-WAY
- IN: 3 - JJ DBE SPL T-BODY 2-WY 1000 15/25KV 600A
- CI: 295' - CM DUCT 5" (V9850 TO X9855) (RUN 6)
- CI: 145' - CM DUCT 2 1/2" TO 4" (V9850 TO H850G) (RUN 2)
- CI: 3' - CM DUCT 2 1/2" TO 4" (H850G TO 3347E) (RUN 853)
- CI: 48' - CM DUCT FOR EXCAVATION (V9850 TO H850G) (RUN 2)
- CI: 3' - CM DUCT FOR EXCAVATION (H850G TO 3347E) (RUN 853)
- IN: 145' - CBL (2) 350 MCM, (1) 4/0 600V CLP PLEX (V9850 TO H850G) (RUN 2)
- IN: 295' - CBL (2) 700, (1) 350 600V CLP PLEX (V9850 TO H850G) (RUN 6)
- IN: 38' - CBL (2) 350 MCM, (1) 4/0 600V CLP PLEX (H850G TO 3347E) (RUN 853)
- CI: 41' - CM DUCT 2 1/2" TO 4" (H850A TO H850B) (RUN 801)
- CI: 8' - CM DUCT FOR EXCAVATION (H850C TO PANEL) (RUN 804)
- CI: 8' - CM DUCT FOR EXCAVATION (H850E TO PANEL) (RUN 808)
- CI: 9' - CM DUCT FOR EXCAVATION (H850D TO PANEL) (RUN 806)
- IN: 9' - CBL 2-1/0 1-2 AL 3-1/2 600V CLP PLEX (812 BLUEBIRD CANYON DR) (RUN 806)
- IN: 8' - CBL 2-1/0 1-2 AL 3-1/2 600V CLP PLEX (818 BLUEBIRD CANYON DR) (RUN 808)
- IN: 41' - CBL 2-1/0 1-2 AL 3-1/2 600V CLP PLEX (H850A TO H850B) (RUN 801)
- IN: 7' - CBL 2-1/0 1-2 AL 3-1/2 600V CLP PLEX (802 BLUEBIRD CANYON DR) (RUN 802)
- IN: 7' - CBL 2-1/0 1-2 AL 3-1/2 600V CLP PLEX (808 BLUEBIRD CANYON DR) (RUN 804)
- IN: 3 - JJ DE DB RCPT INS W/BALL #2 OR 1/0 200A (J850A POS. 2)
- IN: 1 - JJ DE DB RCPT INS W/BALL #2 OR 1/0 200A (J850A POS. 3)
- IN: 3 - JJ LBE 1/0 200A 12KV (J850A POS. 1)
- IN: 2 - JJ LBE 1/0 200A 12KV (J850A POS. 3)
- IN: 3 - JJ LBE 1/0 200A 12KV (J850A POS. 4)
- IN: 2 - JJ DBE W/DE INS PLG #2 200A (J851 POS. 1)
- CI: 113' - CM DUCT 5" (V9850 TO B0235) (RUN 5)
- CI: 414' - CM DUCT 5" (2267E TO V9850) (RUN 1)
- CI: 12' - CM DUCT FOR EXCAVATION (V9850 TO B0235) (RUN 5)
- CI: 26' - CM DUCT FOR EXCAVATION (2267E TO V9850) (RUN 1)
- CI: 195' - CM DUCT FOR EXCAVATION (V9850 TO CAP) (RUN 1A)
- CI: 851' - CM DUCT FOR EXCAVATION (V9850 TO V9851) (RUN 9)
- IN: 113' - CBL 1/0 AL 3-1/2 17KV CLP PJ (V9850 TO B0235) (RUN 5)
- IN: 711' - CBL 1000 AL 1-1/2 17KV CLP PJ (2267E TO V9850) (RUN 1)
- IN: 851' - CBL 1/0 AL 3-1/2 17KV CLP PJ (V9850 TO V9851) (RUN 9)
- CI: 90' - CM DUCT 2 1/2" TO 4" (V9850 TO H850A) (RUN 3)
- CI: 109' - CM DUCT 2 1/2" TO 4" (V9850 TO H850F) (RUN 4)
- CI: 99' - CM DUCT 2 1/2" TO 4" (H850A TO CAP)
- CI: 14' - CM DUCT FOR EXCAVATION (V9850 TO H850A) (RUN 3)
- CI: 39' - CM DUCT FOR EXCAVATION (V9850 TO H850F) (RUN 4)
- CI: 13' - CM DUCT FOR EXCAVATION (H850A TO CAP)
- IN: 90' - CBL (2) 350 MCM, (1) 4/0 600V CLP PLEX (V9850 TO H850A) (RUN 3)
- IN: 109' - CBL (2) 350 MCM, (1) 4/0 600V CLP PLEX (V9850 TO H850F) (RUN 4)
- MI: 35' - CBL (2) 350 MCM, (1) 4/0 600V CLP PLEX
- CI: 62' - CM DUCT 2 1/2" TO 4" (H850A TO H850C) (RUN 803)
- CI: 62' - CM DUCT 2 1/2" TO 4" (V9850 TO H850E) (RUN 807)
- CI: 93' - CM DUCT 2 1/2" TO 4" (V9850 TO H850D) (RUN 805)
- CI: 62' - CM DUCT FOR EXCAVATION (H850A TO H850C) (RUN 803)
- CI: 47' - CM DUCT FOR EXCAVATION (V9850 TO H850E) (RUN 807)
- CI: 68' - CM DUCT FOR EXCAVATION (V9850 TO H850D) (RUN 805)
- CI: 7' - CM DUCT FOR EXCAVATION (H850B TO PANEL) (RUN 802)
- IN: 62' - CBL 2-1/0 1-2 AL 3-1/2 600V CLP PLEX (H850A TO H850C) (RUN 803)
- IN: 62' - CBL 2-1/0 1-2 AL 3-1/2 600V CLP PLEX (V9850 TO H850E) (RUN 807)
- IN: 93' - CBL 2-1/0 1-2 AL 3-1/2 600V CLP PLEX (V9850 TO H850D) (RUN 805)



SCALE: 1" = 30'

FINAL DESIGN
 APPROVED FOR CONSTRUCTION

WARNING:
 -UNDERGROUND LOCATIONS FOR ELECTRIC, WATER, STORM DRAIN, TELEPHONE & CTV SHOWN ARE APPROXIMATE. POTHOLE FOR EXACT LOCATIONS.

UNDERGROUND SERVICE ALERT
 Contact USA
 Dial 811 or 800-422-4133
 www.dialert.org/contact

SURVEYED
 DATE: 02-11-21

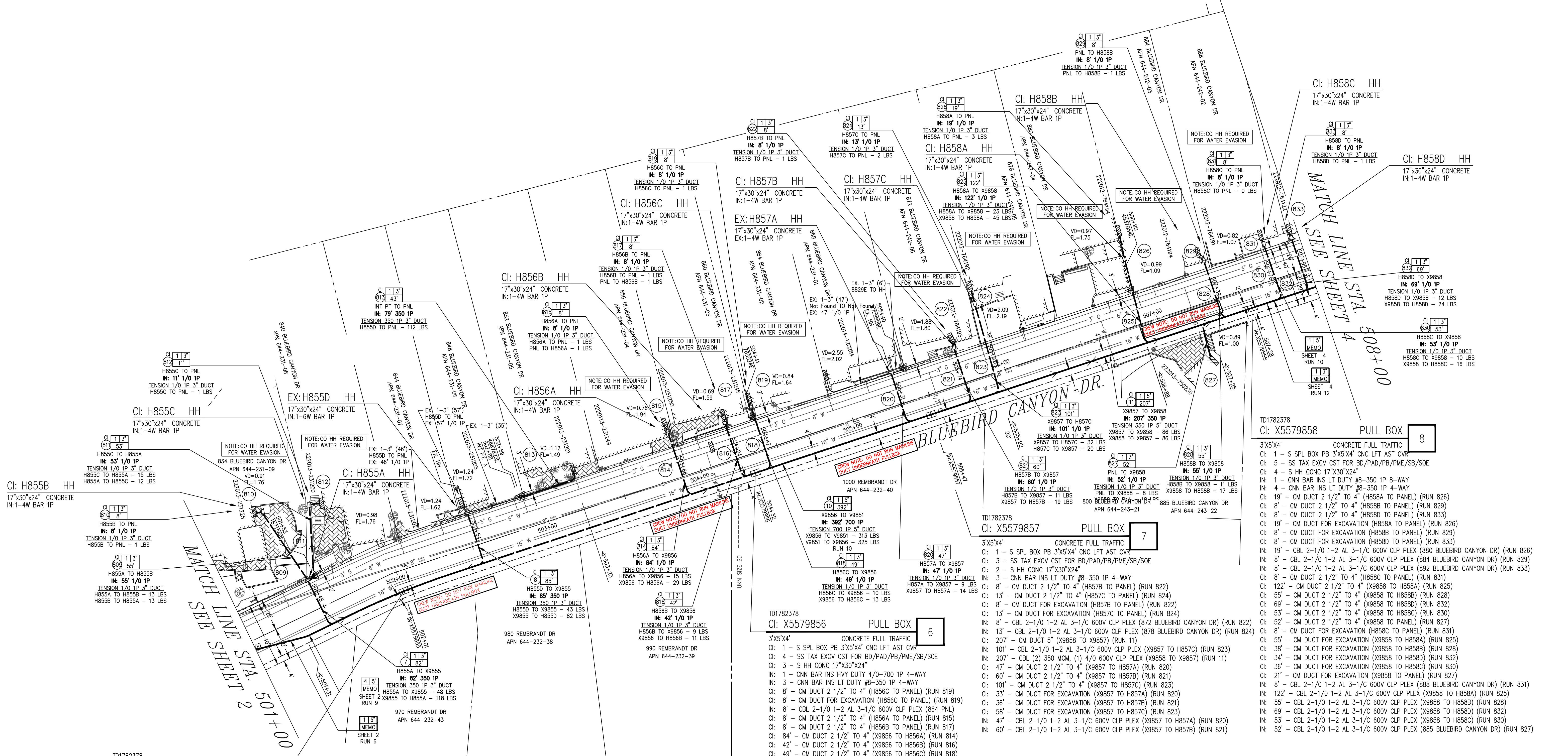
DATE	REVISION DESCRIPTION	APPROVED	DRAWN	CHECKED
03/21/23	ADDED DUCTS & CAPS FOR FUTURE STREET LIGHT WORK ORDERS	SLS	JLW	JFS
08/30/22	UPDATE LBWD TRENCH LOCATION	SS	CV	JS
07/25/22	EASEMENT CHANGES - LBWD		CV	JS
04/26/22	CHANGE ORDER - MOVED LBWD TRENCH LOCATION		CV	JS
04/01/22	LBWD TRENCH RELOCATION		CV	JS
01/31/22	REVISED MANHOLE LOCATION		CV	JS
01/27/22	ADDED LBWD DRAIN LINES TO DWG		CV	JS
04/30/21	CONVERSION TO AID 2020		RW	TT

DISTRICT	PROJECT NO.	SERVICE REQUEST	PRODUCT-1	ASSOC DESGN
43 - SADDLEBACK	2096779	2993069	1782378-RULE 20A-UG INSTALL	1342765
			1782375-RULE 20A-OH REMOVAL	1342763

DATE	APPROVED BY	CHECKED BY	DRAWN BY	PAK #	SHEET	DESIGN/DWG NO.
08/30/22	SS	CV	JS		2 of 7	1342765_2.01

FILE NAME: 1342765_2.DWG SAVE DATE: 07/20/23 12:11 PM SAVED BY: LGW

FILE NAME: I:\PROJECTS\210106.DWG, SAVE DATE: 07/20/2023 12:31 PM, SAVED BY: JLM



- TD1782378
CI: X5579855 PULL BOX 5
- 3'x5'x4' CONCRETE FULL TRAFFIC
- CI: 1 - S SPL BOX PB 3'x5'x4' CNC LFT AST CVR
 - CI: 4 - SS TAX EXCV CST FOR BD/PAD/PB/PME/SB/SOE
 - CI: 3 - S HH CONC 17"x30"x24"
 - IN: 1 - CNN BAR INS LT DUTY #8-350 IP 6-WAY
 - IN: 3 - CNN BAR INS LT DUTY #8-350 IP 4-WAY
 - IN: 79' - CBL (2) 350 MCM, (1) 4/0 600V CLP PLEX (852 BLUEBIRD CANYON DR) (RUN 813)
 - CI: 11' - CM DUCT 2 1/2" TO 4" (H855C TO PANEL) (RUN 812)
 - CI: 55' - CM DUCT 2 1/2" TO 4" (H855A TO H855B) (RUN 809)
 - CI: 11' - CM DUCT FOR EXCAVATION (H855C TO PANEL) (RUN 812)
 - CI: 55' - CM DUCT FOR EXCAVATION (H855A TO H855B) (RUN 809)
 - IN: 11' - CBL 2-1/0 1-2 AL 3-1/1C 600V CLP PLEX (840 BLUEBIRD CANYON DR) (RUN 812)
 - IN: 55' - CBL 2-1/0 1-2 AL 3-1/1C 600V CLP PLEX (H855A TO H855B) (RUN 809)
 - CI: 82' - CM DUCT 2 1/2" TO 4" (X9855 TO H855A) (RUN 7)
 - CI: 85' - CM DUCT 2 1/2" TO 4" (X9855 TO 855D) (RUN 8)
 - CI: 30' - CM DUCT FOR EXCAVATION (X9855 TO H855A) (RUN 7)
 - CI: 32' - CM DUCT FOR EXCAVATION (X9855 TO 855D) (RUN 8)
 - IN: 82' - CBL (2) 350 MCM, (1) 4/0 600V CLP PLEX (X9855 TO H855A) (RUN 7)
 - IN: 85' - CBL (2) 350 MCM, (1) 4/0 600V CLP PLEX (X9855 TO 855D) (RUN 8)
 - CI: 8' - CM DUCT 2 1/2" TO 4" (H855B TO PANEL) (RUN 810)
 - CI: 43' - CM DUCT 2 1/2" TO 4" (H855D TO PANEL) (RUN 813)
 - CI: 53' - CM DUCT 2 1/2" TO 4" (H855A TO H855C) (RUN 811)
 - CI: 8' - CM DUCT FOR EXCAVATION (H855B TO PANEL) (RUN 810)
 - CI: 43' - CM DUCT FOR EXCAVATION (H855D TO PANEL) (RUN 813)
 - CI: 53' - CM DUCT FOR EXCAVATION (H855A TO H855C) (RUN 811)
 - IN: 8' - CBL 2-1/0 1-2 AL 3-1/1C 600V CLP PLEX (834 BLUEBIRD CANYON DR) (RUN 810)
 - IN: 53' - CBL 2-1/0 1-2 AL 3-1/1C 600V CLP PLEX (H855A TO H855C) (RUN 811)

- TD1782378
CI: X5579856 PULL BOX 6
- 3'x5'x4' CONCRETE FULL TRAFFIC
- CI: 1 - S SPL BOX PB 3'x5'x4' CNC LFT AST CVR
 - CI: 4 - SS TAX EXCV CST FOR BD/PAD/PB/PME/SB/SOE
 - CI: 3 - S HH CONC 17"x30"x24"
 - IN: 1 - CNN BAR INS HVY DUTY 4/0-700 IP 4-WAY
 - IN: 3 - CNN BAR INS LT DUTY #8-350 IP 4-WAY
 - IN: 8' - CM DUCT 2 1/2" TO 4" (H856C TO PANEL) (RUN 819)
 - IN: 8' - CBL 2-1/0 1-2 AL 3-1/1C 600V CLP PLEX (864 PNL) (RUN 819)
 - CI: 8' - CM DUCT 2 1/2" TO 4" (H856A TO PANEL) (RUN 815)
 - CI: 8' - CM DUCT 2 1/2" TO 4" (H856B TO PANEL) (RUN 817)
 - CI: 84' - CM DUCT 2 1/2" TO 4" (X9856 TO H856A) (RUN 814)
 - CI: 42' - CM DUCT 2 1/2" TO 4" (X9856 TO H856B) (RUN 816)
 - CI: 49' - CM DUCT 2 1/2" TO 4" (X9856 TO H856C) (RUN 818)
 - CI: 8' - CM DUCT FOR EXCAVATION (H856A TO PANEL) (RUN 815)
 - CI: 8' - CM DUCT FOR EXCAVATION (H856B TO PANEL) (RUN 817)
 - CI: 42' - CM DUCT FOR EXCAVATION (X9856 TO H856A) (RUN 814)
 - CI: 36' - CM DUCT FOR EXCAVATION (X9856 TO H856B) (RUN 816)
 - CI: 41' - CM DUCT FOR EXCAVATION (X9856 TO H856C) (RUN 818)
 - IN: 8' - CBL 2-1/0 1-2 AL 3-1/1C 600V CLP PLEX (856 BLUEBIRD CANYON DR) (RUN 815)
 - IN: 8' - CBL 2-1/0 1-2 AL 3-1/1C 600V CLP PLEX (860 BLUEBIRD CANYON DR) (RUN 817)
 - IN: 84' - CBL 2-1/0 1-2 AL 3-1/1C 600V CLP PLEX (X9856 TO H856A) (RUN 814)
 - IN: 42' - CBL 2-1/0 1-2 AL 3-1/1C 600V CLP PLEX (X9856 TO H856B) (RUN 816)
 - IN: 49' - CBL 2-1/0 1-2 AL 3-1/1C 600V CLP PLEX (X9856 TO H856C) (RUN 818)

- TD1782378
CI: X5579857 PULL BOX 7
- 3'x5'x4' CONCRETE FULL TRAFFIC
- CI: 1 - S SPL BOX PB 3'x5'x4' CNC LFT AST CVR
 - CI: 3 - SS TAX EXCV CST FOR BD/PAD/PB/PME/SB/SOE
 - CI: 2 - S HH CONC 17"x30"x24"
 - IN: 3 - CNN BAR INS LT DUTY #8-350 IP 4-WAY
 - CI: 8' - CM DUCT 2 1/2" TO 4" (H857B TO PANEL) (RUN 822)
 - CI: 13' - CM DUCT 2 1/2" TO 4" (H857C TO PANEL) (RUN 824)
 - CI: 8' - CM DUCT FOR EXCAVATION (H857B TO PANEL) (RUN 822)
 - CI: 13' - CM DUCT FOR EXCAVATION (H857C TO PANEL) (RUN 824)
 - IN: 8' - CBL 2-1/0 1-2 AL 3-1/1C 600V CLP PLEX (872 BLUEBIRD CANYON DR) (RUN 822)
 - IN: 13' - CBL 2-1/0 1-2 AL 3-1/1C 600V CLP PLEX (878 BLUEBIRD CANYON DR) (RUN 824)
 - CI: 207' - CM DUCT 5" (X9857 TO H857C) (RUN 11)
 - IN: 101' - CBL 2-1/0 1-2 AL 3-1/1C 600V CLP PLEX (X9857 TO H857C) (RUN 823)
 - IN: 207' - CBL (2) 350 MCM, (1) 4/0 600V CLP PLEX (X9857 TO H857C) (RUN 11)
 - CI: 47' - CM DUCT 2 1/2" TO 4" (X9857 TO H857B) (RUN 820)
 - CI: 60' - CM DUCT 2 1/2" TO 4" (X9857 TO H857B) (RUN 821)
 - CI: 101' - CM DUCT 2 1/2" TO 4" (X9857 TO H857C) (RUN 823)
 - CI: 33' - CM DUCT FOR EXCAVATION (X9857 TO H857A) (RUN 820)
 - CI: 36' - CM DUCT FOR EXCAVATION (X9857 TO H857B) (RUN 821)
 - IN: 58' - CM DUCT FOR EXCAVATION (X9857 TO H857C) (RUN 823)
 - IN: 47' - CBL 2-1/0 1-2 AL 3-1/1C 600V CLP PLEX (X9857 TO H857A) (RUN 820)
 - IN: 60' - CBL 2-1/0 1-2 AL 3-1/1C 600V CLP PLEX (X9857 TO H857B) (RUN 821)

- TD1782378
CI: X5579858 PULL BOX 8
- 3'x5'x4' CONCRETE FULL TRAFFIC
- CI: 1 - S SPL BOX PB 3'x5'x4' CNC LFT AST CVR
 - CI: 5 - SS TAX EXCV CST FOR BD/PAD/PB/PME/SB/SOE
 - CI: 4 - S HH CONC 17"x30"x24"
 - IN: 1 - CNN BAR INS LT DUTY #8-350 IP 8-WAY
 - IN: 4 - CNN BAR INS LT DUTY #8-350 IP 4-WAY
 - CI: 19' - CM DUCT 2 1/2" TO 4" (H858A TO PANEL) (RUN 826)
 - CI: 8' - CM DUCT 2 1/2" TO 4" (H858B TO PANEL) (RUN 829)
 - CI: 8' - CM DUCT 2 1/2" TO 4" (H858B TO PANEL) (RUN 833)
 - CI: 19' - CM DUCT FOR EXCAVATION (H858A TO PANEL) (RUN 826)
 - CI: 8' - CM DUCT FOR EXCAVATION (H858B TO PANEL) (RUN 829)
 - CI: 8' - CM DUCT FOR EXCAVATION (H858B TO PANEL) (RUN 833)
 - IN: 19' - CBL 2-1/0 1-2 AL 3-1/1C 600V CLP PLEX (880 BLUEBIRD CANYON DR) (RUN 826)
 - IN: 8' - CBL 2-1/0 1-2 AL 3-1/1C 600V CLP PLEX (884 BLUEBIRD CANYON DR) (RUN 829)
 - IN: 8' - CBL 2-1/0 1-2 AL 3-1/1C 600V CLP PLEX (892 BLUEBIRD CANYON DR) (RUN 833)
 - CI: 8' - CM DUCT 2 1/2" TO 4" (H858C TO PANEL) (RUN 831)
 - CI: 122' - CM DUCT 2 1/2" TO 4" (X9858 TO H858A) (RUN 825)
 - CI: 55' - CM DUCT 2 1/2" TO 4" (X9858 TO H858B) (RUN 828)
 - CI: 69' - CM DUCT 2 1/2" TO 4" (X9858 TO H858D) (RUN 832)
 - CI: 53' - CM DUCT 2 1/2" TO 4" (X9858 TO H858C) (RUN 830)
 - CI: 52' - CM DUCT 2 1/2" TO 4" (X9858 TO PANEL) (RUN 827)
 - CI: 8' - CM DUCT FOR EXCAVATION (H858C TO PANEL) (RUN 831)
 - CI: 55' - CM DUCT FOR EXCAVATION (X9858 TO H858A) (RUN 825)
 - CI: 38' - CM DUCT FOR EXCAVATION (X9858 TO H858B) (RUN 828)
 - CI: 34' - CM DUCT FOR EXCAVATION (X9858 TO H858D) (RUN 832)
 - CI: 36' - CM DUCT FOR EXCAVATION (X9858 TO H858C) (RUN 830)
 - CI: 21' - CM DUCT FOR EXCAVATION (X9858 TO PANEL) (RUN 827)
 - IN: 8' - CBL 2-1/0 1-2 AL 3-1/1C 600V CLP PLEX (886 BLUEBIRD CANYON DR) (RUN 831)
 - IN: 122' - CBL 2-1/0 1-2 AL 3-1/1C 600V CLP PLEX (X9858 TO H858A) (RUN 825)
 - IN: 55' - CBL 2-1/0 1-2 AL 3-1/1C 600V CLP PLEX (X9858 TO H858B) (RUN 828)
 - IN: 69' - CBL 2-1/0 1-2 AL 3-1/1C 600V CLP PLEX (X9858 TO H858D) (RUN 832)
 - IN: 53' - CBL 2-1/0 1-2 AL 3-1/1C 600V CLP PLEX (X9858 TO H858C) (RUN 830)
 - IN: 52' - CBL 2-1/0 1-2 AL 3-1/1C 600V CLP PLEX (X9858 TO H858C) (RUN 827)
 - IN: 52' - CBL 2-1/0 1-2 AL 3-1/1C 600V CLP PLEX (885 BLUEBIRD CANYON DR) (RUN 827)

WARNING:
 - UNDERGROUND LOCATIONS FOR ELECTRIC, WATER, STORM DRAIN, TELEPHONE & CATV SHOWN ARE APPROXIMATE. POTHOLE FOR EXACT LOCATIONS.

SURVEYED
 DATE: 02-12-21

UNDERGROUND SERVICE ALERT
 Contact USA
 Dial 811 or 800-422-4133
 www.digalert.org/contact
 For Underground Locating
 Two Working Days Before You Dig
 016: Rev. 05/28/20

DATE	REVISION DESCRIPTION	APPROVED	DRAWN	CHECKED
03/21/23	ADDED DUCTS & CAPS FOR FUTURE STREET LIGHT WORK ORDERS	SLS	JLW	JFS
08/30/22	UPDATE LBCWD TRENCH LOCATION	SS	CV	JS
07/25/22	EASEMENT CHANGES - LBCWD		CV	JS
04/26/22	CHANGE ORDER - MOVED LBCWD TRENCH LOCATION		CV	JS
04/01/22	LBCWD TRENCH RELOCATION		CV	JS
01/31/22	REVISED MANHOLE LOCATION		CV	JS
01/27/22	ADDED LBCWD DRAIN LINES TO DWG		CV	JS
04/30/21	CONVERSION TO AFD 2020	RW	TT	

GRID MAP NO.
 MT-2810-A
 MT-2810-B
 MT-2811-H
 MT-2910-A
 MT-2911-G

DISTRICT: SADDLEBACK
 PROJECT NO.: 2096779
 SERVICE REQUEST: 1782375-RULE 20A-UG INSTALL
 CIRCUIT / VOLTAGE: AGATE 12KV
 SUB / PG NO.: MORRO SUB
 PROJECT CODE: 00115

PROJ. MGR: PEARCE, TODD B.
 PHONE: 714-973-5637

PLANNER: SPENCER, JAMES
 PHONE: 714-796-9910

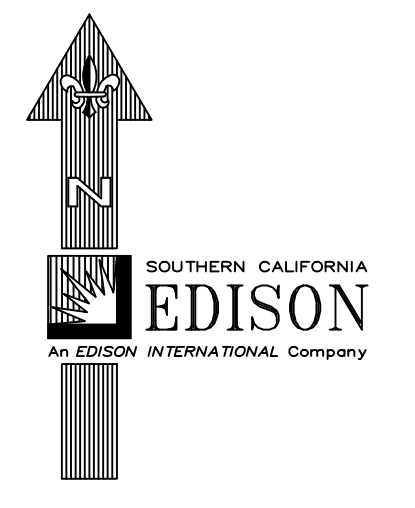
DESIGNER: VIBBERT, CORY HAYES

ASSOC DESIGN: 1342765
 ASSOC DESIGN: 1342763

PROPOSED CONSTRUCTION (LOCATION):
 RULE 20A - AGATE 12KV % MORRO
 BLUEBIRD CANYON
 LAGUNA BEACH CA 92651

TYPE: DATE APPROVED BY CHECKED BY DRAWN BY PAX # SHEET 3 OF 7 DESIGN/DRWG NO. 1342765_2.01

Southern California Edison Company



SCALE: 1" = 30'

FINAL DESIGN
 APPROVED FOR CONSTRUCTION

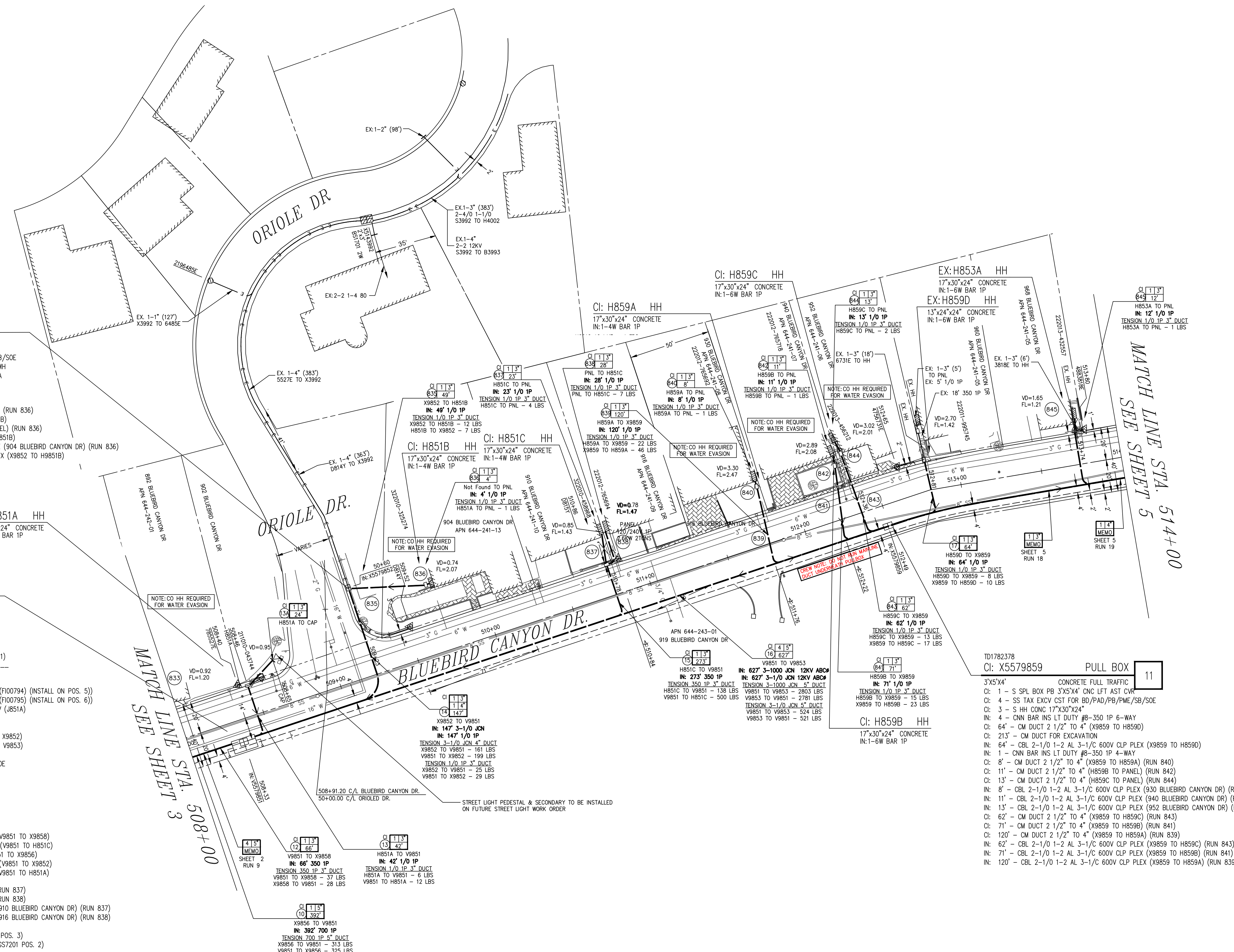
FILE NAME: 1342765_2.DWG DATE: 05/27/2023 10:11 PM SAVED BY: JRM

10 TD1782378
INTERCEPT
CI: X5579852 PULL BOX

- 2'x3'x3' RPM PARKWAY
- CI: 1 - S SPLICE BOX PB 2'x3'x3' PKWY RPM TYPE
- CI: 2 - SS TAX EXCV CST FOR BD/PAD/PB/PME/SB/SOE
- IN: 1 - SL CBL RACK COMP 3", 11", 36" FOR VLT/MH
- IN: 1 - JJ DBE W/T-CNN & INS PLG 2WY 1/0 200A
- CI: 1 - S HH CONC 17"x30"x24"
- IN: 1 - CNN BAR INS LT DUTY #8-350 1P 6-WAY
- IN: 2 - CNN BAR INS LT DUTY #8-350 1P 4-WAY
- CI: 4' - CM DUCT 2 1/2" TO 4" (H851A TO PANEL) (RUN 836)
- CI: 49' - CM DUCT 2 1/2" TO 4" (X9852 TO H851B)
- CI: 8' - CM DUCT FOR EXCAVATION (H851A TO PANEL) (RUN 836)
- CI: 49' - CM DUCT FOR EXCAVATION (X9852 TO H851B)
- IN: 4' - CBL 2-1/0 1-2 AL 3-1/C 600V CLP PLEX (904 BLUEBIRD CANYON DR) (RUN 836)
- IN: 49' - CBL 2-1/0 1-2 AL 3-1/C 600V CLP PLEX (X9852 TO H851B)

9 TD1782378
CI: V5579851 VAULT

- 7'x14'x8' TUB STYLE
- CI: 2 - 6" GRADE RINGS
- CI: 2 - 10" POLYETHYLENE STANDPIPES
- CI: 1 - S V 7'x14'x8' TUB 2 PIECE
- CI: 1 - SS TAX EXCV CST FOR VLT
- IN: 1 - SL CBL RACK COMP 3", 11", 36" FOR VLT/MH
- IN: 1 - SW UG SF6 LB RAG 6-WY 600A 17.5KV (GS7201)
- LINE DEVICE ID:
- IN: 1 - TR UG BT MC F DE 100KVA 12KV 120/240 1P SN:
- IN: 1 - FI UG 3P 200A SELF-ADJ W/3-1 FIBER OPTIC (F100794) (INSTALL ON POS. 5)
- IN: 1 - FI UG 3P 200A SELF-ADJ W/3-1 FIBER OPTIC (F100795) (INSTALL ON POS. 6)
- IN: 1 - JJ LB JUNC BAR 3WY W/3-LBE 1/0 200A 15KV (H851A)
- CI: 2508' - CM DUCT 5" (V9851 TO V9853)
- CI: 833' - CM DUCT FOR EXCAVATION
- IN: 147' - CBL 1/0 AL 3-1/C 17KV CLP PJ (V9851 TO X9852)
- IN: 627' - CBL 1/0 AL 3-1/C 17KV CLP PJ (V9851 TO V9853)
- CI: 2 - S HH CONC 17"x30"x24"
- CI: 2 - SS TAX EXCV CST FOR BD/PAD/PB/PME/SB/SOE
- IN: 1 - CNN BAR INS HVY DUTY 4/0-700 1P 6-WAY
- CI: 273' - CM DUCT 2 1/2" TO 4" (V9851 TO H851C)
- CI: 392' - CM DUCT 5" (V9851 TO X9856)
- CI: 66' - CM DUCT 2 1/2" TO 4" (V9851 TO X9858)
- CI: 294' - CM DUCT 2 1/2" TO 4" (V9851 TO X9852)
- CI: 42' - CM DUCT 2 1/2" TO 4" (V9851 TO H851A)
- CI: 24' - CM DUCT 2 1/2" TO 4" (H851A TO CAP)
- IN: 66' - CBL (2) 350 MCM, (1) 4/0 600V CLP PLEX (V9851 TO X9858)
- IN: 273' - CBL (2) 350 MCM, (1) 4/0 600V CLP PLEX (V9851 TO H851C)
- IN: 392' - CBL (2) 700, (1) 350 600V CLP PLEX (V9851 TO X9856)
- IN: 147' - CBL 2-1/0 1-2 AL 3-1/C 600V CLP PLEX (V9851 TO X9852)
- IN: 42' - CBL 2-1/0 1-2 AL 3-1/C 600V CLP PLEX (V9851 TO H851A)
- IN: 1 - CNN BAR INS LT DUTY #8-350 1P 4-WAY
- CI: 23' - CM DUCT 2 1/2" TO 4" (H851C TO PANEL) (RUN 837)
- CI: 28' - CM DUCT 2 1/2" TO 4" (H851C TO PANEL) (RUN 836)
- IN: 23' - CBL 2-1/0 1-2 AL 3-1/C 600V CLP PLEX (910 BLUEBIRD CANYON DR) (RUN 837)
- IN: 28' - CBL 2-1/0 1-2 AL 3-1/C 600V CLP PLEX (916 BLUEBIRD CANYON DR) (RUN 838)
- IN: 1 - JJ 3-DBE 1000 600A (GS7201 POS. 1)
- IN: 3 - JJ DE DB RPT INS W/TST PNT 600A (GS7201 POS. 3)
- IN: 3 - JJ DB EXT 1/0 600A W/LBE 1/0 200A 15KV (GS7201 POS. 2)
- IN: 1 - JJ 3-DBE 1000 600A (GS7201 POS. 6)
- IN: 3 - JJ DB EXT 1/0 600A W/LBE 1/0 200A 15KV (GS7201 POS. 4)
- IN: 3 - JJ DBE 1/0 600A W/LBE 1/0 200A 15KV (GS7201 POS. 5)
- IN: 6 - JJ BUSHING EXTENSION 600A (GS7201 POS. 3)
- IN: 4 - JJ BUSHING EXTENSION 600A (GS7201 POS. 4)
- IN: 4 - JJ DE DB RPT INS W/TST PNT 600A (GS7201 POS. 4)
- IN: 3 - JJ LBE 1/0 200A 12KV (H851A POS. 3)
- IN: 3 - JJ LBE 1/0 200A 12KV (H851A POS. 2)
- IN: 2 - JJ LBE 1/0 200A 12KV (H851A POS. 1)
- IN: 1881' - CBL 1000 AL 1-1/C 17KV CLP PJ (V9851 TO V9853)
- IN: 1 - CNN BAR INS LT DUTY #8-350 1P 6-WAY



MATCH LINE STA. 508+00
SEE SHEET 3

MATCH LINE STA. 514+00
SEE SHEET 5

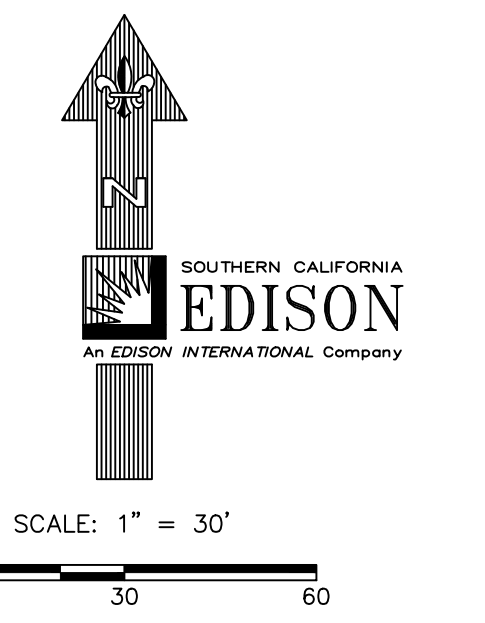
SURVEYED
DATE: 02-12-21

UNDERGROUND SERVICE ALERT
Contact USA
Dial 811 or 800-422-4133
www.digalert.org/contact
For Underground Locating
Two Working Days Before You Dig
016: Rev: 05/28/20

WARNING:
- UNDERGROUND LOCATIONS FOR ELECTRIC, WATER, STORM DRAIN, TELEPHONE & CATV SHOWN ARE APPROXIMATE. POTHOLE FOR EXACT LOCATIONS.

DATE	REVISION DESCRIPTION	APPROVED	DRAWN	CHECKED
03/21/23	ADDED DUCTS & CAPS FOR FUTURE STREET LIGHT WORK ORDERS	SLS	JLOW	JFS
08/30/22	UPDATE LBCWD TRENCH LOCATION	SS	CV	JS
07/25/22	EASEMENT CHANGES - LBCWD		CV	JS
04/26/22	CHANGE ORDER - MOVED LBCWD TRENCH LOCATION		CV	JS
04/01/22	LBCWD TRENCH RELOCATION		CV	JS
01/31/22	REVISED MANHOLE LOCATION		CV	JS
01/27/22	ADDED LBCWD DRAIN LINES TO DWG		CV	JS
04/30/21	CONVERSION TO AFD 2020		RW	TT

DISTRICT 4.5 - SADDLEBACK	PROJ. MGR PEARCE, TODD B. PHONE: 714-973-5637	PLANNER SPENCER, JAMES PHONE: 714-796-9910	DESIGNER VIGBERT, CORY HAYES
PROJECT NO. 2096779	SERVICE REQUEST 2993069	MSR NO. 1782378-RULE 20A-UG INSTALL	ASSOC DESIGN 1342765
CIRCUIT / VOLTAGE AGATE 12KV	GPS	PROJECT-1 1782375-RULE 20A-OR REMOVAL	ASSOC DESIGN 1342763
SUB / PG NO. MORRO SUB	CIRCUIT CODE 00115	PROJECT-3	ASSOC DESIGN
GRID MAP SEE ABOVE	J.P.A. NO.	PROPOSED CONSTRUCTION (LOCATION) RULE 20A - AGATE 12KV % MORRO BLUEBIRD CANYON LAGUNA BEACH CA 92651	
F 08/30/22	SEE/SS	SEE/SS	SEE/SS
F 12/23/21	SEE/SS	SEE/EZ	SEE/SS/SS/SS/SS/SS
P 08/04/21	EZ	IS	
B 04/29/21	RW/QUES/IT	QUES/EX	
TYPE	DATE	APPROVED BY	CHECKED BY
Southern California Edison Company			SHEET 4 of 7
			DESIGN/DWG NO. 1342765_2.01

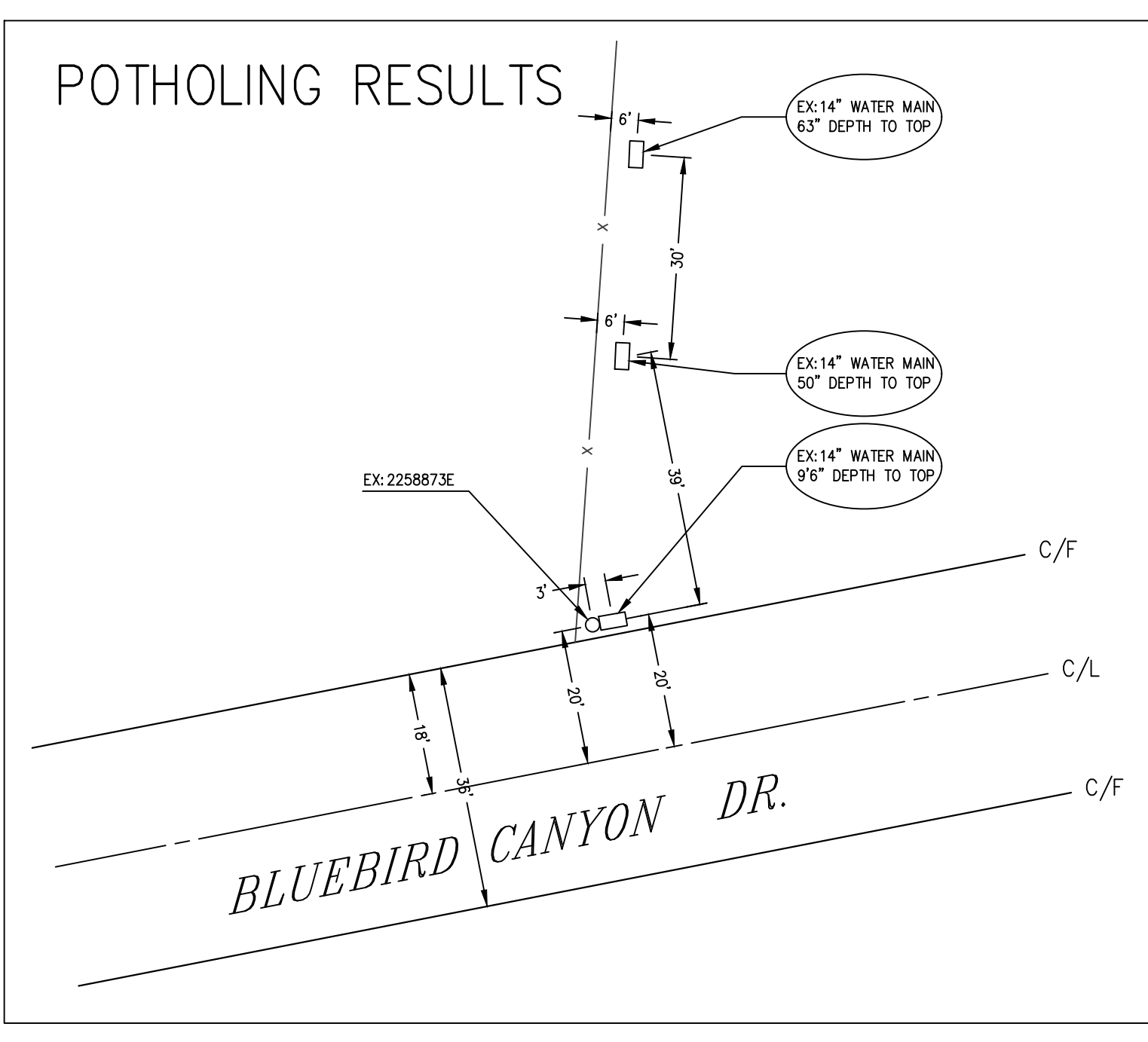


FINAL DESIGN
APPROVED FOR CONSTRUCTION

TD1782378
 SAME HOLE EXTREME POLE
 IN: 4738811E
 CLASS 2
 45' - POLE 45' CL 2 WD FT /W PROT BARR WF
 IN: 1 - XA DBL HD DE COMP 10" (ATTCH @ 37'6")
 IN: 1 - SW OMNI HZ-SIDE DE 600A 12KV 3W (PS1651 ATTCH @ 33'6")
 LINE DEVICE ID: _____
 IN: 6 - INS POLY DE 12KV CNTM RIG 2/0 STR
 IN: 3 - INS POLY 12(15)KV STDOFF/DE ARM 4/0-336
 IN: 3 - KADDAS WLDLIFE CVD CND DEAD END COVER

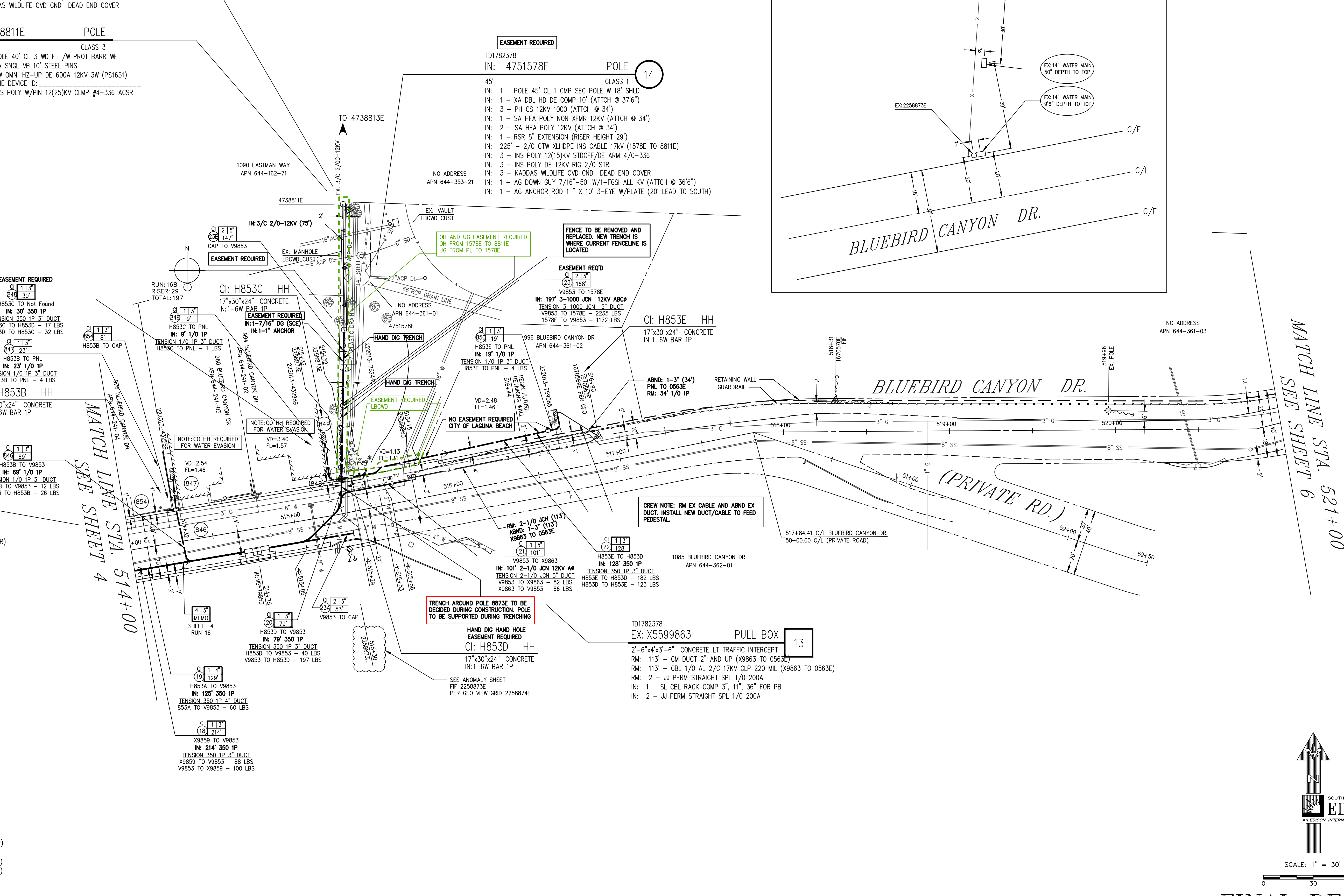
TD1782378
 RM: 4738811E POLE
 CLASS 3
 40' - POLE 40' CL 3 WD FT /W PROT BARR WF
 RM: 1 - XA SNGL VB 10" STEEL PINS
 RM: 1 - SW OMNI HZ-UP DE 600A 12KV 3W (PS1651)
 LINE DEVICE ID: _____
 RM: 3 - INS POLY W/PIN 12(25)KV CLMP #4-336 ACSR

EASEMENT REQUIRED
 TD1782378
 IN: 4751578E POLE
 CLASS 1
 45' - POLE 45' CL 1 CMP SEC POLE W 18" SHLD
 IN: 1 - XA DBL HD DE COMP 10" (ATTCH @ 37'6")
 IN: 3 - PH CS 12KV 1000 (ATTCH @ 34')
 IN: 1 - SA HFA POLY NON XFMR 12KV (ATTCH @ 34')
 IN: 2 - SA HFA POLY 12KV (ATTCH @ 34')
 IN: 1 - RSR 5" EXTENSION (RISER HEIGHT 29")
 IN: 225' - 2/0 CTW XLHDPE INS CABLE 17KV (1578E TO 8811E)
 IN: 3 - INS POLY 12(15)KV STDOFF/DE ARM 4/0-336
 IN: 3 - INS POLY DE 12KV RIG 2/0 STR
 IN: 3 - KADDAS WLDLIFE CVD CND DEAD END COVER
 IN: 1 - AG DOWN GUY 7/16"-50" W/1-FGS ALL KV (ATTCH @ 36'6")
 IN: 1 - AG ANCHOR ROD 1" X 10' 3-EYE W/PLATE (20' LEAD TO SOUTH)



TD1782378
 Cl: V5579853 VAULT
 7'x14'x8'
 TUB STYLE

- CI: 2 - 6" GRADE RINGS
- CI: 2 - 10" POLYETHYLENE STANDPIPES
- RM: 34' - CM DUCT 2" AND UP (0563E TO PANEL)
- RM: 34' - CBL 2-1/0 1-2 AL 3-1/C 600V CLP PLEX (996 BLUEBIRD CANYON DR)
- CI: 1 - S V 7'x14'x8" TUB 2 PIECE
- CI: 1 - SS TAX EXCV CST FOR VLT
- IN: 1 - SL CBL RACK COMP 3", 11", 36" FOR VLT/MH
- IN: 1 - TR UG BT MC F DE 50KVA 12KV 120/240 1P SN:
- IN: 1 - JJ LB JUNC BAR 4WY 200A 15KV
- CI: 101' - CM DUCT 5" (V9853 TO X9863)
- CI: 336' - CM DUCT 5" (V9853 TO 1578E)
- CI: 401' - CM DUCT 5" (V9853 TO CAP)
- CI: 532' - CM DUCT FOR EXCAVATION
- IN: 591' - CBL 1000 AL 1-1/C 17KV CLP PJ (V9853 TO 1578E)
- IN: 101' - CBL 1/0 AL 2/C 17KV CLP 220 MIL (V9853 TO X9863)
- CI: 4 - S HH CONC 17"x30"x24"
- CI: 4 - SS TAX EXCV CST FOR BD/PAD/PB/PME/SB/SOE
- IN: 6 - CNN BAR INS LT DUTY #8-350 1P 6-WAY
- CI: 129' - CM DUCT 2 1/2" TO 4" (V9853 TO H853A)
- CI: 69' - CM DUCT 2 1/2" TO 4" (V9853 TO H853B)
- CI: 30' - CM DUCT 2 1/2" TO 4" (V9853 TO H853C)
- CI: 79' - CM DUCT 2 1/2" TO 4" (V9853 TO H9830)
- CI: 128' - CM DUCT 2 1/2" TO 4" (H853D TO H853E)
- CI: 214' - CM DUCT 2 1/2" TO 4" (V9853 TO X9859)
- IN: 69' - CBL 2-1/0 1-2 AL 3-1/C 600V CLP PLEX (V9853 TO H853B)
- IN: 214' - CBL (2) 350 MCM, (1) 4/0 600V CLP PLEX (V9853 TO X9859)
- IN: 79' - CBL (2) 350 MCM, (1) 4/0 600V CLP PLEX (V9853 TO H9830)
- IN: 128' - CBL (2) 350 MCM, (1) 4/0 600V CLP PLEX (H853D TO H853E)
- IN: 129' - CBL (2) 350 MCM, (1) 4/0 600V CLP PLEX (V9853 TO H853A)
- IN: 30' - CBL (2) 350 MCM, (1) 4/0 600V CLP PLEX (V9853 TO H853C)
- CI: 23' - CM DUCT 2 1/2" TO 4" (H853B TO PANEL)
- CI: 9' - CM DUCT 2 1/2" TO 4" (H853C TO PANEL)
- CI: 19' - CM DUCT 2 1/2" TO 4" (H853E TO PANEL)
- CI: 12' - CM DUCT 2 1/2" TO 4" (H853A TO PANEL)
- CI: 8' - CM DUCT 2 1/2" TO 4" (H853B TO CAP)
- IN: 23' - CBL 2-1/0 1-2 AL 3-1/C 600V CLP PLEX (980 BLUEBIRD CANYON DR)
- IN: 9' - CBL 2-1/0 1-2 AL 3-1/C 600V CLP PLEX (994 BLUEBIRD CANYON DR)
- IN: 19' - CBL 2-1/0 1-2 AL 3-1/C 600V CLP PLEX (996 BLUEBIRD CANYON DR)
- IN: 12' - CBL 2-1/0 1-2 AL 3-1/C 600V CLP PLEX (968 BLUEBIRD CANYON DR)
- IN: 3 - JJ LBE 1/0 200A 12KV (J852A POS. 1)
- IN: 2 - JJ LBE 1/0 200A 12KV (J852A POS. 2)
- IN: 2 - JJ LBE 1/0 200A 12KV (J852A POS. 3)
- IN: 3 - JJ DE DB RCPT INS W/BAIL #2 OR 1/0 200A (J852A POS. 4)
- IN: 1 - JJ DE DB RCPT INS W/BAIL #2 OR 1/0 200A (J852A POS. 2)
- IN: 1 - JJ DE DB RCPT INS W/BAIL #2 OR 1/0 200A (J852A POS. 3)



MATCH LINE STA. 521+00
 SEE SHEET 6



WARNING:
 -UNDERGROUND LOCATIONS FOR ELECTRIC, WATER, STORM DRAIN, TELEPHONE & CATV SHOWN ARE APPROXIMATE. POTHOLE FOR EXACT LOCATIONS.

GRID MAP NO.
 MT-2810-A
 MT-2810-B
 MT-2811-H
 MT-2910-A
 MT-2911-G

FINAL DESIGN
 APPROVED FOR CONSTRUCTION

DATE	REVISION DESCRIPTION	APPROVED	DRAWN	CHECKED
03/21/23	ADDED DUCTS & CAPS FOR FUTURE STREET LIGHT WORK ORDERS	SLS	JLOW	JFS
08/30/22	UPDATE LBCWD TRENCH LOCATION	SS	CV	JS
07/25/22	EASEMENT CHANGES - LBCWD	CV	JS	
04/26/22	CHANGE ORDER - MOVED LBCWD TRENCH LOCATION	CV	JS	
04/01/22	LBCWD TRENCH RELOCATION	CV	JS	
01/31/22	REVISED MANHOLE LOCATION	CV	JS	
01/27/22	ADDED LBCWD DRAIN LINES TO DWG	CV	JS	
04/30/21	CONVERSION TO AFD 2020	RW	TT	

DISTRICT	A3 - SADDLEBACK	PROJ. MGR	PEARCE, TODD B.	PLANNER	SPENCER, JAMES	DESIGNER	VIBBERT, CORY HAYES
PROJECT NO.	2096779	SERVICE REQUEST	2993069	MSR NO.	1782378-RULE 20A-UH INSTALL	ASSOC DESIGN	1342765
CIRCUIT / VOLTAGE	AGATE 12KV	GPS		PRODUCT-1	1782375-RULE 20A-OG REMOVAL	ASSOC DESIGN	1342763
SUB / PG NO.	MORRO SUB	CIRCUIT CODE	00115	PRODUCT-3			
GRID MAP	SEE ABOVE	J.P.A. NO.		PROPOSED CONSTRUCTION (LOCATION)	RULE 20A - AGATE 12KV % MORRO BLUEBIRD CANYON LAGUNA BEACH CA 92651		
TYPE	DATE	APPROVED BY	CHECKED BY	DRAWN BY	PAX #	SHEET	DESIGN/DRWG NO.
						5 of 7	1342765_2.01

UNDERGROUND SERVICE ALERT
 Contact USA
 Dial 811 or 800-422-4133
 www.digalert.org/contact

SURVEYED
 DATE: 02-12-21

016: Rev: 05/28/20

EX: 2257799E POLE
 45' CLASS 2
 EX: 1 - TR OH 15KVA 12KV 120/240 1P

TD1782378
 IN: 493060E POLE
 45' CLASS 4
 IN: 1 - POLE 45' CL 4 WD FT /W PROT BARR WF
 IN: 1 - XA DBL HD DE COMP 10' (ATTCH @ 37'6")
 IN: 1 - TR OH 50KVA 12KV 120/240 1P (ATTCH @ 31'6")
 SN:
 IN: 1 - MISC AVIAN TRANS BUSHING COVER 3.25-4.25
 IN: 1 - FE CO ELF W/8" HD TN CMP XA 100A 12KV 1P (ATTCH @ 34'6")
 IN: 2 - FE FUSE ELF 15KV 12A
 IN: 1 - SA HFA POLY W/GND & T-GAP NO PRI-N 12KV
 IN: 1 - RSR 4" EXTENSION
 IN: 4 - MISC VBR DMP CVR COND 17KV 1/0, #2 & 2/0
 IN: 142' - #2 CTW XLHDPPE INS CABLE 17KV (3060E TO 7799E)
 IN: 6 - INS POLY PIN 12KV VRT VICE NYLON
 IN: 3 - INS POLY DE 12KV HVY LOAD #4 & 1/0
 IN: 3 - KADDAS WLDLIFE CVD COND DEAD END COVER
 IN: 1 - AG DOWN GUY 9/32" - 50' LESS THAN 22.5KV (ATTCH @ 37' GOING TO SOUTH ANCH)
 IN: 1 - AG ANCHOR ROD 1" x 10' 3-EYE W/PLATE (25' LEAD TO SOUTH)

TD1782378
 RM: 493060E POLE
 40' CLASS 5
 RM: 1 - POLE 40' CL 5 WD FT /W PROT BARR WF
 RM: 1 - SEC ROLLER (166-CLEVIS & SPOOL)
 RM: 133' - CD #2 STR CU TRIPLEX W/NEUTRAL (3060E TO 7799E)
 RM: 1 - AG DOWN GUY 9/32" - 50' LESS THAN 22.5KV
 RM: 1 - AG ANCHOR ROD 3/4" x 8' 2-EYE W/PLATE

TD1782378
 CI: X5579862 PULL BOX
 2'-6"x4"x3'-6" CONCRETE FULL TRAFFIC
 CI: 1 - S SPL BOX PB 2'6"x4"x3'6" CONC FT
 IN: 1 - CNN BAR INS HVY DUTY 4/0-700 1P 6-WAY
 CI: 53' - CM DUCT 5" (X9862 TO 3060E) (RUN 27)
 CI: 53' - CM DUCT FOR EXCAVATION (X9862 TO 3060E) (RUN 27)
 IN: 83' - CBL (2) 700, (1) 350 600V CLP PLEX (X9862 TO 3060E) (RUN 27)
 CI: 1 - SS TAX EXCV CST FOR BD/PAD/PB/PME/SB/SOE

TD1782378
 CI: X5579861 PULL BOX
 3'x5'x4' CONCRETE LT TRAFFIC INTERCEPT
 RM: 1 - S HH CONC 17"x30"x24" (H861A)
 CI: 1 - S SPL BOX PB 3'x5'x4' CON LT TRAF INTER
 CI: 1 - SS TAX EXCV CST FOR BD/PAD/PB/PME/SB/SOE
 IN: 1 - CNN BAR INS HVY DUTY 4/0-700 1P 6-WAY
 CI: 38' - CM DUCT 5" (X9861 TO X9860) (RUN 24)
 IN: 38' - CM DUCT FOR EXCAVATION (X9861 TO X9860) (RUN 24)
 IN: 38' - CBL (2) 350 MCM, (1) 4/0 600V CLP PLEX (X9861 TO X9860) (RUN 24)
 CI: 148' - CM DUCT 5" (X9861 TO X9862) (RUN 26)
 CI: 91' - CM DUCT 5" (X9861 TO H861B) (RUN 25)
 CI: 148' - CM DUCT FOR EXCAVATION (X9861 TO X9862) (RUN 26)
 CI: 91' - CM DUCT FOR EXCAVATION (X9861 TO H861B) (RUN 25)
 IN: 148' - CBL (2) 700, (1) 350 600V CLP PLEX (X9861 TO X9862) (RUN 26)
 IN: 91' - CBL (2) 350 MCM, (1) 4/0 600V CLP PLEX ((X9861 TO H861B) (RUN 25)

CREW NOTE: RM EXISTING H861A AND PLACE NEW PB IN THE SAME LOCATION TO TIE IN EX DUCT/CABL AND NEW DUCT/CBL

TD1782378
 CI: X5579863 PULL BOX
 2'-6"x4"x3'-6" CONCRETE FULL TRAFFIC
 CI: 1 - S SPL BOX PB 2'6"x4"x3'6" CONC FT
 CI: 1 - SS TAX EXCV CST FOR BD/PAD/PB/PME/SB/SOE
 IN: 1 - CNN BAR INS LT DUTY #8-350 1P 4-WAY
 CI: 5' - CM DUCT 2 1/2" TO 4" (X9863 TO 2593E) (RUN 852)
 CI: 5' - CM DUCT FOR EXCAVATION (X9863 TO 2593E) (RUN 852)
 IN: 35' - CBL 2-1/0 1-2 AL 3-1/2 600V CLP PLEX (X9863 TO 2593E) (RUN 852)

TD1782378
 IN: 4812593E EXTREME POLE
 35' CLASS 2
 IN: 1 - POLE 35' CL 2 WD FT /W PROT BARR WF
 IN: 1 - SEC ROLLER (166-CLEVIS & SPOOL)
 IN: 1 - RSR 3" ON KICK BLOCK EXTENSION
 IN: 33' - CD #4 STR AL TRIPLEX W/ACSR NEUTRAL (1120 SAILING WAY)

TD1782378
 CI: X5579860 PULL BOX
 2'-6"x4"x3'-6" CONCRETE FULL TRAFFIC
 CI: 1 - S SPL BOX PB 2'6"x4"x3'6" CONC FT
 CI: 1 - SS TAX EXCV CST FOR BD/PAD/PB/PME/SB/SOE
 IN: 1 - CNN BAR INS LT DUTY #8-350 1P 4-WAY
 CI: 36' - CM DUCT 2 1/2" TO 4" (X9860 TO PANEL) (RUN 851)
 CI: 36' - CM DUCT FOR EXCAVATION (X9860 TO PANEL) (RUN 851)
 IN: 36' - CBL 2-1/0 1-2 AL 3-1/2 600V CLP PLEX (1110 SAILING WAY) (RUN 851)

MATCH LINE STA. 521+00
 SEE SHEET 5

SURVEYED
 DATE: 02-12-21

UNDERGROUND SERVICE ALERT
 Contact USA
 Dial 811 or 800-422-4133
 www.digalert.org/contact
 For Underground Locating
 Two Working Days Before You Dig

WARNING:
 -UNDERGROUND LOCATIONS FOR ELECTRIC, WATER, STORM DRAIN, TELEPHONE & CATV SHOWN ARE APPROXIMATE. POTHOLE FOR EXACT LOCATIONS.

FINAL DESIGN
 APPROVED FOR CONSTRUCTION



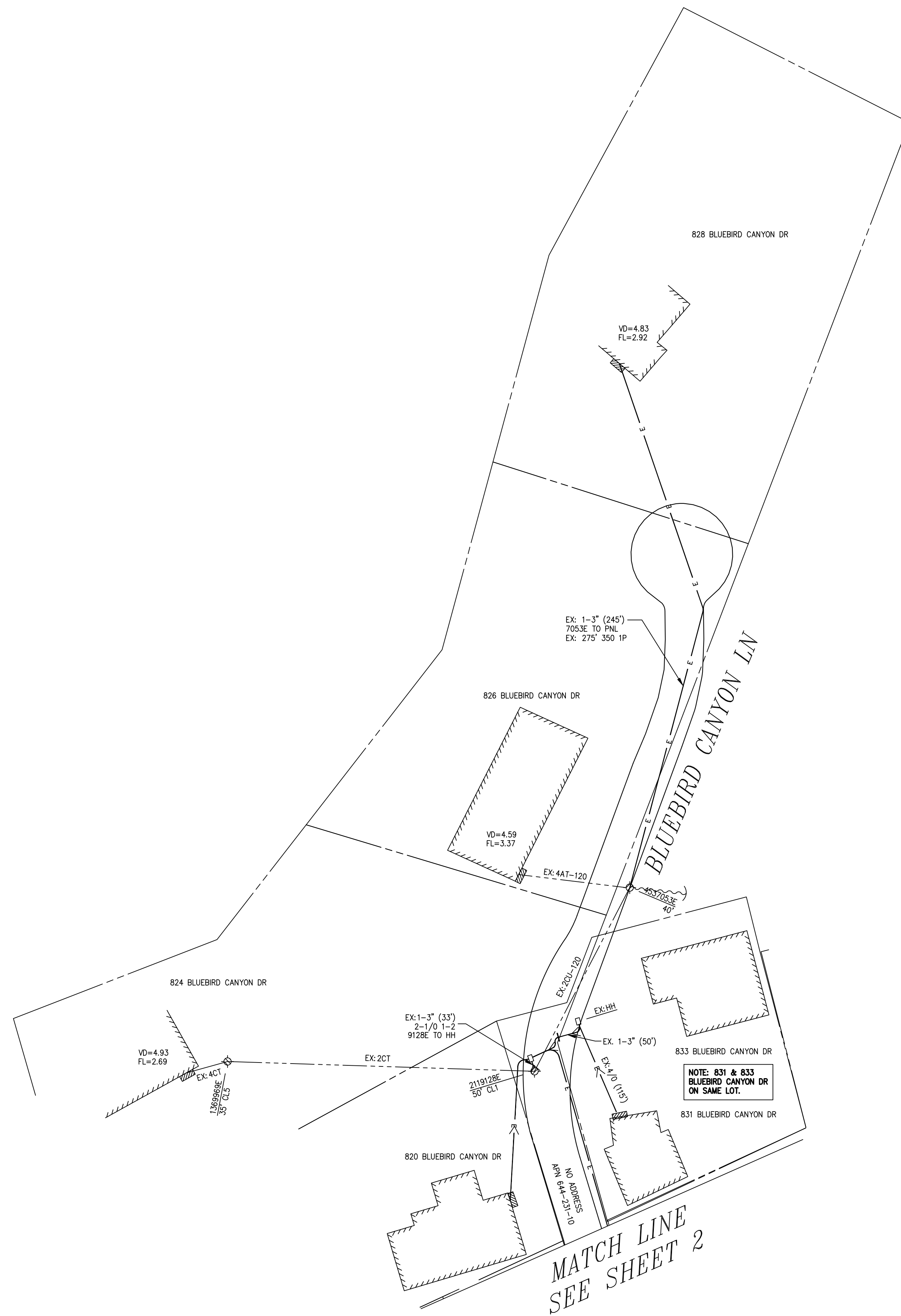
SCALE: 1" = 30'

DATE	REVISION DESCRIPTION	APPROVED	DRAWN	CHECKED
03/21/23	ADDED DUCTS & CAPS FOR FUTURE STREET LIGHT WORK ORDERS	SLS	JLOW	JFS
08/30/22	UPDATE LBCWD TRENCH LOCATION	SS	CV	JS
07/25/22	EASEMENT CHANGES - LBCWD		CV	JS
04/26/22	CHANGE ORDER - MOVED LBCWD TRENCH LOCATION		CV	JS
04/01/22	LBCWD TRENCH RELOCATION		CV	JS
01/31/22	REVISED MANHOLE LOCATION		CV	JS
01/27/22	ADDED LBCWD DRAIN LINES TO DWG		CV	JS
04/30/21	CONVERSION TO AFD 2020		RW	TT

DISTRICT	SADDLEBACK	PROJ. MGR.	PEARCE, TODD B.	PLANNER	SPENCER, JAMES	DESIGNER	VIBBERT, CORY HAYES
PROJECT NO.	2096779	SERVICE REQUEST	2993069	MSR NO.	1782378-RULE 20A-UG INSTALL	ASSOC. DESIGN	1342765
CIRCUIT / VOLTAGE	AGATE 12KV	GPS		PROJECT-2	1782375-RULE 20A-OH REMOVAL	ASSOC. DESIGN	1342763
SUB / PG NO.	MORRO SUB	CIRCUIT CODE	00115	PROJECT-3			
GRID MAP	SEE ABOVE	I.P.A. NO.					
F	08/30/22	S/E/SS	S/E/SS	S/E/CV			
F	12/23/21	S/E/SS	S/E/EZ	S/E/SS/CV			
P	08/04/21		EZ	IS			
B	04/29/21	RW/QUES/IT	QUES/EK				
TYPE	DATE	APPROVED BY	CHECKED BY	DRAWN BY	PAX #	SHEET	DESIGN/DRWG NO.
						6 of 7	1342765_2.01

FILE NAME: I:\PROJECTS\2019\2023\12-21 PM SAVED BY: JMW

FOR REFERENCE ONLY



MATCH LINE
SEE SHEET 2

NOTE: 831 & 833
BLUEBIRD CANYON DR
ON SAME LOT.

WARNING:
- UNDERGROUND LOCATIONS FOR ELECTRIC, WATER,
STORM DRAIN, TELEPHONE & CATV SHOWN ARE
APPROXIMATE. POT HOLE FOR EXACT LOCATIONS.

FINAL DESIGN
APPROVED FOR CONSTRUCTION



UNDERGROUND SERVICE ALERT
Contact USA
Dial 811 or 800-422-4133
www.digalert.org/contact

SURVEYED
DATE: 02-12-21

For Underground Locating
Two Working Days Before You Dig
016: Rev. 05/28/20

DATE	REVISION DESCRIPTION	APPROVED	DRAWN	CHECKED
03/21/23	ADDED DUCTS & CAPS FOR FUTURE STREET LIGHT WORK ORDERS	SLS	JLOW	JFS
08/30/22	UPDATE LBCWD TRENCH LOCATION	SS	CV	JS
07/25/22	EASEMENT CHANGES - LBCWD		CV	JS
04/26/22	CHANGE ORDER - MOVED LBCWD TRENCH LOCATION		CV	JS
04/01/22	LBCWD TRENCH RELOCATION		CV	JS
01/31/22	REVISED MANHOLE LOCATION		CV	JS
01/27/22	ADDED LBCWD DRAIN LINES TO DWG		CV	JS
04/30/21	CONVERSION TO AUD 2020		RW	TT

DISTRICT 4.3 - SADDLEBACK	PROJ. MGR. PEARCE, TODD B. PHONE: 714-973-5637	PLANNER SPENCER, JAMES PHONE: 714-796-9910	DESIGNER VIBBERT, CORY HAYES
PROJECT NO. 2096779	SERVICE REQUEST 12993069	MSR NO. GPS	PRODUCT-1 1782378-RULE 20A-UG INSTALL
CIRCUIT / VOLTAGE AGATE 12KV			PRODUCT-2 1782375-RULE 20A-OH REMOVAL
SUB / PG NO. MORRO SUB		CIRCUIT CODE 00115	PRODUCT-3
GRID MAP SEE ABOVE	J.P.A. NO.	PROPOSED CONSTRUCTION (LOCATION) RULE 20A - AGATE 12KV % MORRO BLUEBIRD CANYON LAGUNA BEACH CA 92651	
F 08/30/22	SCE/SS	SCE/SS	SCE/CV
F 12/23/21	SCE/SS	SCE/EZ	SCE/SS/CV
P 08/04/21	EZ	IS	
B 04/29/21	RW/QUES/JT	QUES/EX	
TYPE	DATE	APPROVED BY	CHECKED BY
Southern California Edison Company			PAX #
SHEET 7 of 7			DESIGN/DRWG NO. 1342765_2.01

FILE NAME: I:\MORRO_2.01.DWG, SAVE DATE: 07/20/23, 12:31 PM, SAVER: BFL/DWG