

STRUCTURE	QTY
14X32 PEDESTAL	2
3'X5' TRAFFIC RATED VAULT	1
24X36 TRAFFIC RATED VAULT	6
24X36 VAULT	7
17X30 VAULT	3

SPH1432



24X36X24, DEEP, TRV(H2O), CONCRETE, STEEL LID

CHANNELL BULK GRADE LEVEL VAULT
 BULK4/3/2/1/0320
 HOPE MOLDED BOX/DUCTILE IRONCOVERS

FEATURES:

- BULK vault body - HDPE structural foam (plastic) body w/ embedded, factory installed metal wiring
- 2 HDPE Body - HDPE 24" x 36" x 24" (Open floor)
- 2 Covers: Ductile iron split lid with galvanized steel support frame and center support beam
- 2 SHC lock down locations
- Load Rating: ASD/FTD H-20
- Galvanized steel step racks - 4 places
- Meets or exceeds the ADA requirements for slip resistance

WEIGHT & SHIPPING:

- Cover Weight: 220 lbs.
- Assembly Weight: 375 lbs.
- Loaded Pallet Weight: 760 lbs.
- Pallet Size: 48" x 48"
- Pallet Dimensions: 34" L x 44" W x 30" H

LOAD RATING:

- ASD/FTD H-20
- See attached Color Coded Placement Guide
- EN 124 Class C225
- Must be installed per manufacturers instructions

Inside Dimensions		
Length	Width	Depth
34.375"	22.75"	24"

CHANNELL

BULK 4



An upgradable, re-enterable cable management vault system series, BULK redefines the standard with one universal body that can easily meet the standards of light, medium, and heavy duty applications simply by changing its cover or ring design.

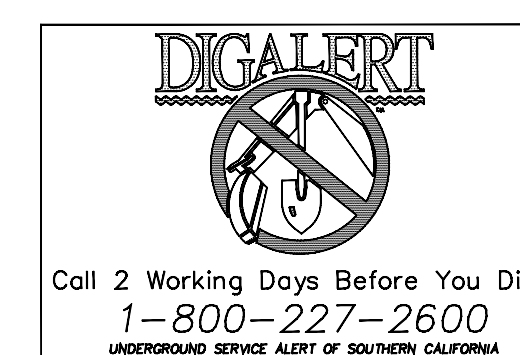
Dimensions: 24"W x 36"L
 Available Depths: 12"/18"/24"/30"/36"

BULK 3



An upgradable, re-enterable cable management vault system series, BULK redefines the standard with one universal body that can easily meet the standards of light, medium, and heavy duty applications simply by changing its cover or ring design.

Dimensions: 17"W x 30"L
 Available Depths: 12"/18"/24"/30"/36"



LEGEND

RE

- LOCK BOX
- PULL BOX
- PEDESTAL/VAULT/TRL
- POLE W/ XFMR
- JOINT POLE
- ANCHOR
- OVERHEAD GUY
- STUB AND PLUG
- RISER
- SPLIT Y

FIBER

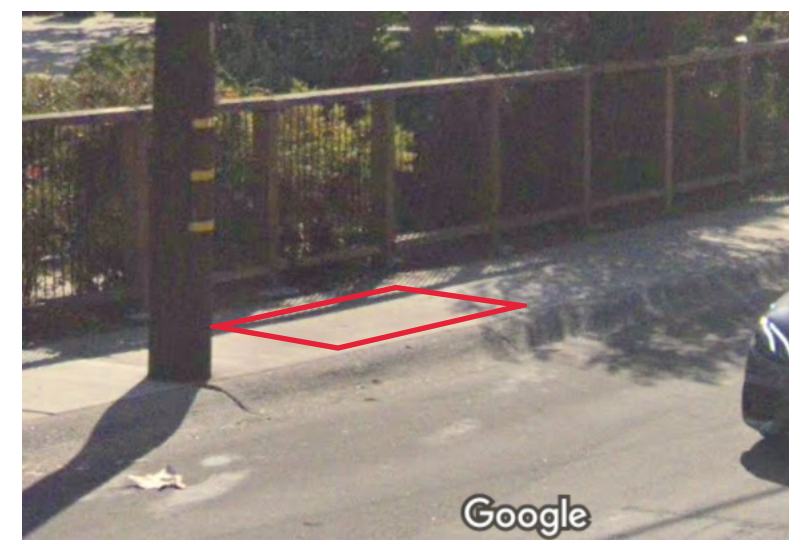
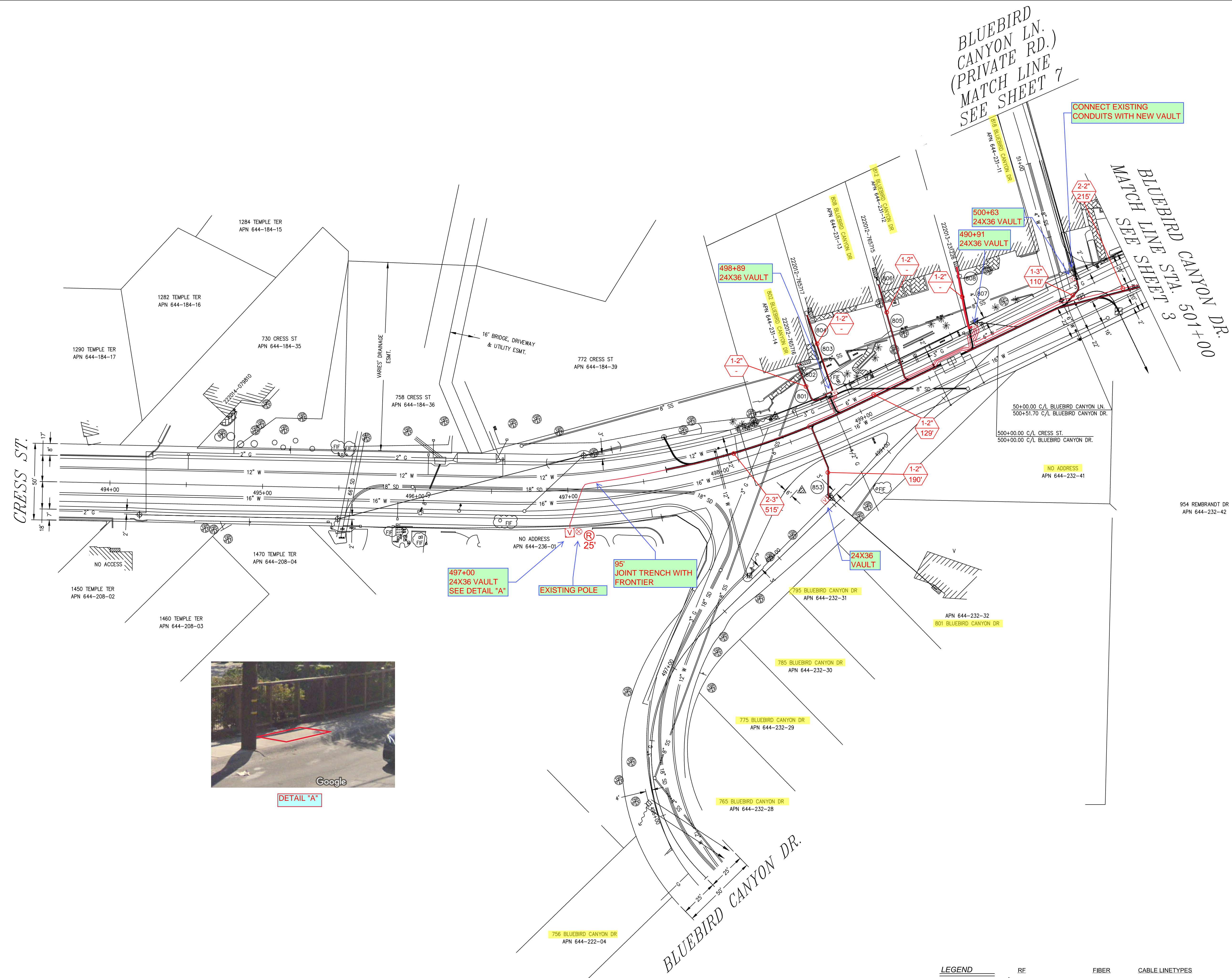
- FIBER OPTIC
- SLACK LOOP
- SPLICE CASE
- TERMINATOR
- OPTICAL SPLITTER
- OPTICAL CONNECTOR
- OPTICAL RECEIVER NODE

CABLE LINETYPES

- REEL #
- FIBER COUNT
- COAX 1239 - F16 OR 12CT
- FIBER OPTIC CABLE
- 540QR - COAX 540QR CABLE
- 715QR - COAX 715QR CABLE
- OH POLES & CABLE
- 1" CONDUIT ROUTE
- 2" CONDUIT ROUTE
- SIZE OF CONDUITS

NUMBER OF CONDUITS: 2-22
 FOOTAGE: 182'

NODE NUMBER	POWER SUPPLY	TB GRID	CA GRID
BLUEBIRD CYN RD CONVERSION		PROJECT NUMBER:	
LAGUNA BEACH, CA 92651		UNIT COUNT:	
SCALE: 1"= 30'	DATE: 9/28/2022	SHEET: 1 OF 6	
CONTRACTOR:		FILE NUMBER:	
COX CALIFORNIA		BRINGING US CLOSER	
PLANNER: FRANK AGUILAR	PLANNER CONTACT: (949) 279-5404		



DETAIL "A"

BLUEBIRD CANYON LN. (PRIVATE RD.) MATCH LINE SEE SHEET 7

BLUEBIRD CANYON DR. STA. 501+00 MATCH LINE SHEET 3

CRESS ST.

BLUEBIRD CANYON DR.

LEGEND

- LOCK BOX
- PULL BOX
- PEDESTAL/VAULT/H.
- POLE W/ XFMR
- JOINT POLE
- ANCHOR
- OVERHEAD GUY
- STUB AND PLUG
- RISER
- SPLIT Y
- AMPLIFIER
- IN-LINE SPLICE
- AC POWER BLOCK
- POWER INSERTER
- IN-LINE EQUALIZER
- TAPS
- SPLITTER
- DIRECTIONAL COUPLER
- FIBER OPTIC
- BLACK LOOP
- SPLICE CASE
- TERMINATOR
- OPTICAL SPLITTER
- OPTICAL CONNECTOR
- OPTICAL RECEIVER NODE
- CABLE LINETYPES
- REEL #
- FIBER COUNT
- COAX .5400R CABLE
- COAX .7150R CABLE
- OH POLES & CABLE
- 1" CONDUIT ROUTE
- 2" CONDUIT ROUTE
- SIZE OF CONDUITS
- FOOTAGE

DIG ALERT
Call 2 Working Days Before You Dig!
1-800-227-2600
UNDERGROUND SERVICE ALERT OF SOUTHERN CALIFORNIA

NODE NUMBER	POWER SUPPLY	TB GRID	CA GRID
BLUEBIRD CYN RD CONVERSION		PROJECT NUMBER:	
LAGUNA BEACH, CA 92651		DATE: 9/21/2022	
SCALE 1"=30'		UNIT COUNT: 2 OF 6	
CONTRACTOR		SHEET	
COX CALIFORNIA		BRINGING US CLOSER	
PLANNER FRANK AGUILAR	PLANNER CONTACT (949) 279-5404	FILE NUMBER	



FILE NAME: 142095.DWG - COPY 1 (DATE: 9/20/2022 1:07 PM) SALES BY: HBRECH



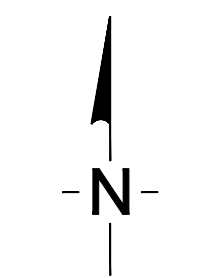
501+47
14X32 PEDESTAL
(to connect
vault with
pedestal)

502+50.5
17X30 VAULT

504+26
24X36 TRAFFIC
RATED VAULT

505+54
24X36 TRAFFIC
RATED VAULT

507+51
24X36 TRAFFIC
RATED VAULT



LEGEND

- | | | | | | | | | | | | | | | | |
|--|--|--|--|--------|-------------|----------|-------------|-------|------------------|-------|------------------|--------|--------------|----|----|
| <ul style="list-style-type: none"> LOCK BOX PULL BOX PEDESTAL/VAULT/H. POLE W/ XFMR JOINT POLE ANCHOR OVERHEAD GUY STUB AND PLUG RISER SPLIT "Y" | <ul style="list-style-type: none"> AMPLIFIER IN-LINE SPLICER AC POWER BLOCK POWER INSERTER IN-LINE EQUALIZER TAPS SPLITTER DIRECTIONAL COUPLER | <ul style="list-style-type: none"> FIBER OPTIC SLACK LOOP SPLICE CASE TERMINATOR OPTICAL SPLITTER OPTICAL CONNECTOR OPTICAL RECEIVER NODE | <p>CABLE LINETYPES</p> <table border="0"> <tr> <td>REEL #</td> <td>FIBER COUNT</td> </tr> <tr> <td>COX 1239</td> <td>F16 OR 12CT</td> </tr> <tr> <td>540QR</td> <td>COAX 540QR CABLE</td> </tr> <tr> <td>715QR</td> <td>COAX 715QR CABLE</td> </tr> <tr> <td>J-POLE</td> <td>POLE W/ XFMR</td> </tr> <tr> <td>NT</td> <td>NT</td> </tr> </table> <p>NUMBER OF CONDUITS: 2-2"
FOOTAGE: 1182'</p> | REEL # | FIBER COUNT | COX 1239 | F16 OR 12CT | 540QR | COAX 540QR CABLE | 715QR | COAX 715QR CABLE | J-POLE | POLE W/ XFMR | NT | NT |
| REEL # | FIBER COUNT | | | | | | | | | | | | | | |
| COX 1239 | F16 OR 12CT | | | | | | | | | | | | | | |
| 540QR | COAX 540QR CABLE | | | | | | | | | | | | | | |
| 715QR | COAX 715QR CABLE | | | | | | | | | | | | | | |
| J-POLE | POLE W/ XFMR | | | | | | | | | | | | | | |
| NT | NT | | | | | | | | | | | | | | |

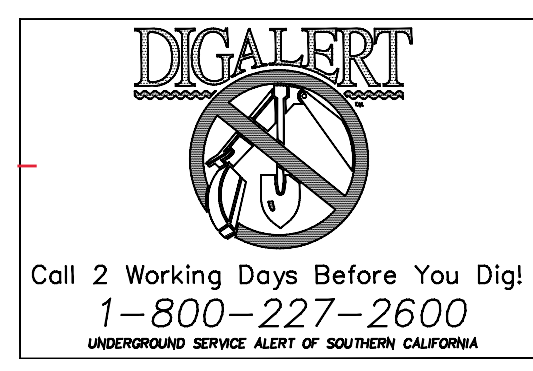
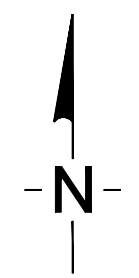
DIGALERT

Call 2 Working Days Before You Dig!
1-800-227-2600
UNDERGROUND SERVICE ALERT OF SOUTHERN CALIFORNIA

NODE NUMBER	POWER SUPPLY	TB GRID	CA GRID
BLUEBIRD CYN RD CONVERSION		PROJECT NUMBER:	
LAGUNA BEACH, CA 92651		UNIT COUNT:	
SCALE 1" = 30'	DATE: 9/21/2022	SHEET 3 OF 6	
COX CALIFORNIA		BRINGING US CLOSER	
PLANNER FRANK AGUILAR	PLANNER CONTACT (949) 279-5404	FILE NUMBER	

FILE NAME: 142026.DWG - COPY 1 | DWG SAVE DATE: 1/25/2022 1:07 PM | SALES BY: HBRECH

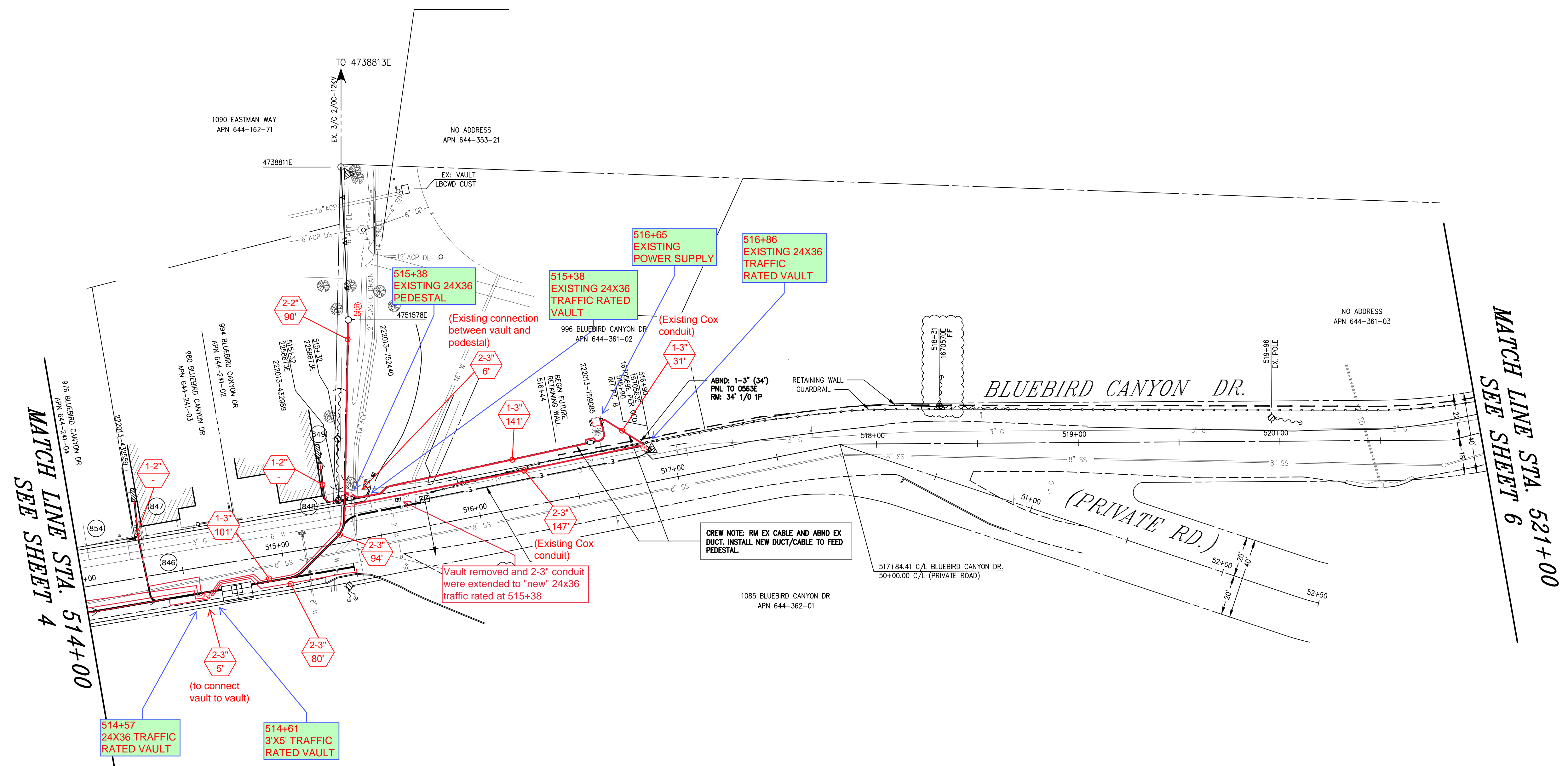
FILE NAME: S42760_001 - COPY (1) DATE: 04/17/2022 1:07 PM DRAWN BY: HSEBCH



LEGEND

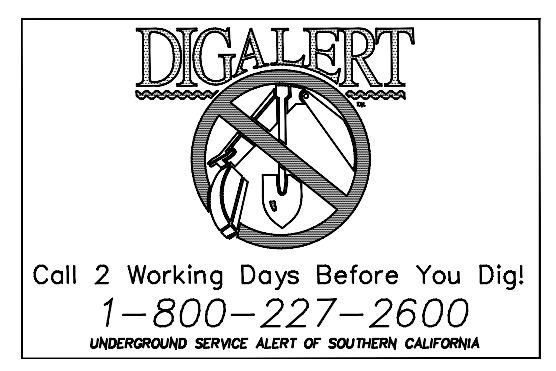
- | | | | | | | | | | | | | | | | |
|--|---|--|--|--------|-------------|----------|-------------|-------|------------------|-------|------------------|--------------|-------------------|----|----|
| <ul style="list-style-type: none"> LOCK BOX PULL BOX PEDESTAL/VAULT/H. POLE W/ XFMR JOINT POLE ANCHOR OVERHEAD GUY STUB AND PLUG RISER SPLIT "Y" | <ul style="list-style-type: none"> AMPLIFIER IN-LINE SPLICE AC POWER BLOCK POWER INSERTER IN-LINE EQUALIZER TAPS SPLITTER DIRECTIONAL COUPLER | <ul style="list-style-type: none"> FIBER OPTIC SLACK LOOP SPLICE CASE TERMINATOR OPTICAL SPLITTER OPTICAL CONNECTOR OPTICAL RECEIVER NODE | <p>CABLE LINETYPES</p> <table border="0"> <tr> <td>REEL #</td> <td>FIBER COUNT</td> </tr> <tr> <td>COX 1239</td> <td>F16 OR 12CT</td> </tr> <tr> <td>540QR</td> <td>COAX 540QR CABLE</td> </tr> <tr> <td>715QR</td> <td>COAX 715QR CABLE</td> </tr> <tr> <td>POLE W/ XFMR</td> <td>O/H POLES & CABLE</td> </tr> <tr> <td>NT</td> <td>NT</td> </tr> </table> <p>NUMBER OF CONDUITS SIZE OF CONDUITS
FOOTAGE 182'</p> | REEL # | FIBER COUNT | COX 1239 | F16 OR 12CT | 540QR | COAX 540QR CABLE | 715QR | COAX 715QR CABLE | POLE W/ XFMR | O/H POLES & CABLE | NT | NT |
| REEL # | FIBER COUNT | | | | | | | | | | | | | | |
| COX 1239 | F16 OR 12CT | | | | | | | | | | | | | | |
| 540QR | COAX 540QR CABLE | | | | | | | | | | | | | | |
| 715QR | COAX 715QR CABLE | | | | | | | | | | | | | | |
| POLE W/ XFMR | O/H POLES & CABLE | | | | | | | | | | | | | | |
| NT | NT | | | | | | | | | | | | | | |

NODE NUMBER	POWER SUPPLY	TB GRID	CA GRID
BLUEBIRD CYN RD CONVERSION		PROJECT NUMBER:	
LAGUNA BEACH, CA 92651		SCALE: 1"=30'	
CONTRACTOR	DATE: 9/21/2022	UNIT COUNT: 4 OF 6	
		SHEET 4 OF 6	
		PLANNER: FRANK AGUILAR	PLANNER CONTACT: (949) 279-5404



MATCH LINE STA. 514+00
 MATCH SEE SHEET 4

MATCH LINE STA. 521+00
 MATCH SEE SHEET 6



LEGEND

	LOCK BOX
	PULL BOX
	PEDESTAL/VAULT/H.
	POLE W/ XFMR
	JOINT POLE
	ANCHOR
	OVERHEAD GUY
	STUB AND PLUG
	RISER
	SPLIT Y

RF

	AMPLIFIER
	IN-LINE SPLICE
	AC POWER BLOCK
	POWER INSERTER
	IN-LINE EQUALIZER
	TERMINATOR
	OPTICAL SPLITTER
	OPTICAL CONNECTOR
	OPTICAL RECEIVER NODE
	DIRECTIONAL COUPLER

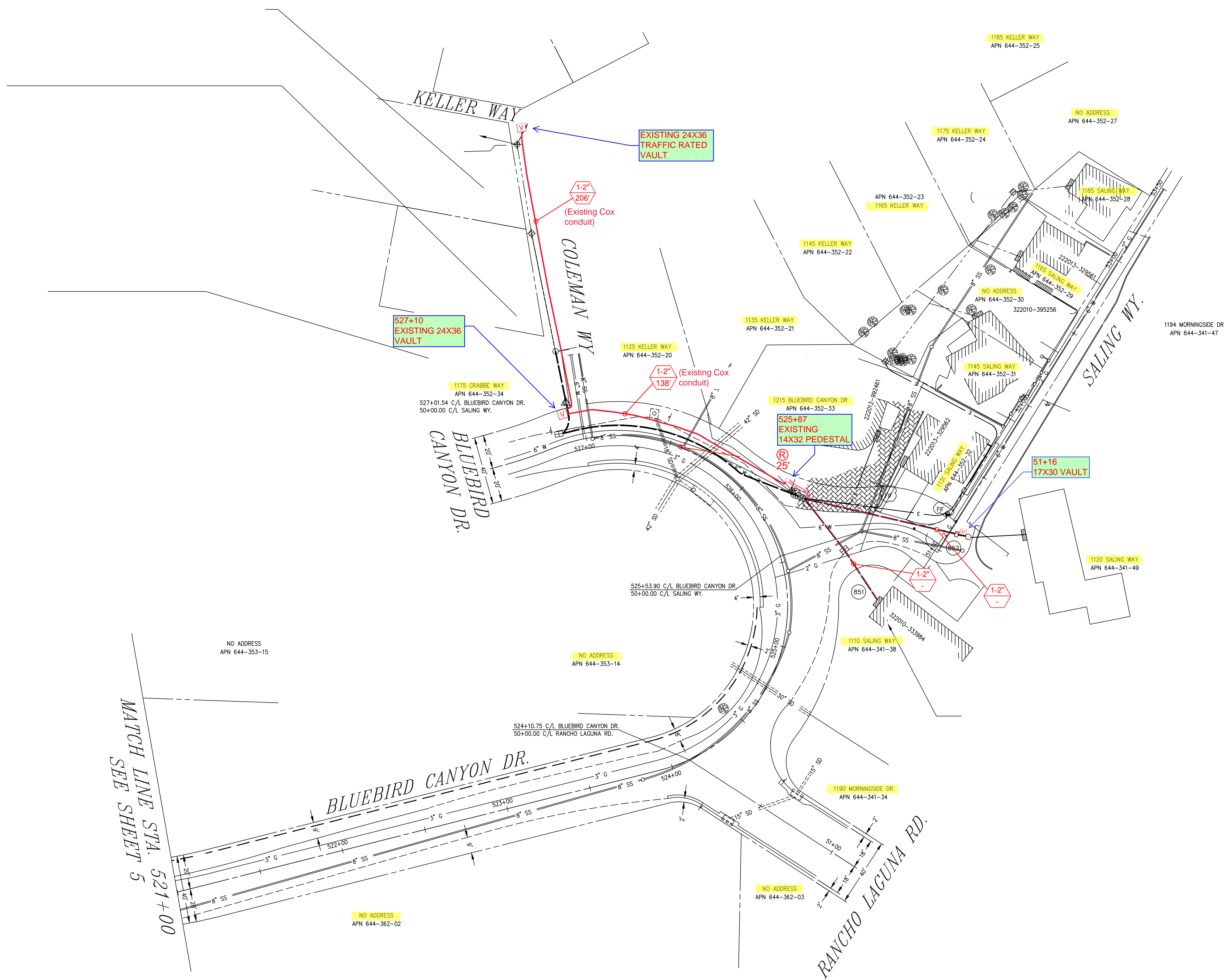
FIBER

	FIBER OPTIC
	SLACK LOOP
	SPLICE CASE
	TERMINATOR
	OPTICAL SPLITTER
	OPTICAL CONNECTOR
	OPTICAL RECEIVER NODE

CABLE LINETYPES

	COAX 1239 — F16 OR 12CT —	FIBER COUNT
	COAX .540QR	FIBER OPTIC CABLE
	COAX .715QR	COAX .540QR CABLE
	OH POLES & CABLE	

NODE NUMBER	POWER SUPPLY	TB GRID	CA GRID
BLUEBIRD CYN RD CONVERSION		PROJECT NUMBER:	
LAGUNA BEACH, CA 92651			
SCALE 1"=30'	DATE: 9/28/2022	UNIT COUNT: 5 OF 6	
CONTRACTOR		SHEET	
COX CALIFORNIA		BRINGING US CLOSER	
PLANNER FRANK AGUILAR	PLANNER CONTACT (949) 279-5404	FILE NUMBER	



MATCH LINE STA. 521+00
SEE SHEET 5



DIGALERT
Call 2 Working Days Before You Dig!
1-800-227-2600
UNDERGROUND SERVICE ALERT OF SOUTHERN CALIFORNIA

LEGEND

- LOCK BOX
- PULL BOX
- PEDESTAL/VAULT/H.
- POLE W/ XFMR
- JOINT POLE
- ANCHOR
- OVERHEAD GLY
- STUB AND PLUG
- RISER
- SPLIT "Y"

RE

- AMPLIFIER
- IN-LINE SPLICE
- AC POWER BLOCK
- POWER INSERTER
- IN-LINE EQUALIZER
- TAPS
- SPLITTER
- DIRECTIONAL COUPLER

FIBER

- FIBER OPTIC
- SLACK LOOP
- SPlice CASE
- TERMINATOR
- OPTICAL SPLITTER
- OPTICAL CONNECTOR
- OPTICAL RECEIVER NODE

CABLE LINETYPES

- REEL #
- CDX 1239 - F16 OR 12CT - FIBER OPTIC CABLE
- 540QR - COAX. 540QR CABLE
- 715QR - COAX. 715QR CABLE
- HOLE - POLE W/ XFMR
- NT - OH POLES & CABLE
- 1' CONDUIT ROUTE
- 2' CONDUIT ROUTE
- NUMBER OF CONDUITS
- FOOTAGE

NODE NUMBER	POWER SUPPLY	TB GRID	CA GRID
BLUEBIRD CYN RD CONVERSION		PROJECT NUMBER:	
LAGUNA BEACH, CA 92651		UNIT COUNT:	
SCALE 1"=30'	DATE: 9/28/2022	SHEET 6 OF 6	
COX CALIFORNIA BRINGING US CLOSER		PLANNER CONTACT FRANK AGUILAR (949) 279-5404	
PLANNER FRANK AGUILAR		FILE NUMBER	