



# Laguna Canyon Road: Protect & Connect

## COMMUNITY WORKSHOP

May 7<sup>th</sup>, 2024



# Welcome & Introductions





# Agenda

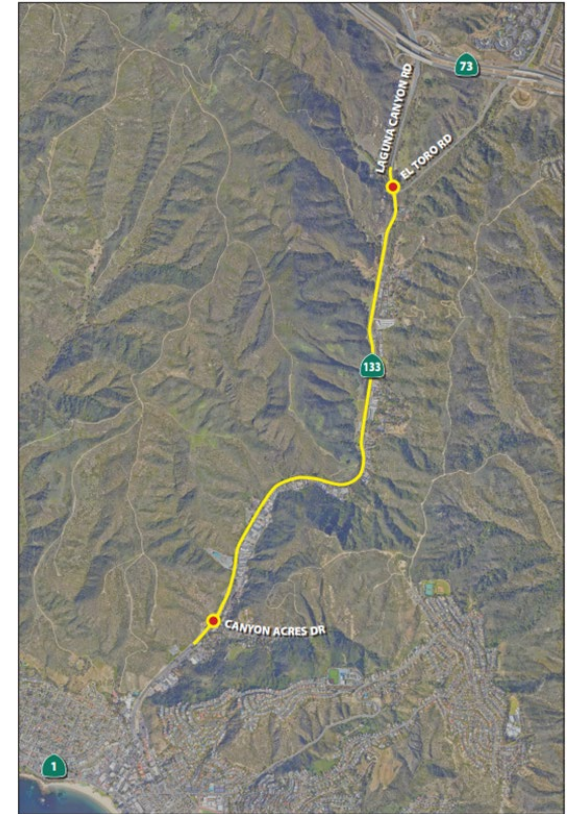
- Project Background & Overview
- Preliminary Ideas & Concepts
  - Presentation
  - Community breakout group discussions
  - Tabletop shares
- Closing Summary & Next Steps

# Project Background

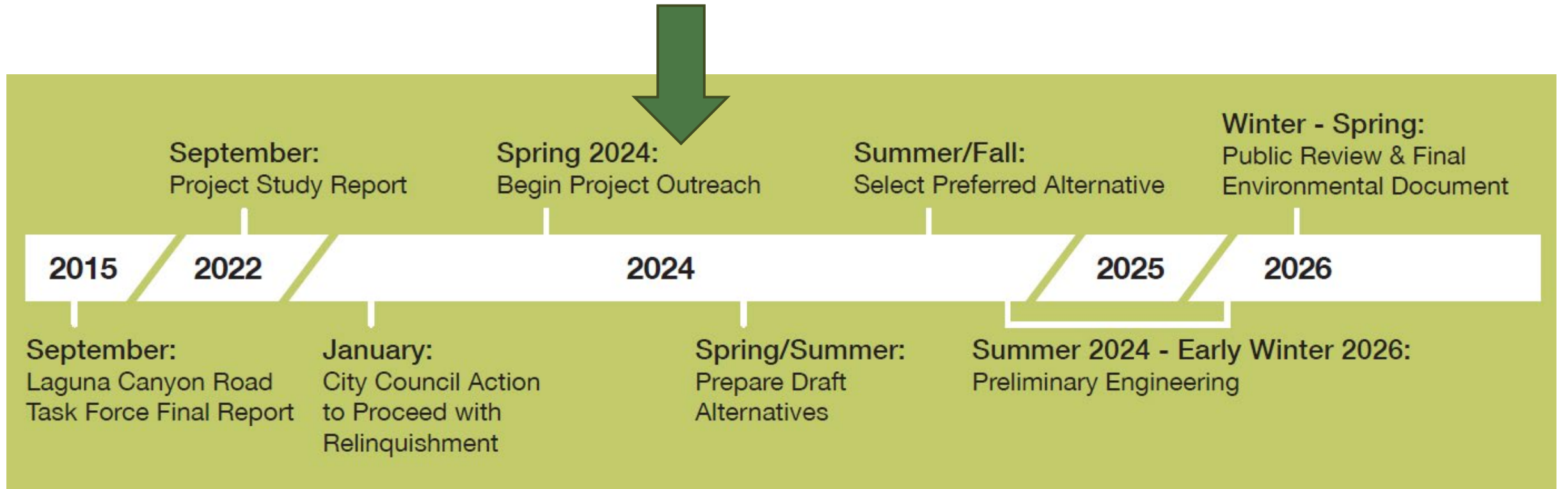


# Laguna Canyon Road

- Project area: El Toro Rd to Canyon Acres Dr (2.5 miles)
- Currently owned and operated by Caltrans
- Heavily used by pedestrians, cyclists, motorists, & transit riders
- Safety concerns have persisted for many years
- Primary evacuation route
- Important ecological, natural and recreational resources
- Gateway to the City of Laguna Beach

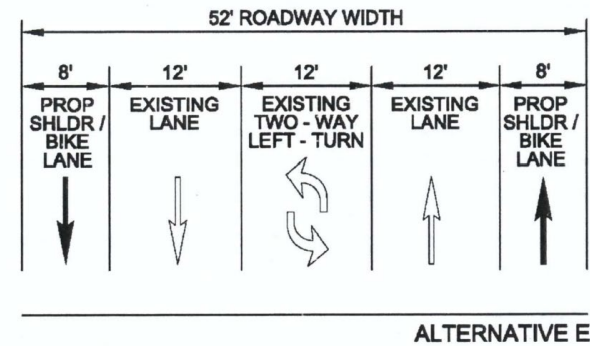
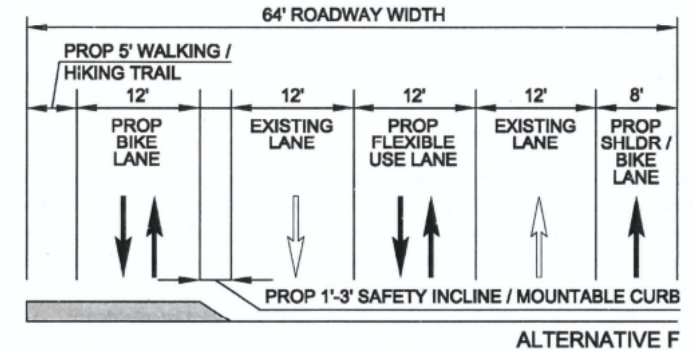


# Past & Present



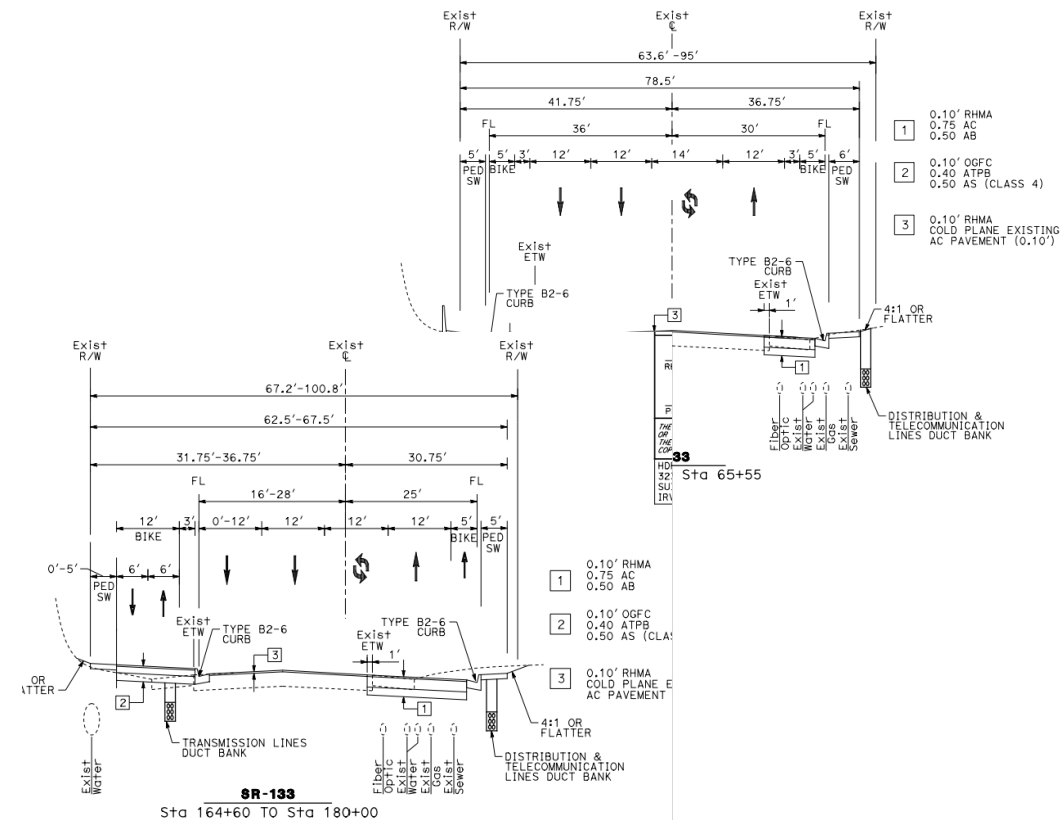
# 2014 - 2015 Task Force

- City Officials, residents, Caltrans, and other stakeholders (including conservation groups)
- Discussed and evaluated numerous alternatives
- Caltrans standards limit options
- Presented final report with several alternatives and analysis in 2015



# Project Study Report (PSR)

- Project Study Report (PSR) initiated in June 2017
- Yielded more detailed alternatives based on Caltrans design standards
- Cost-benefit analysis prepared in 2021
- PSR approved by Caltrans in 2022





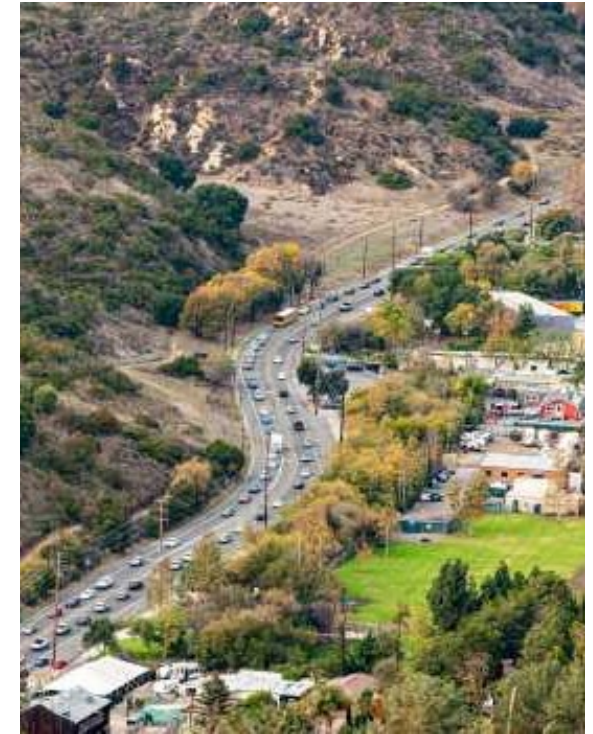
# “Protect & Connect”

- PAED (Project Approval & Environmental Documentation) phase initiated in May 2023
- Protect & Connect
- Relinquishment initiated in January 2024
  - *Opens door for LCR alternatives that align with 2015 Task Force recommendations*



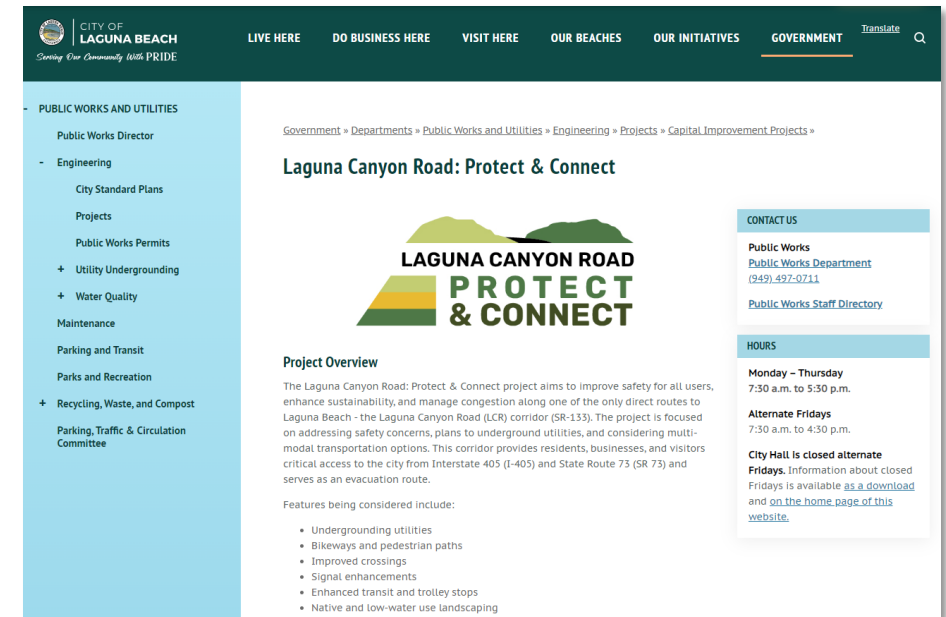
# “Protect & Connect” Goals

- Improve safety
  - Remove utility poles
  - Underground overhead lines
- Provide multi - modal improvements
  - Encourage use by pedestrians, transit users and bicyclists
- Develop solutions to improve traffic flow without adding roadway capacity
- Protect habitat and open space
- Minimize any impacts to private property



# Community Engagement

- Website
- Fact sheet
- Online survey
- Pop-ups
- Stakeholder meetings
- Door-to-door business outreach
- Community workshop



The screenshot shows the City of Laguna Beach website page for the "Laguna Canyon Road: Protect & Connect" project. The page features a dark green header with navigation links: LIVE HERE, DO BUSINESS HERE, VISIT HERE, OUR BEACHES, OUR INITIATIVES, and GOVERNMENT. A search bar and a "Translate" link are also present. The main content area includes a breadcrumb trail: Government » Departments » Public Works and Utilities » Engineering » Projects » Capital Improvement Projects ». The project title "Laguna Canyon Road: Protect & Connect" is prominently displayed with a logo featuring a stylized mountain range and the text "LAGUNA CANYON ROAD PROTECT & CONNECT". Below the title is a "Project Overview" section, followed by a "CONTACT US" section with links for Public Works, Public Works Department, and Public Works Staff Directory. A "HOURS" section lists the operating hours for Monday - Thursday (7:30 a.m. to 5:30 p.m.) and Alternate Fridays (7:30 a.m. to 4:30 p.m.), noting that City Hall is closed on alternate Fridays. A list of features being considered includes undergrounding utilities, bikeways and pedestrian paths, improved crossings, signal enhancements, enhanced transit and trolley stops, and native and low-water use landscaping.



# Community Survey Highlights

2,501 respondents (as of 5/7/2024)

*Do you use the corridor for your commute  
to/from work?*

Yes: **42%**

No: **57%**

I don't know: **less than 1%**

*Do you use the corridor for your commute  
to/from home?*

Yes: **67%**

No: **33%**

I don't know: **1%**

*Do you use the corridor for your commute  
to/from school?*

Yes: **9%**

No: **90%**

I don't know: **1%**

*Do you use the corridor to access **recreational  
activity**?*

Yes: **84%**

No: **16%**

I don't know: **less than 1%**

# Community Survey Highlights

*What is your primary mode of transportation when using the corridor?*

Car: **98%**  
Public transportation: **less than 1%**  
Bike: **1%**  
Walk: **less than 1%**  
Other: **1%**

*What is your secondary mode of transportation when using the corridor (if any)?*

Car: **43%**  
Public transportation: **5%**  
Bike: **12%**  
Walk: **16%**  
Other: **25%**

*How often do you use the corridor:*

Multiple times per day: **24%**  
Once per day: **8%**  
3-6 times per week: **33%**  
1-2 times per week: **19%**  
2-3 times per month: **11%**  
Once per month: **2%**  
Less than once per month: **2%**  
Never: **less than 1%**

*What are your key challenges when traveling along the corridor?*

Congestion: **87%**  
Pedestrian connectivity (getting around on foot): **12%**  
Bike facilities (getting around by bike): **14%**  
Access to transit and lack of amenities: **7%**  
Making left turns (to/from side streets, school, home, etc.): **35%**  
Other: **18%**

# Pop-ups & Stakeholder Meetings

## Stakeholder Meetings

- Environmental Agencies – April 17
- Visit Laguna Board – April 17
- Community Environmental Groups – April 17
- Bicycle Groups – May 1
- Coastal Greenbelt Authority – May 8
- Laguna Canyon Foundation – May 9

## Pop-up Events

- Laguna Beach Dog Park – April 16
- Willow Canyon Trail Head – April 21
- Downtown Transit Station – April 23
- Susi Q – April 24
- Laguna Beach Farmers Market – April 27
- Main Beach Park – May 4

**Door-to-Door Business Outreach** – April 25, April 30, May 1, May 6



**Reached 400+ individuals (as of May 4)**

# Preliminary Ideas & Concepts



# Undergrounding Utilities



*Before*



*After*



# Pedestrian & Bike Improvements

## Off-Street Bike Path with Sidewalk



## On-Street Bike Lanes with Sidewalk



For discussion purposes only

*Representing concepts from Task Force and PSR process*

# Off - Street Path Edge Treatments



Raised Island



Rolled Curb



Wood Railing – Can also be combined with options above

For discussion purposes only

# Rural/Natural Design Elements



**Textured/Colored Sidewalks**



**Concrete Rolled Curbs**



**Native Landscape and  
Decomposed Granite**

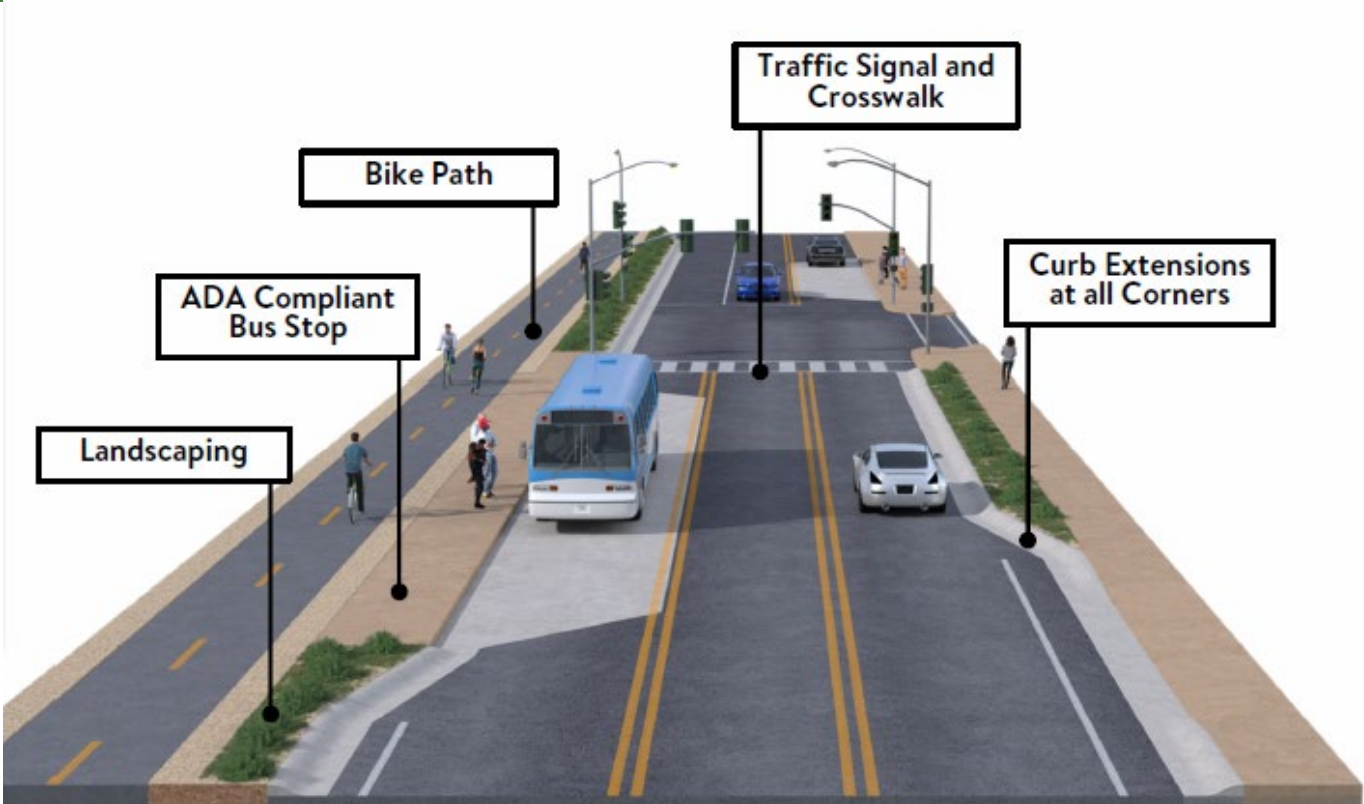


**Rustic Wood Railings**

# Supporting Local Transit & Access



Existing Laguna Canyon Road Transit/Bus Stops



Transit/Bus Stop with Traffic Signal and Crosswalk

For discussion purposes only



# Introducing Traffic Calming



**Raised Median Islands**



**Narrowed Lanes and Markings**  
*(Temple Hills Dr, Laguna Beach)*



**Curb Extensions**

# Tabletop Exercise



# Breakout Group Guidelines

- Strive to create a **problem -solving** environment;
- Use common conversational **courtesy** ;
- **All ideas and points of view** have unique value;
- Strive to be **concise** ;
- **Avoid ascribing motives** for the opinions expressed by others;
- Provide **equal opportunities** for participation;
- **Avoid adopting right -wrong** paradigms.

# Tabletop Breakout Discussions

- 1 Introduce yourselves (if needed!). Select a Recorder and a Presenter.
- 2 Discuss informally the preliminary ideas & concepts. Invite Project Team over to answer questions.
- 3 Complete one worksheet per table – collaboratively.
  - *Make note of dissenting opinions as necessary*
  - *Use additional sheet for other concerns & ideas*
- 4 Each table will share key takeaways from the discussion and worksheet.





# Closing Summary



# Next Steps



# Next Steps

- Alternative Development:  
May- June
- Engagement – Alternatives in  
July/August



*Credit: Daily Pilot*



**THANK YOU!**