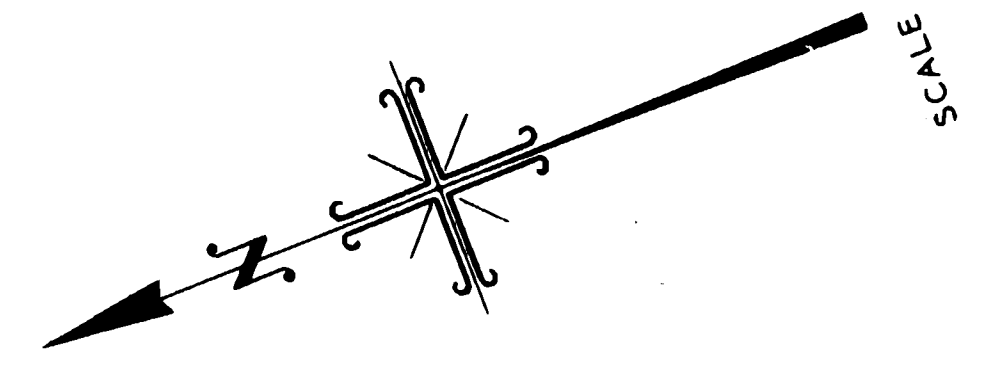
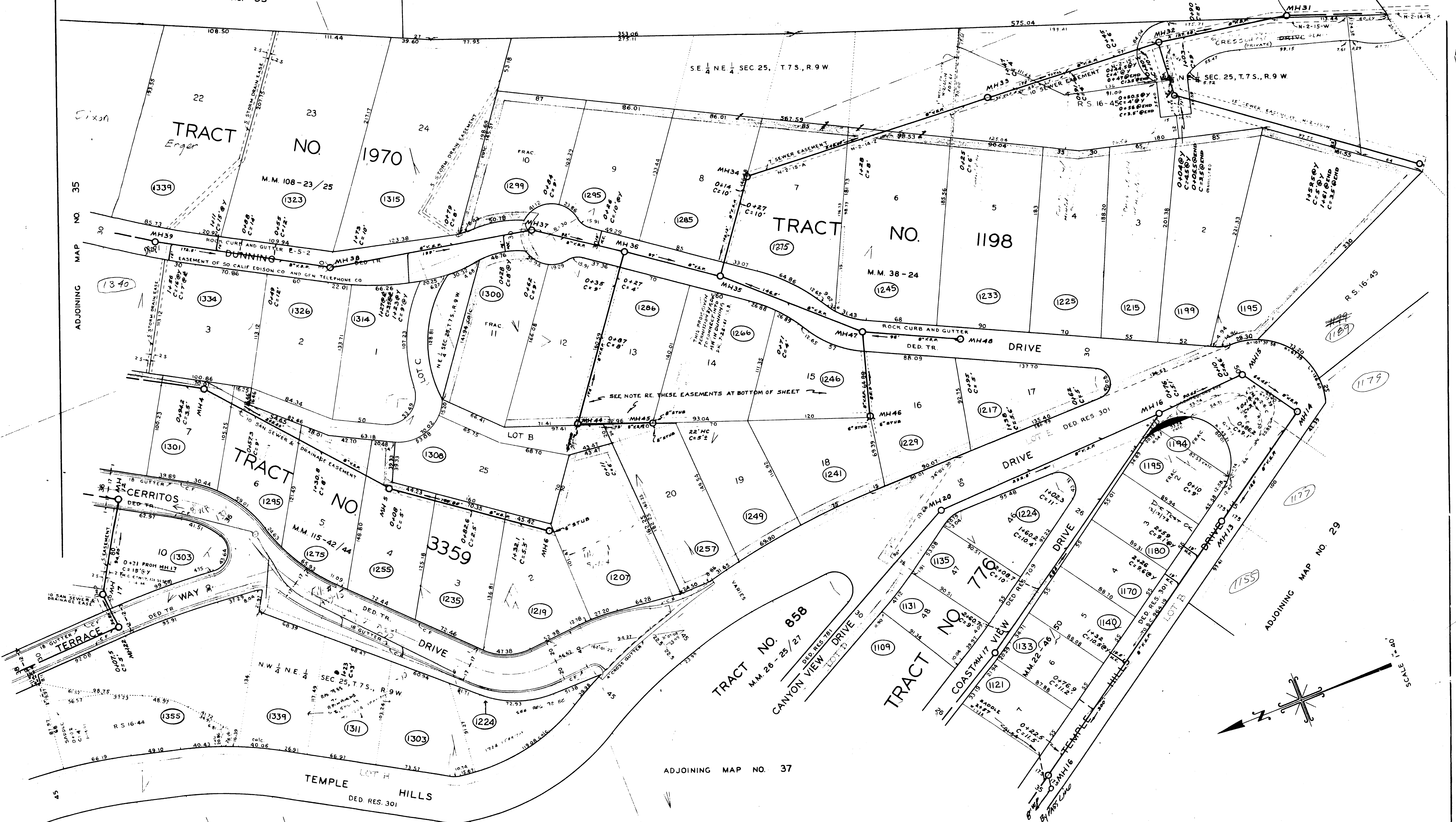


SE 1/4 NE 1/4 SEC 25, T.7S., R.9W



ADJOINING MAP NO. 37

see page #31

REVISIONS			
DATE	DESCRIPTION	CHECKED	APPROVED

TRACTS NO. 1198 AND 1970 DEDICATE EASEMENTS, FOR SANITARY SEWERS AND PUBLIC UTILITIES PURPOSES, 5 FEET WIDE, 2.5 FEET ON EITHER SIDE OF LINES BETWEEN LOTS AND 5 FEET WIDE ALONG THE BACK LINES OF LOTS.

TRACT NO. 3359 DEDICATES EASEMENTS, FOR SANITARY SEWER AND DRAINAGE PURPOSES, 2.5 FEET WIDE LYING ALONG THE SIDE LINES OF EACH LOT.

APPROVED 9-4-59 DATE

CITY OF LAGUNA BEACH, CALIFORNIA
 DEPARTMENT OF PUBLIC WORKS - ENGINEERING DIVISION
 PAUL V. HENNESSY CITY ENGINEER

DISTRICT MAP
SEWERS

DRAWN BY V. AZNAK	CHECKED BY B.C. INGRAM	SUPERVISED BY B.C. INGRAM	DRAWING AND FILE NO. S 36
----------------------	---------------------------	------------------------------	------------------------------