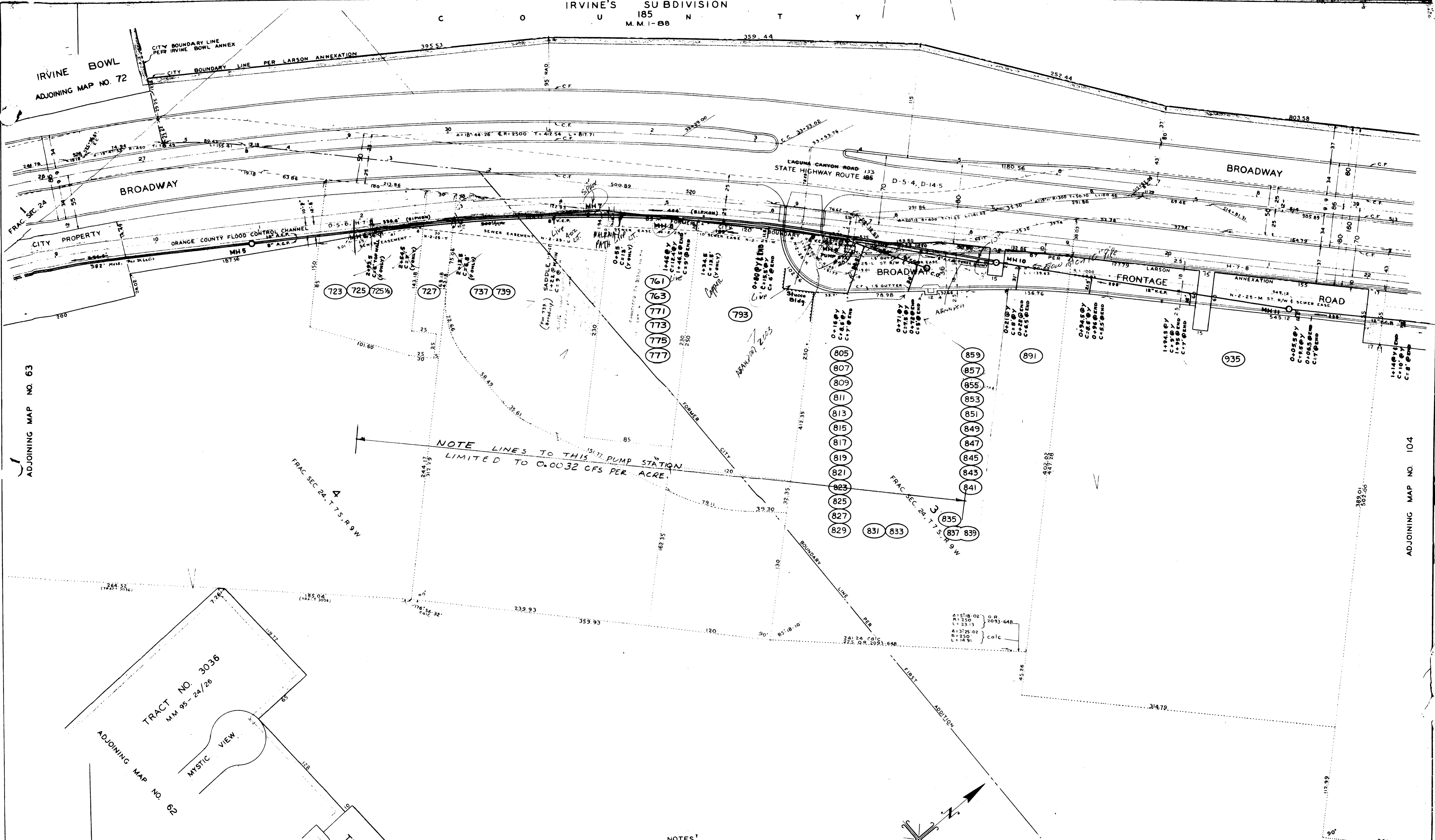


IRVINE'S SUBDIVISION
185
M.M. 1-88

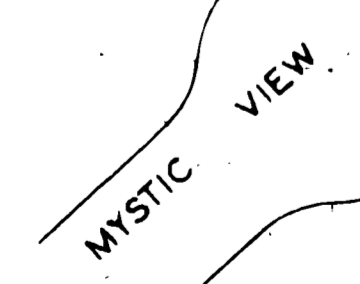


ADJOINING MAP NO. 63

ADJOINING MAP NO. 104

NOTE LINES TO THIS PUMP STATION LIMITED TO 0.0032 CFS PER ACRE.

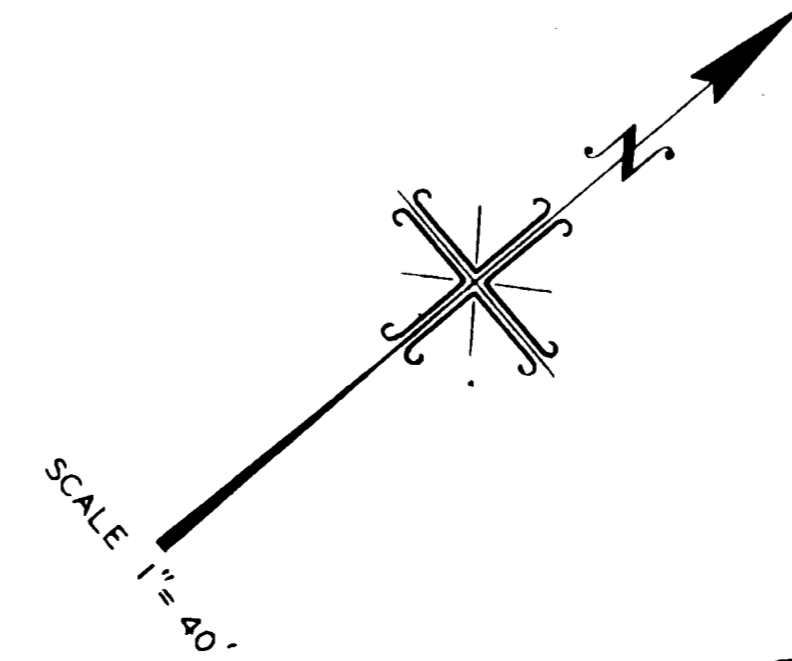
TRACT NO. 3036
M.M. 95-24/26



TRACT NO. 2904
M.M. 117-18/20

REVISIONS				
DATE	DESCRIPTION	BY	CHECKED	APPROVED
3-64	ADDED BROADWAY FRONTAGE RD	GCB		

NOTES:
STATIONING ON STATE HIGHWAY R/W IS PER R/W PLAN VII-ORA-185-LGN B. A. FILE NO D-14-5 & D-5-4 IN THE OFFICE OF THE CITY ENGINEER.
STATIONING ON OLD LAGUNA CANYON ROAD IS PER ORANGE COUNTY ROAD DEPT PLAN OF NOV 4, 1929, ON FILE IN THE OFFICE OF THE CITY ENGINEER.
STATIONING ON O.C.F.C. CHANNEL IS PER FLOOD CONTROL DEPT PLANS E-82-3 & H-101-8-A, FILE NO D-5-6 & H-7-8 IN THE OFFICE OF THE CITY ENGINEER.



ADJOINING MAP NO. 108

TRaverse Book 2, Pages 81 to 90

CITY OF LAGUNA BEACH, CALIFORNIA
DEPARTMENT OF PUBLIC WORKS — ENGINEERING DIVISION
GEORGE DE CHELLIS — CITY ENGINEER

DISTRICT MAP
SEWERS

73

APPROVED _____ DATE _____

DRAWN BY: VAZNAK
CHECKED BY: B. INGRAM
SUPERVISED BY: _____
DRAWING AND FILE NO. _____