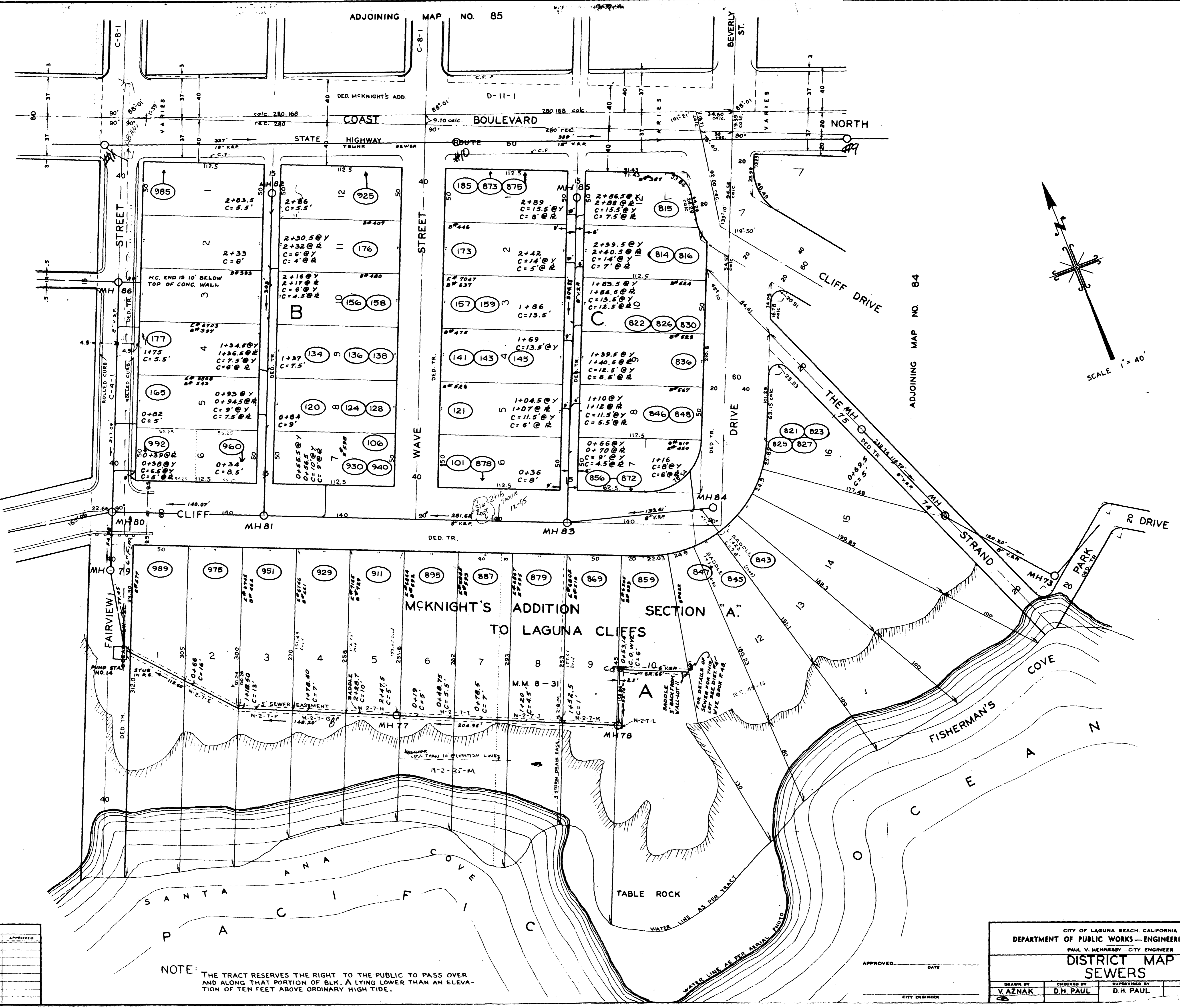


ADJOINING MAP NO. 92

ADJOINING MAP NO. 93



REVISIONS				
DATE	DESCRIPTION	BY	CHECKED	APPROVED

NOTE: THE TRACT RESERVES THE RIGHT TO THE PUBLIC TO PASS OVER AND ALONG THAT PORTION OF BLK. A LYING LOWER THAN AN ELEVATION OF TEN FEET ABOVE ORDINARY HIGH TIDE.

APPROVED: _____ DATE _____

CITY OF LAGUNA BEACH, CALIFORNIA
 DEPARTMENT OF PUBLIC WORKS—ENGINEERING DIVISION
 PAUL V. HENNESSY—CITY ENGINEER
**DISTRICT MAP
 SEWERS**

DRAWN BY V. AZNAK	CHECKED BY D.H. PAUL	SUPERVISED BY D.H. PAUL	DRAWING AND FILE NO. 5 91
----------------------	-------------------------	----------------------------	------------------------------