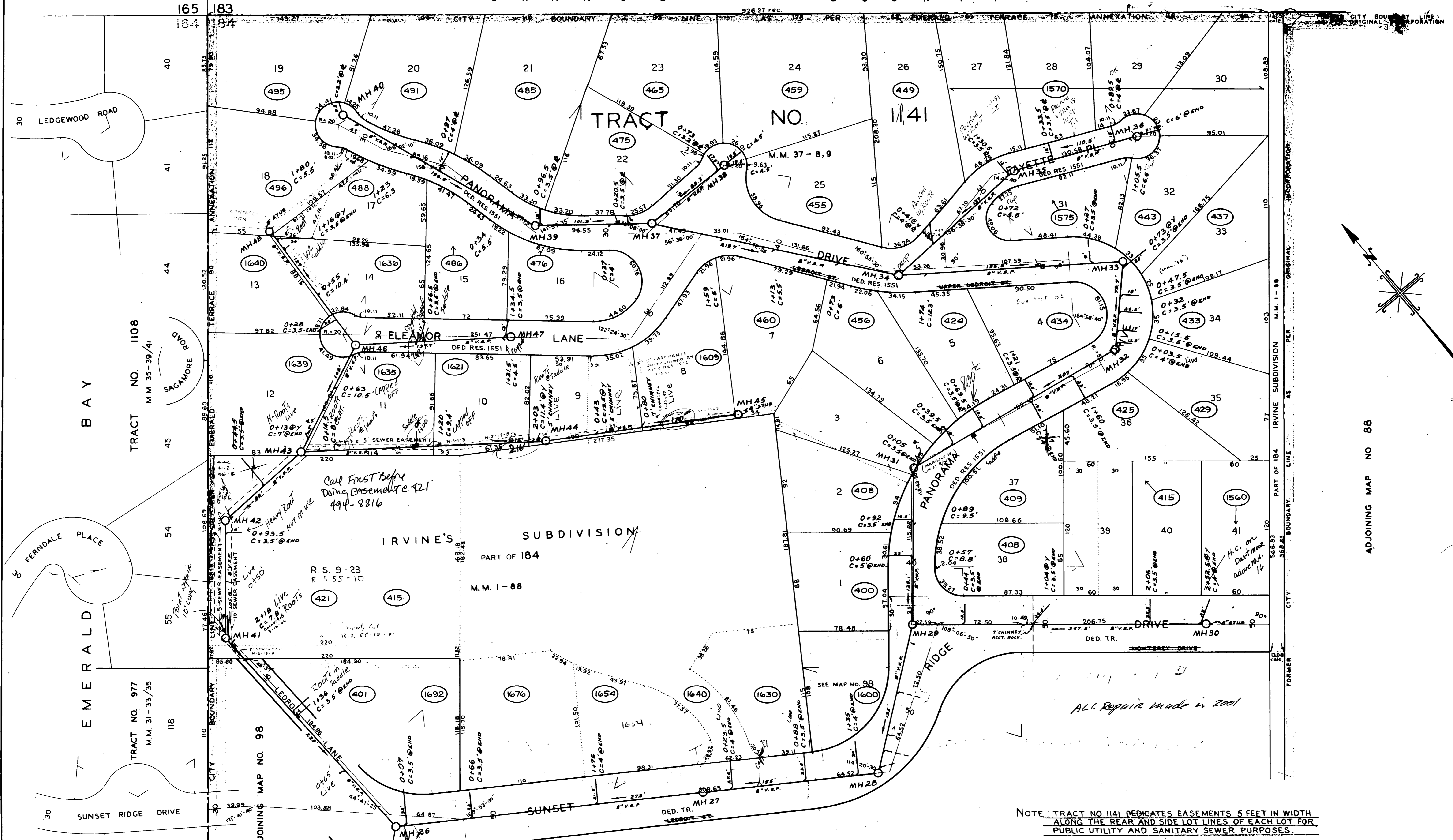


IRVINE'S SUBDIVISION
183
M.M. 1-88

O R A N G E C O U N T Y



Call First before
Digging Beneath R21
494-8816

ALL Repairs made in 2001

NOTE: TRACT NO. 1141 DEDICATES EASEMENTS 5 FEET IN WIDTH
ALONG THE REAR AND SIDE LOT LINES OF EACH LOT FOR
PUBLIC UTILITY AND SANITARY SEWER PURPOSES.

total 3,077.5

REVISIONS				
DATE	DESCRIPTION	BY	CHECKED	APPROVED

ADJOINING MAP NO. 98

APPROVED AUG. 4, 1988
DATE

CITY OF LAGUNA BEACH, CALIFORNIA
DEPARTMENT OF PUBLIC WORKS—ENGINEERING DIVISION
CRAIG G. LELAND—CITY ENGINEER

**DISTRICT MAP
SEWERS**

DRAWN BY V. AZNAR	CHECKED BY D. H. PAUL	SUPERVISED BY D. H. PAUL	DRAWING NO. S
----------------------	--------------------------	-----------------------------	------------------