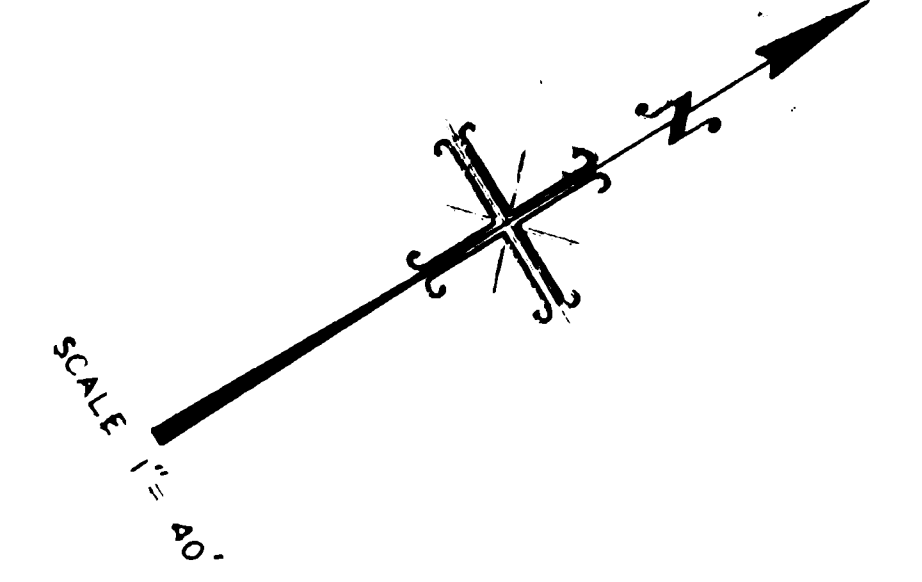


IRVINE'S SUBDIVISION

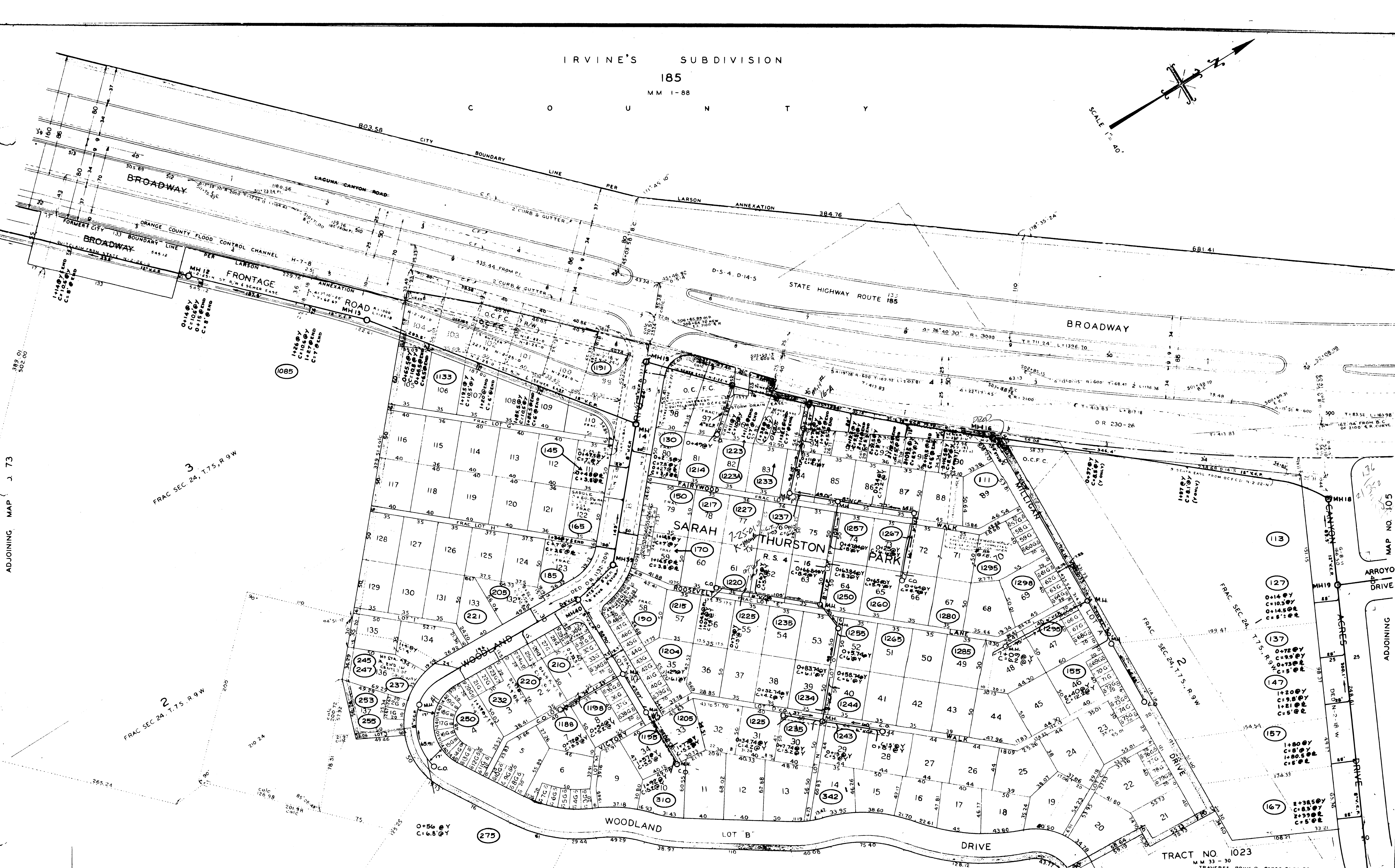
185

MM 1-88

C O U N T Y



ADJOINING MAP J. 73



3
FRAC SEC 24, T.7S, R.9W

2
FRAC SEC 24, T.7S, R.9W

REVISIONS				
DATE	DESCRIPTION	BY	CHECKED	APPROVED
3.64	ADDED BROADWAY FRONTAGE ROAD	G.C.P.		

NOTES
 STATIONING ON STATE HIGHWAY R/W IS PER R/W PLAN VII-ORA-185-LGN.B:A,
 FILE NO D-14-5 & D-5-4 IN THE OFFICE OF THE CITY ENGINEER.
 STATIONING ON OLD LAGUNA CANYON ROAD IS PER ORANGE COUNTY ROAD DEPT PLAN
 OF NOV. 4, 1929, ON FILE IN THE OFFICE OF THE CITY ENGINEER.
 STATIONING ON O.C.F.C. CHANNEL IS PER FLOOD CONTROL DEPT PLANS E-82-3 & 11-101-8-A,
 FILE NO D-5-8 & H-7-8 IN THE OFFICE OF THE CITY ENGINEER.

APPROVED _____ DATE _____
 CITY ENGINEER

TRACT NO. 1023
 M.M. 33-30
 TRAVERSE BOOK 2-PAGES 81 TO 90

CITY OF LAGUNA BEACH, CALIFORNIA
 DEPARTMENT OF PUBLIC WORKS—ENGINEERING DIVISION
 GEORGE DE CHELLIS—CITY ENGINEER

DISTRICT MAP
SEWERS

DRAWN BY: V. AZNAK
 CHECKED BY: B. C. INGRAM
 SUPERVISED BY: S. 104

ADJOINING MAP NO. III

ADJOINING MAP NO. 109