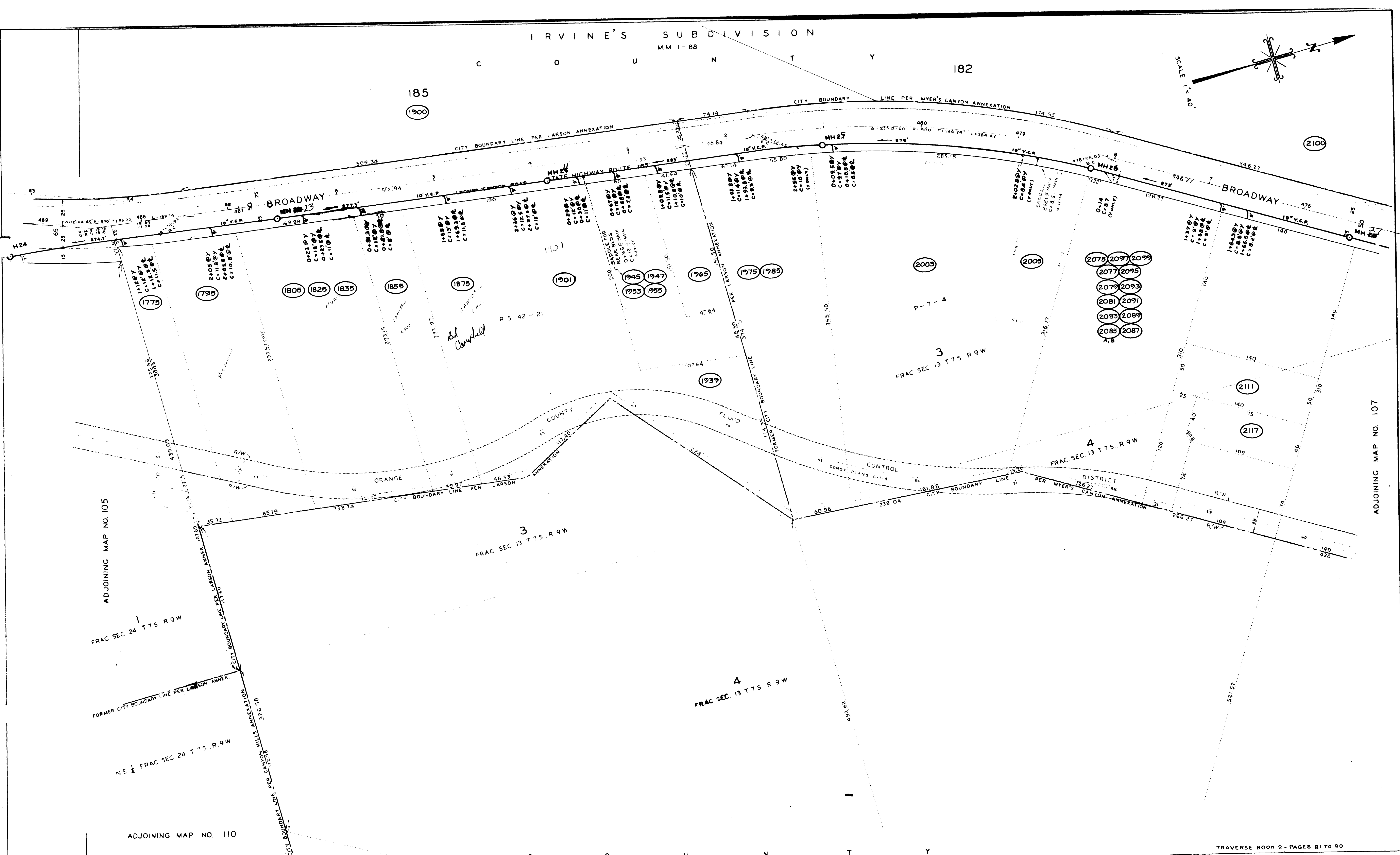
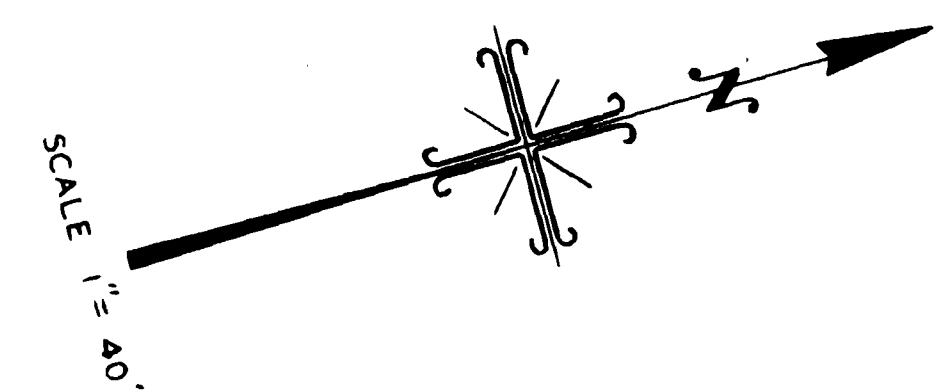


IRVINE'S SUBDIVISION

MM 1-88

C O U N T Y 182



REVISIONS				
DATE	DESCRIPTION	BY	CHECKED	APPROVED

NOTES
 STATIONING ON STATE HIGHWAY R/W IS PER R/W PLAN VII-ORA-185-LGN B A
 FILE NO D-14-5 & D-5-A IN THE OFFICE OF THE CITY ENGINEER
 STATIONING ON OLD LAGUNA CANYON ROAD IS PER ORANGE COUNTY ROAD DEPT.
 PLAN OF NOV 4 1929 ON FILE IN THE OFFICE OF THE CITY ENGINEER.

APPROVED _____ DATE _____
 CITY ENGINEER

TRAVERSE BOOK 2 - PAGES 81 TO 90

CITY OF LAGUNA BEACH, CALIFORNIA
 DEPARTMENT OF PUBLIC WORKS - ENGINEERING DIVISION
 GEORGE DE CHELLIS-CITY ENGINEER

DISTRICT MAP SEWERS

DRAWN BY	CHECKED BY	SUPERVISED BY	DRAWING AND FILE NO.
V AZNAK		B C INGRAM	5 106