

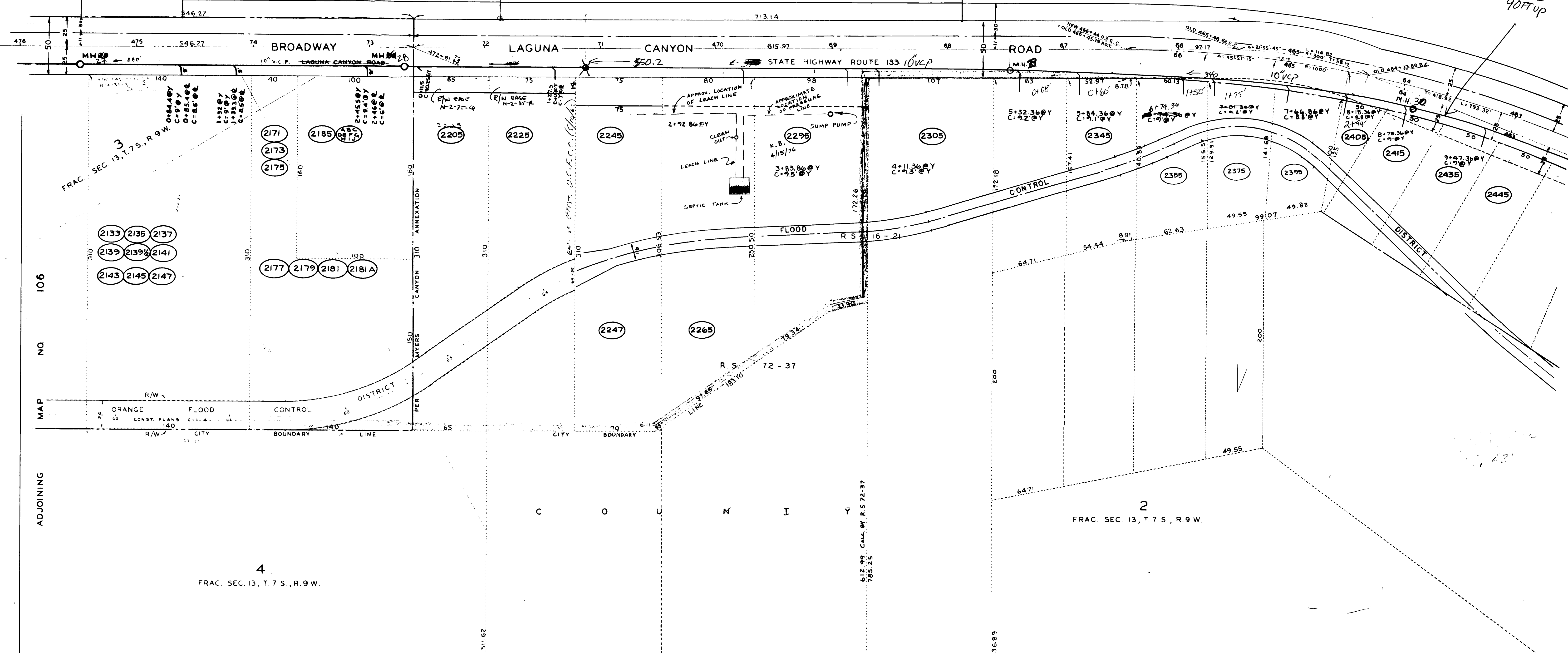
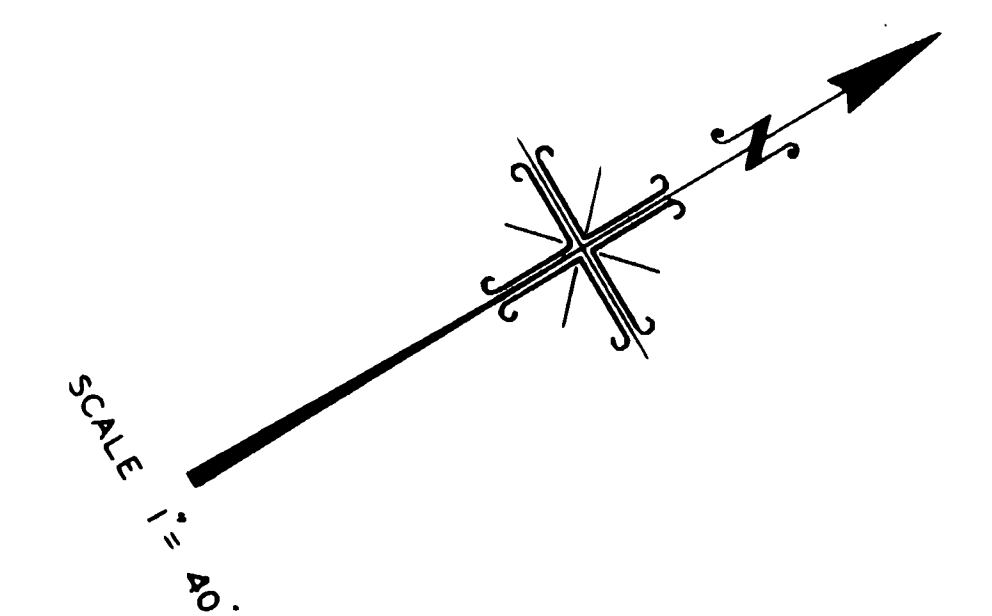
IRVINE'S SUBDIVISION

182

M.M. 1-88

C O U N T Y

SCHEM. OF ART



ADJOINING
MAP NO. 106

MAP NO. 106

ADJOINING
MAP NO. 106

4
FRAC. SEC. 13, T. 7 S., R. 9 W.

2
FRAC. SEC. 13, T. 7 S., R. 9 W.

NOTE
STATIONING ON OLD LAGUNA CANYON ROAD IS PER ORANGE COUNTY ROAD DEPT
PLAN OF NOV. 4, 1929 ON FILE IN THE OFFICE OF THE CITY ENGINEER.

APPROVED _____ DATE _____

REVISIONS				
DATE	DESCRIPTION	BY	CHECKED	APPROVED

TRaverse Book 2 - Pages 81 to 90

CITY OF LAGUNA BEACH, CALIFORNIA
DEPARTMENT OF PUBLIC WORKS - ENGINEERING DIVISION
GEORGE DE CHELLIS-CITY ENGINEER

**DISTRICT MAP
SEWERS**

DRAWN BY V. AZNAK	CHECKED BY	SUPERVISED BY B. C. INGRAM	DRAWING AND FILE NO. S 107
----------------------	------------	-------------------------------	-------------------------------