

ADJOINING MAP NO. 113

SW 1/4 SE 1/4 SEC 24, T.7S, R.9W

NW 1/4 SE 1/4 SEC 24, T.7S, R.9W

R.S. 46-47

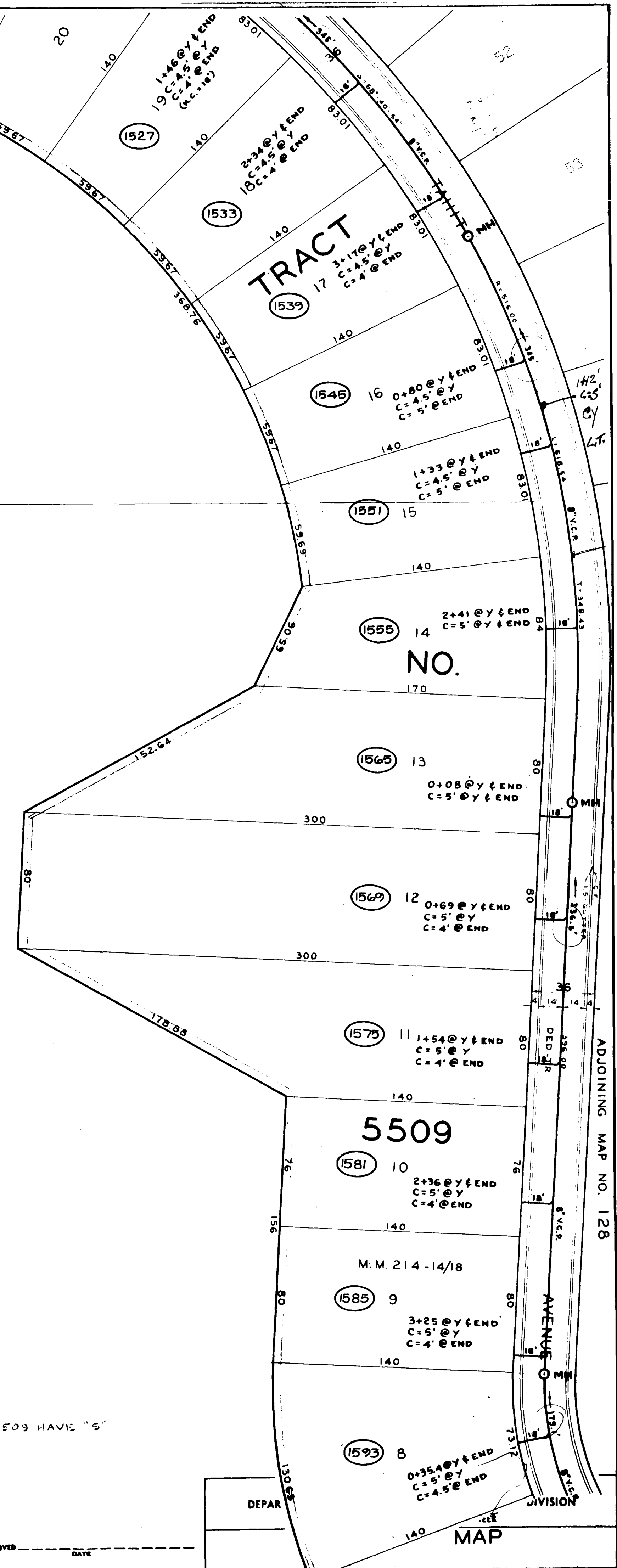
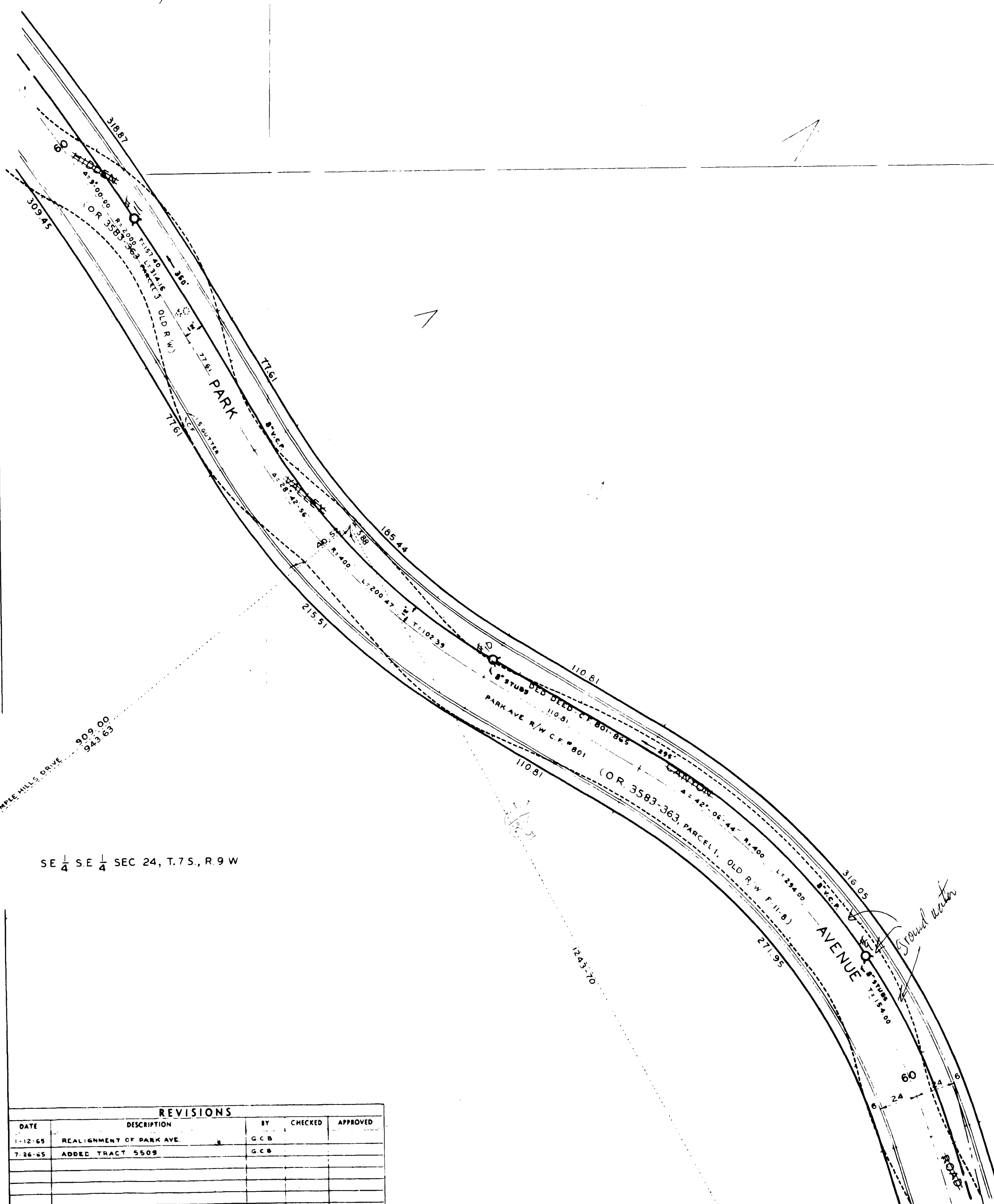
NE 1/4 SE 1/4 SEC 24, T.7S, R.9W

SE 1/4 SE 1/4 SEC 24, T.7S, R.9W

FORMER CITY BOUNDARY LINE
AS PER EMPL. HILLS ANNEX

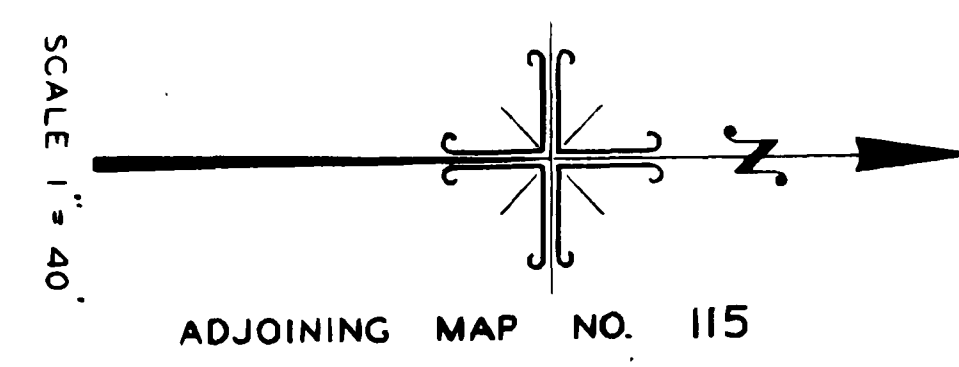
ADJOINING MAP NO. 45

ADJOINING MAP NO. 128



REVISIONS				
DATE	DESCRIPTION	BY	CHECKED	APPROVED
1-12-65	REALIGNMENT OF PARK AVE.	G.C.B.		
7-26-65	ADDED TRACT 5509	G.C.B.		

NOTE:
LOTS IN TRACTS 4623 & 5509 HAVE "S"
IN CURB AT LATERALS



ADJOINING MAP NO. 115

APPROVED _____ DATE _____

DRAWN BY: V. AZNAK
 SUPERVISED BY: B.C. INGRAM
 CITY ENGINEER: B.C. INGRAM
 DRAWING AND FILE NO.: S 114