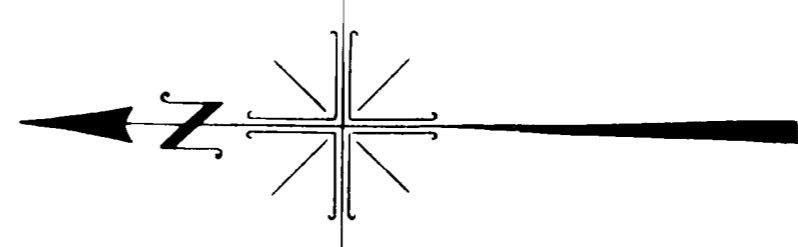


ADJOINING MAP NO. 128

NOTE:
SEWER WYES IN TRACT 6721 ARE 6"x4"
ALL LATERALS ARE 4" V.C.P. "S" STAMPED
IN CURBS AT LATERAL LOCATIONS.
NO DRIVEWAY ACCESS PERMITTED FROM
THESE LOTS TO SHALAND DR.
NLY SIDE OF CARIBBEAN WAY

NE 1/4 FRAC. SEC. 24, T. 7 S., R. 9 W.

NOTE:
LOTS IN TR 4623 HAVE "S" IN CURB AT LATERALS.
ALSO TR 5509

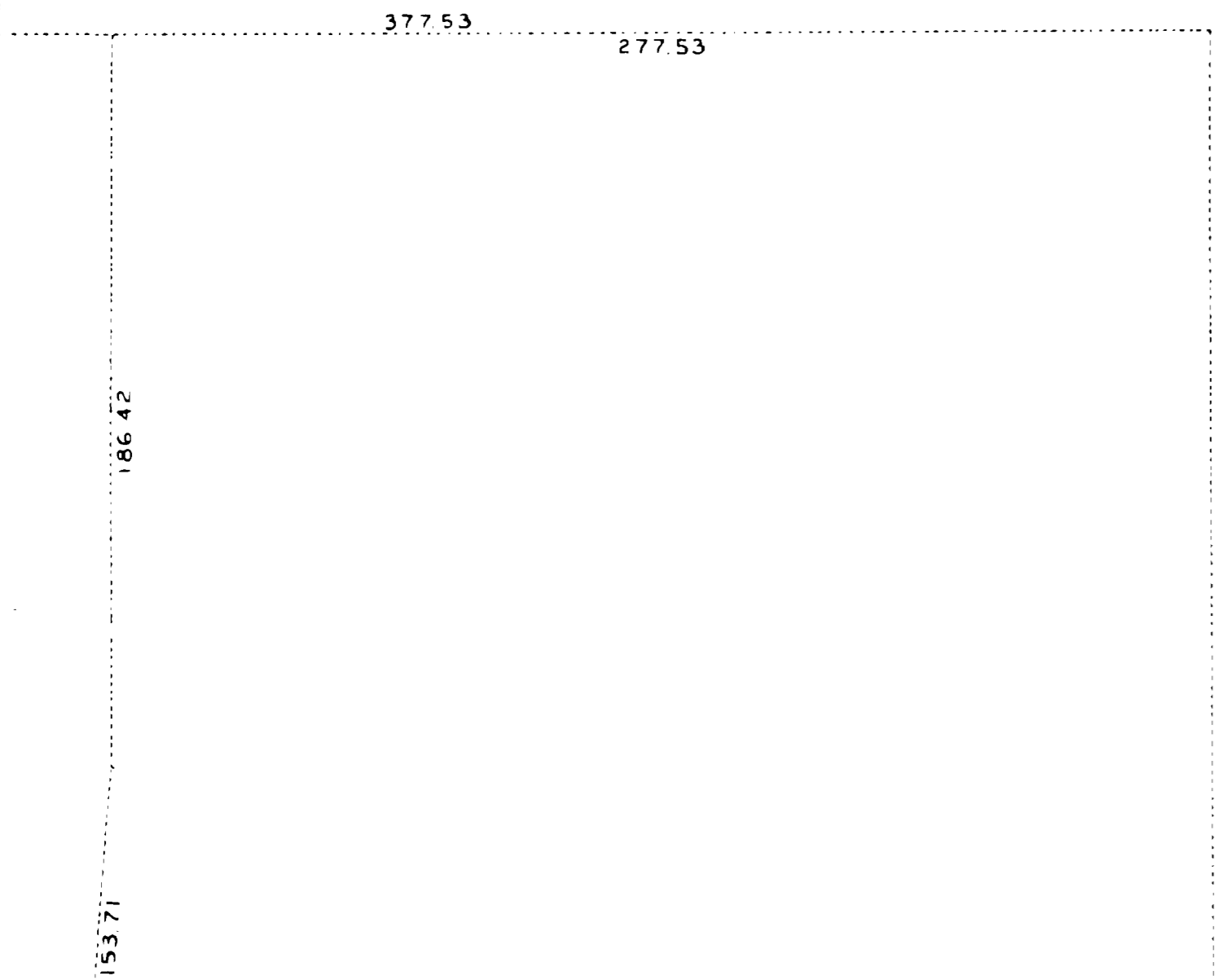


SCALE 1" = 40'

ADJOINING MAP NO. 145

ADJOINING MAP NO. 114

ADJOINING MAP NO. 113



REVISIONS				
DATE	DESCRIPTION	BY	CHECKED	APPROVED
7-30-65	ADDED TRACT 5509	G.C.B.		

CITY OF LAGUNA BEACH, CALIFORNIA DEPARTMENT OF PUBLIC WORKS — ENGINEERING DIVISION DONALD R. ROOKE — CITY ENGINEER			
DISTRICT MAP			
DRAWN BY G.C. BRADLEY	CHECKED BY 	SUPERVISED BY B.C. INGRAM	DRAWING AND FILE NO. 5 127

APPROVED _____ DATE _____
CITY ENGINEER

ADJOINING MAP NO. 112