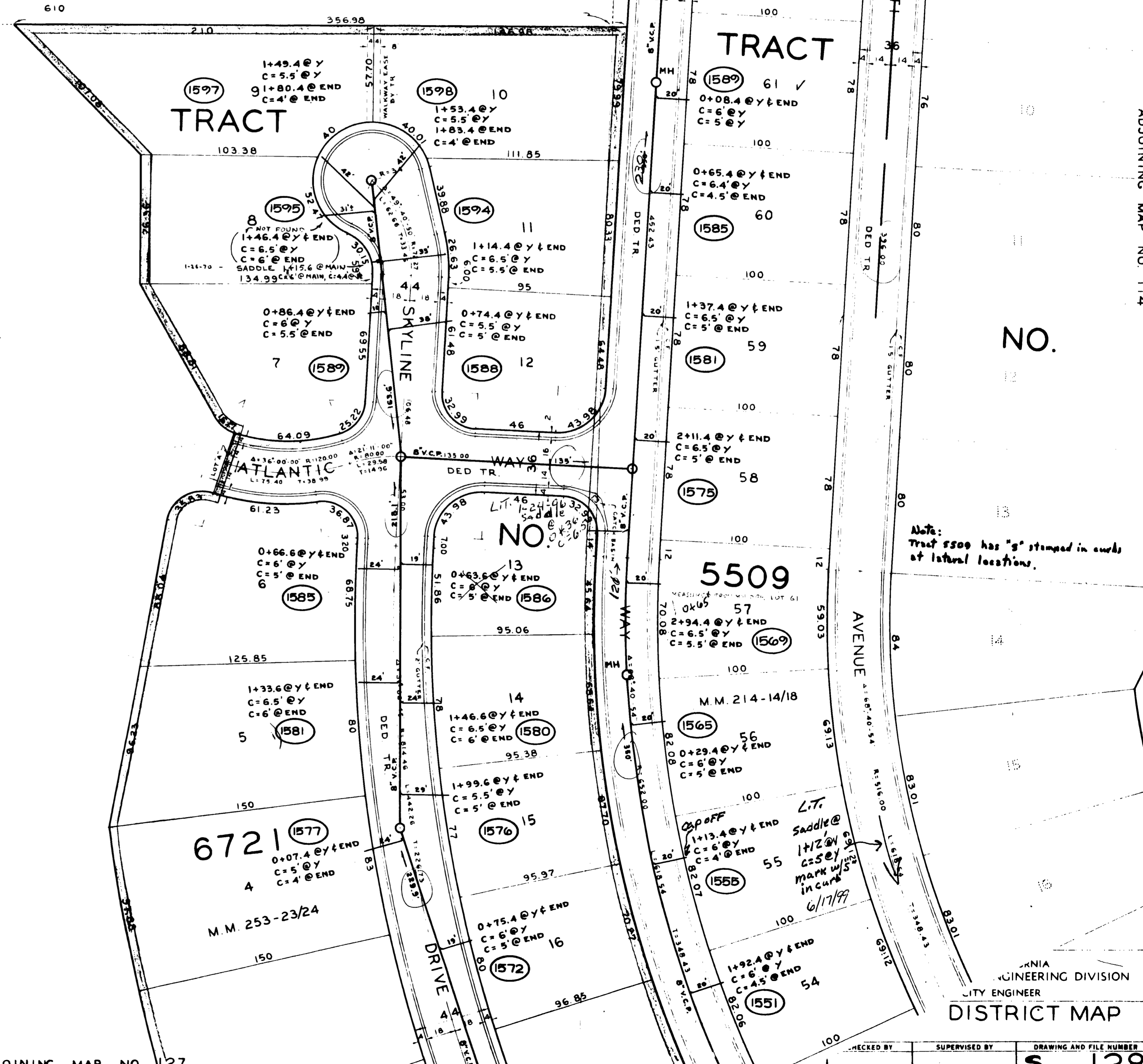


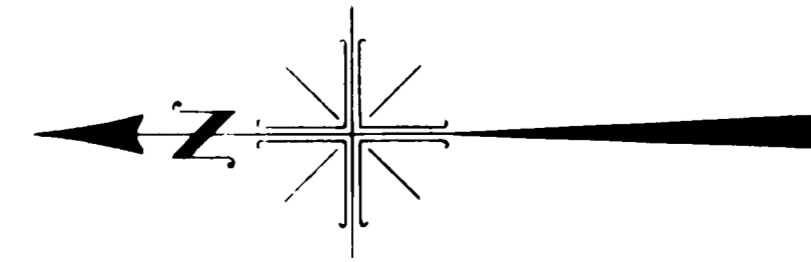
LAGUNA BEACH UNIFIED SCHOOL DISTRICT
THURSTON INTERMEDIATE SCHOOL

NE 1/4 FRAC. SEC. 24, T.7S., R.9W.



NOTE:
TRACT 6721 SPECIFIES: "ALL VEHICULAR ACCESS RIGHTS TO ATLANTIC WAY AND CARIBBEAN WAY EXCEPT STREET INTERSECTIONS ARE DEDICATED TO THE CITY OF LAGUNA BEACH."
MEANING:
NO DRIVEWAY ACCESSES FROM ATLANTIC WAY OR NORTHERLY SIDE OF CARIBBEAN WAY.
SEWER WYES IN TRACT 6721 ARE 8" DIA. ALL LATERALS ARE 4" V.C.P. "S" STAMPED IN CURBS AT LATERAL LOCATIONS.

SCALE 1" = 40'



ADJOINING MAP NO 146,

ADJOINING MAP NO. 114

NO.

Note:
Tract 5509 has "S" stamped in curbs at internal locations.

REVISIONS				
DATE	DESCRIPTION	BY	CHKD	APPROVED
4-10-69	ADDED TRACT 6721	G.C.B.		

CALIFORNIA
ENGINEERING DIVISION
CITY ENGINEER
DISTRICT MAP