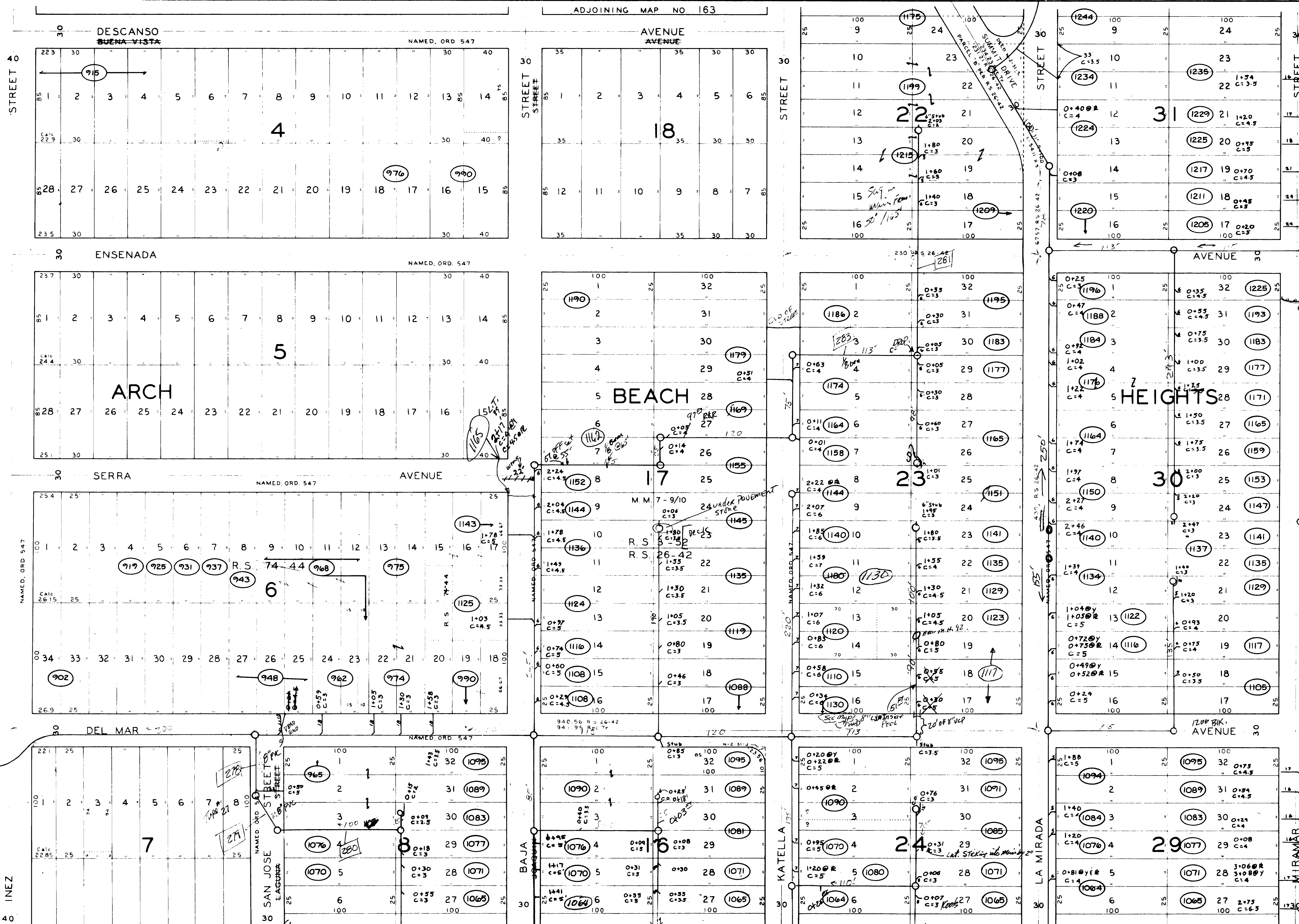


ADJOINING MAP NO. 13
 FORMER CITY BOUNDARY LINE PER FIRST ADDITION
 2604 95 R.S. 26-42
 2604 66 R.S. 3-52
 2603 5 REC. TR.
 NE CORNER SE 1/4 of SE 1/4, Sec 25
 17328 R.S. 26-42



DATE	DESCRIPTION	BY	CHECKED	APPROVED

All SD stakes are by Morris Testis

NOTE: PORTIONS OF CERTAIN STREETS IN ARCH BEACH HEIGHTS WERE DEDICATED TO CITY BY RES. NO. 66, 107, (N. 2-30-P)

CITY OF LAGUNA BEACH, CALIFORNIA
 DEPARTMENT OF PUBLIC WORKS—ENGINEERING DIVISION
 DONALD R. ROOKE—CITY ENGINEER

DISTRICT MAP

DRAWN BY G. C. BRADLEY	CHECKED BY	SUPERVISED BY B. C. INGRAM	DRAWING AND PMS NUMBER 164
---------------------------	------------	-------------------------------	-------------------------------