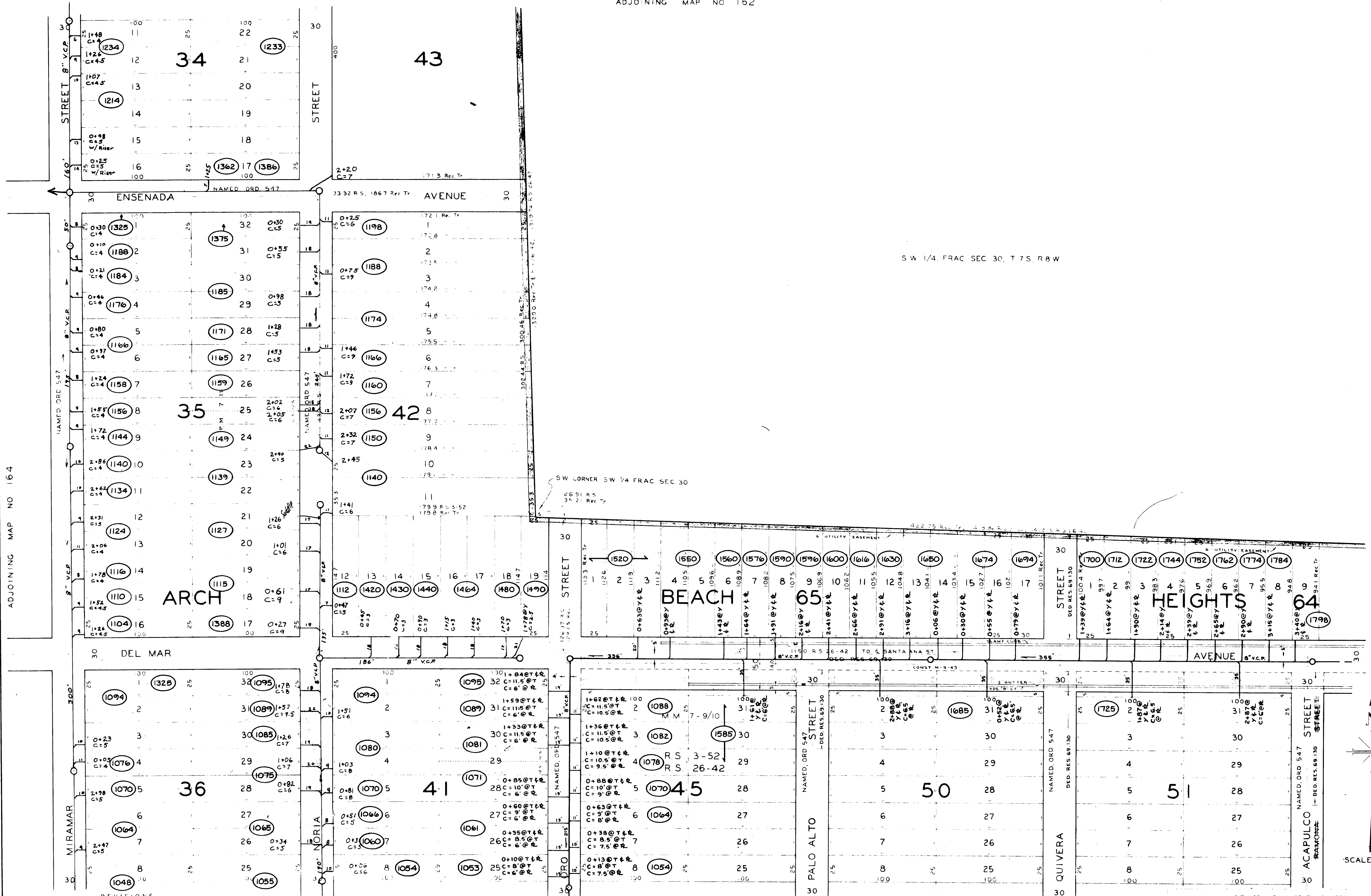


ADJOINING MAP NO 164

ADJOINING MAP NO 166



S W 1/4, FRAC SEC 30, T 7 S, R 8 W

SW CORNER SW 1/4 FRAC SEC. 30

NOTE: PARTS OF CERTAIN STREETS IN ARCH BEACH HEIGHTS WERE DEDICATED TO CITY BY RES. NO. 66 107 (N. 2 33 P)

APPROVED

CITY OF LAGUNA BEACH, CALIFORNIA
DEPARTMENT OF PUBLIC WORKS - ENGINEERING DIVISION
DONALD R. ROOKE - CITY ENGINEER

DISTRICT MAP