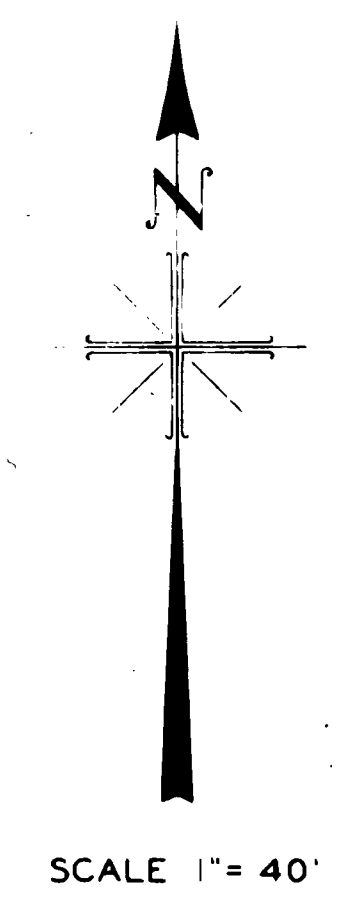
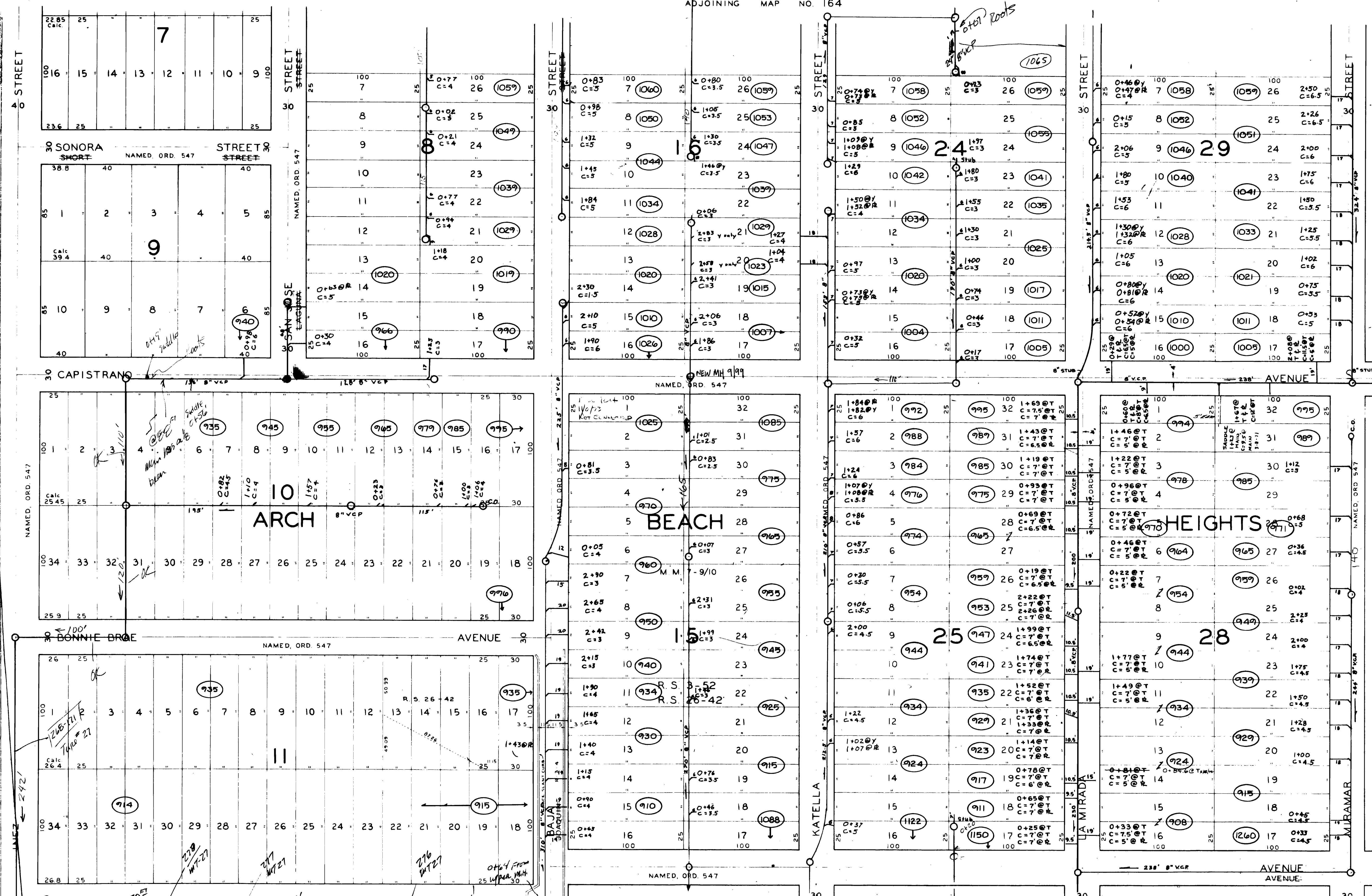


260495 RS 2642
260335 REC 7-52

ADJOINING MAP NO 12
FORMER CITY BOUNDARY LINE PER FIRST ADDITION



NOTE:
PORTIONS OF CERTAIN STREETS IN ARCH BEACH HEIGHTS
WERE DEDICATED TO CITY BY RES. NO 66.107 (N-2-20-P)

REVISIONS				
DATE	DESCRIPTION	BY	CHECKED	APPROVED
5-21-52	BAJA ST			

APPROVED DATE

CITY OF LAGUNA BEACH, CALIFORNIA
DEPARTMENT OF PUBLIC WORKS—ENGINEERING DIVISION
DONALD R. ROOKE—CITY ENGINEER

DISTRICT MAP

DRAWN BY G.C. BRADLEY	CHECKED BY	SUPERVISED BY B.C. INGRAM	DRAWING AND FILE NUMBER S 171
--------------------------	------------	------------------------------	----------------------------------